

**RETAIL
PRODUCT
CATALOG**

An Air of Excellence in :

- High Velocity Air Movement
- Misting Fans
- Industrial Ceiling Fans
- Roof and Attic Ventilation
- Bath Ventilation
- Heating Solutions

www.bvc.com



Our complete line of ventilation products for commercial, industrial, agricultural, and residential use are sold under these fine names:



TABLE OF CONTENTS

MAXXAIR PRO 6

Portable Air Circulators	6
Fan Accessories	7

MAXXAIR PRO FLEX 8

Flex Barrel Fans	8
------------------	---

MAXXAIR 9

Portable Air Circulators	9
Floor Fans	10
Wet/Dry Vacuums	11
Pedestal Fans	12
Desk Fans	13
Wall Mount Fans	13
Floor Drying Fans	14
Confined Space Ventilators	14
Commercial Dehumidifiers	14
Exhaust Fans	15
Media Air Cleaners	15
Evaporative Coolers	16

COOL DRAFT 17

Mid-Pressure Misting Fans	17
High-Pressure Misting Fans	17

BIG AIR 18

Industrial Ceiling Fans	18
-------------------------	----

GREEN PRODUCTS 19

Solar Powered Roof Mount Ventilators	19
Solar Powered Gable Mount Ventilators	19
Solar Powered Turbine Replacement	19

COOL ATTIC **20**

Gable Mount Power Attic Ventilators	20
Roof Mount Power Attic Ventilators	21
Wireless Hub	22
Standard Whole House Fans	23
Ducted Whole House Fans	24
Static Vents	25
Wind Turbines	26

NUVENT **28**

SH Series / MS Series / CF Series Bath Fans	28
Contractor Job Packs	30
Ceiling Radiation Dampers	30
Gear Dryers	31

HETR **32**

Tower Heaters	32
Pedestal Heaters	33
Wall Mount Heaters	33

REPLACEMENT PARTS **34**

Parts and Accessory Information	34
---------------------------------	----

ABOUT US / CONTACT LIST **35**

Our Company	35
Contact Information	35

Featured Products For 2018



BARREL FANS

Page
8



WET/DRY VACUUMS

Page
11





**PLASTIC OSCILLATING
PEDESTAL FANS**



Page
12

**METAL NON-OSCILLATING
FLOOR FANS**



Page
10

**PLASTIC NON-OSCILLATING
FLOOR FANS**



**MID-PRESSURE
MISTING FANS**



Page
17



**WET LOCATION
CEILING FANS**



Page
18

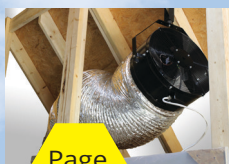


**WIRELESS
CONTROLLER HUB**



Page
22

DUCTED WHOLE HOUSE FANS



Page
24



AIR MOVEMENT AND ACCESSORIES FOR THE PROFESSIONAL



PORTABLE AIR CIRCULATORS

- Heavy duty 2-speed thermally protected PSC commercial or industrial motors
- Rugged roll-formed pre-coated steel housing for improved durability
- Convenient handles for portability
- Rust-resistant OSHA compliant grilles
- 2-year limited warranty



DIRECT AND BELT DRIVE COMMERCIAL FANS

Pre-positioned hanging hardware receivers for installation of additional MaxxAir Pro accessories.

BF30DDBLKPRO 30" Direct Drive
5500 CFM (high) / 3850 CFM (low)

BF42BDBLKPRO 42" Belt Drive
13300 CFM (high) / 9500 CFM (low)



BELT DRIVE INDUSTRIAL FANS

Large volume air mover featuring four caster wheels to ensure the fan is easily maneuvered. Two casters lock via foot pedal to keep the fan safely in place during operation.

BF60BDBLKPRO 60" Belt Drive
19000 CFM (high) / 12000 CFM (low). 11-ft power cord.

Cover - XXBF30COVERBLK / XXBF42COVERBLK



- Keeps out unwanted dust and dirt when not in use
- Lightweight and durable material

Flex Duct - XXBF2430DUCT



- 128" L 210D nylon duct which collapses into a convenient carry case
- Use for both intake and exhaust ventilation where it's needed

***Available for 24" and 30" model only**

Hanging Assembly - XXWBRKT3042



- Get air circulation in areas where floor space is at a premium
- Fully assembles in less than 20 minutes

Wall Bracket - XXWALLARM



- Mounts to both wall and ceiling, and metal or wood surfaces
- Powder-coated steel construction

Dock Arm - XXDOCKARM



- Extends and retracts as needed to save space
- 2 outlet plug pre-installed with on/off switch

Work Light - XXLED950



- 4 independent LEDs
- Low heat and energy efficient
- Used independently of hanging system

***Pro accessories are also available for our 24" tilt fans, including wall bracket systems, covers, stand fan extensions, and more. Please call Customer Service at 800.433.1626 for more details.**



FLEX BARREL FANS

- 2-speed thermally protected motor
- Toggle switch speed selection
- Dent-resistant high density polyethylene housing
- OSHA compliant grilles
- 9-in wheels and built-in handles for portability
- Non-skid positioning legs
- 7.5-ft 3-prong power cord

**DENT
RESISTANT
HOUSING**



DIRECT DRIVE

FLEX FANS

BF42DDPEBLK 42" Direct Drive

BF36DDPEBLK 36" Direct Drive

BF30DDPEBLK 30" Direct Drive

BELT DRIVE

FLEX FANS

BF48BDPEBLK 48" Belt Drive

BF42BDPEBLK 42" Belt Drive

BF36BDPEBLK 36" Belt Drive





HIGH VELOCITY AIR MOVEMENT



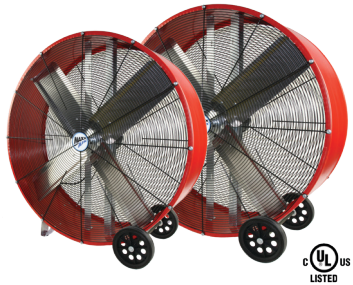
PORTABLE AIR CIRCULATORS

- Heavy duty 2-speed thermally protected PSC commercial or industrial motors
- Rugged 22-gauge galvanized steel housing
- Non-skid positioning legs
- Convenient handles for portability
- Safe, OSHA compliant grilles
- C-UL-US Listed
- 8-ft power cord
- 2-year limited warranty

DIRECT DRIVE COMMERCIAL FANS

BF36DD 36" Direct Drive
9000 CFM (high) / 6300 CFM (low)

BF30DD 30" Direct Drive
5500 CFM (high) / 3850 CFM (low)



BELT DRIVE INDUSTRIAL FANS

BF48BD 48" Belt Drive
18000 CFM (high) / 10100 CFM (low)

BF42BD 42" Belt Drive
13300 CFM (high) / 9500 CFM (low)

BF36BD 36" Belt Drive
10200 CFM (high) / 7300 CFM (low)



24" 2N1 TILT / STAND FAN

BF24TF2N1 YEL Tilt Fan (Direct Drive)
4000 (high) / 2800 (low) CFM . Converts from a roll-around floor fan with snap-on snap-off wheels to a 52" stand fan with leg extensions.

24" TILT FAN

BF24TF YEL Tilt Fan (Direct Drive)
4000 (high) / 2800 (low) CFM .Same as 2N1 but without leg extensions.

Wall Mount Bracket available for this model. Phone Customer Service at 1.800.433.1626 for details.

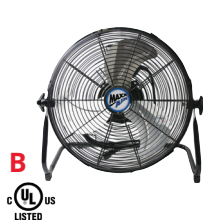
Models:
BF24TF YEL
BF24TF2N1YEL

24" Tilt Fan
24" 2N1 Tilt/Stand Fan



FLOOR FANS

- 3-speed energy efficient motor
- Tilting fan head
- Individually balanced fan blades for minimum vibration
- Sturdy base with non-skid feet
- 1-year limited warranty



METAL NON-OSCILLATING FLOOR FANS

A. HVFF16T RED 16" Red Turbo Floor Fan

Constructed of powder-coated steel in red finish. Pre-installed handle on housing for easy transport. Built-in cord wrap. 6-ft power cord.

B. HVFF 14 14" Black Floor Fan

Constructed of a durable black powder-coated finish for ease in cleaning. Built-in cord wrap on rear grille. 6-ft power cord.

C. HVFF 20S RED 20" Red Shroud Floor Fan

Constructed of a rugged 22-gauge powder-coated steel shroud for improved airflow. 6-ft power cord.

D. HVFF 20 20" Black Floor Fan

Constructed of a durable black powder-coated, RoHS compliant finish for ease in cleaning. Power cord retainer. 5-ft power cord.

METAL OSCILLATING FLOOR FANS

E. HVFF18 INOSC 18" Black Shroud Floor Fan

Constructed of powder-coated steel in black finish. Space-saving internal oscillation with toggle switch. Built-in cord wrap on rear grille. Converts to wall-mount if desired. 6.5-ft power cord.



PLASTIC NON-OSCILLATING FLOOR FANS

F. HVFF 14P 14" Black Floor Fan

Lightweight and easily portable. Dial switch speed selection. 6.5-ft power cord with 2-prong plug and safety fuse.

G. HVFF 18P 18" Black Floor Fan

Lightweight and easily portable. Dial switch speed selection. 6.5-ft power cord with 2-prong plug and safety fuse.



WET/DRY VACUUMS

- Vacuums both wet and dry debris
- Includes accessory kit with onboard accessory storage
- Airblower setting
- Ergonomic design
- Heavy-duty line cord
- Great for home, workshop, garage, and auto use

A. WDV2.5 2.5 Gal Wet/Dry Vac
Very portable with cord wrap at the back to store the 11-ft power cord.



B. WDV12 12 Gal Wet/Dry Vac
Caster wheels for easy transport with 17-ft heavy duty line cord with ALCI plug.



C. WDV16 16 Gal Wet/Dry Vac
Caster wheels for transport and 17-ft heavy duty line cord with ALCI plug.



D. WDV19 19 Gal Commercial Wet/Dry Vac
Front and rear hose attachments, fabric filter assembly with 2 extension wands, elbow accessory and a squeegee tool.



Model	Capacity (Gallons)	Peak HP	Casters?	Drain Valve?	Crevice Tool?	Pickup Tool?	Floor Tool?	Plug Type
A. WDV2.5	2.5	1.75	No	No	Yes	Yes	No	3-PRONG
B. WDV12	12	5.5	Yes	Yes	Yes	Yes	Yes	ALCI
C. WDV16	16	6.5	Yes	Yes	Yes	Yes	Yes	ALCI
D. WDV19	19	-	Yes	Yes	No	No	Yes	ALCI

PEDESTAL FANS

- 3-speed heavy duty motors provide powerful airflow
- OSHA compliant rust resistant grilles
- Easy to assemble with household tools



METAL NON-OSCILLATING

PEDESTAL FANS

A. HVPF 20 OR 20" Outdoor Rated Model

Up to 4600 CFM (high). 9-ft GFCI power cord. 1-year limited warranty.

B. HVPF 30 30" Telescoping Model

4800 CFM (high) / 4400 CFM (medium) / 4100 CFM (low). 6-ft power cord. 2-year limited warranty.

C. HVPF 30 YOKE 30" Yoke Model

4800 CFM (high) / 4400 CFM (medium) / 4100 CFM (low). 6-ft power cord. 2-year limited warranty.

METAL OSCILLATING

PEDESTAL FANS

D. HVPF 22 OSC 22" Telescoping Model

4100 CFM (high) / 3800 CFM (medium) / 3500 CFM (low). 6-ft power cord. 2-year limited warranty.

E. HVPF 30 OSC 30" Telescoping Model

4800 CFM (high) / 4400 CFM (medium) / 4100 CFM (low). 6-ft power cord. 2-year limited warranty.

PLASTIC OSCILLATING

PEDESTAL FANS

F. HVPF 16P 16" Telescoping Model

Up to 1100 CFM (high). 6.5-ft power cord with 2-prong plug and safety fuse. Button panel operation. 1-year limited warranty.

G. HVPF 18P 18" Telescoping Model

Up to 1650 CFM (high). Timer and sleep mode settings. 6.5-ft power cord with 2-prong plug and safety fuse. Remote control (included) or button panel operation. 1-year limited warranty.



DESK FANS



- 1-speed setting with on/off toggle switch
- Durable metal body construction
- Steel base with adjustable, non-skid grips
- 1-year limited warranty



Powered by USB
or standard
outlet

Models:

HVDF4	4" Desk Fan
HVDF6	6" Desk Fan
HVDF8	8" Desk Fan



WALL MOUNT FANS

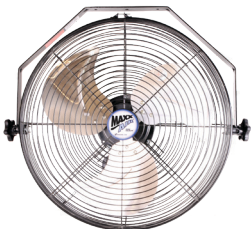
- 3-speed design
- Powder-coated steel finish for durability
- OSHA compliant rust resistant grilles for safety during operation
- Ventilate hard-to-reach corners while preserving valuable floor space

18-IN WALL MOUNT FANS

HVWM 18

18" Non-Oscillating 3-Blade Model

Up to 1450 CFM. Totally enclosed, dust-proof and energy efficient PSC motor. Fan head tilts 180° to control air direction. Rugged hanging bar. Pull chain operation. 10-ft power cord. 1-year limited warranty.



HVWM 18 CD



18" Non-Oscillating 2-Blade Model

Up to 3500 CFM (high). Totally enclosed, dust-proof and energy efficient PSC motor. Fan head tilts 180° to control air direction. Rugged hanging bar. Dial switch operation. 1-year limited warranty.



A HUB model is available for this fan type. Please see page 22 for more information.

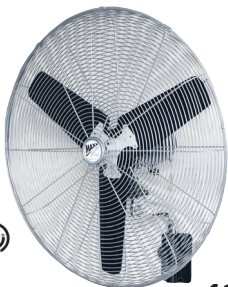
30-IN WALL MOUNT FANS

HVWM 30 30" Non-Oscillating Model

4800 CFM (high) / 4400 CFM (medium) / 4100 CFM (low). Heavy duty thermally protected motor. Wall bracket features pre-punched holes for easy mounting. 8-ft power cord. Pull chain operation. 2-year limited warranty.

HVWM 30 OSC 30" Oscillating Model

Mirrors the features of the HVWM 30, but with the added advantage of 90° oscillation.





FLOOR DRYING FANS

- Heavy duty 3-speed induction motor
- Rugged polymeric housing
- Balanced carry handle
- 20-ft power cord with cord wrap
- 1-year limited warranty

HVCF4000 High Velocity Floor Drying Fan

4000 CFM (high) / 3300 CFM (medium) / 2500 CFM (low) at 10.5A / 9.5A / 8.2A respectively. Constructed of a rugged yellow polymeric housing for visibility and safety.

CONFINED SPACE VENTILATOR

- 2-speed enclosed motor
- Exhaust or intake function
- Outdoor use with GFCI outlet
- 20-ft flex hose included
- OSHA compliant grille
- 1-year limited warranty



Models:

HVHF08COMBO
HVHF12COMBO

8" Fan with Hose (900 CFM)
12" Fan with Hose (2000 CFM)

Perfect for crawl spaces, attics, and basements

COMMERCIAL DEHUMIDIFIERS

- Low grain R410A refrigerant
- 25-ft hose for convenient water disposal
- Electronic control panel with relative humidity and temperature operation settings
- 10-ft LCDI plug
- 1-year limited warranty



DH 065 BLU Portable Blue Metal Model

Removes 140 pints of moisture per day (90° F / 90% RH), 320 CFM. 10-in tires for ease of mobility and folding telescopic handle. Designed for medium to large space applications.

Stands at 15" x 20" x 27"

DH 075 ORG Portable Orange Rotational Molded Model

Removes 145 pints of moisture per day (90° F / 90% RH), 265 CFM. 12-in tires for ease of mobility, and folding telescopic handle. Designed for large space applications. Stands at 20" x 18" x 28"

HEAVY DUTY EXHAUST FANS

- *Totally enclosed energy efficient thermally protected PSC motors*
- *Balanced 4-blade fan assembly*
- *Integrated, precision formed draft-free shutters*



All models may be used with the Adjustable Thermostat with Firestat™.

Model	CFM	Amps	Rough-In Opening
IF14	1400	2.65	17.25" x 17.25"
IF18	3000	5.34	20.75" x 20.75"
IF24	4100	4.35	28.25" x 28.25"
IF30	5500	6.3	34.25" x 34.25"
IF36	9000	5.1	40.25" x 40.25"

MEDIA AIR CLEANERS AND FILTERS

- *Provides a cleaner indoor environment without significantly reducing your system's airflow*
- *Limited lifetime warranty on Air Cleaner Housing models*

MEDIA AIR CLEANER

HOUSING MODELS

Powder-coated steel door and 20 gauge galvanized steel housing construction. Built-in tabs for easy install of the duct to the air cleaner housing.

AF20205 Air Cleaner

21.125" W x 22.75" H x 6.625" D

AF25165 Air Cleaner

24.625" W x 18.75" H x 6.625" D

AF25205 Air Cleaner

24.625" W x 22.75" H x 6.625" D



FILTER MEDIA

MERV 8 MODELS

Captures particles as small as 1.0 micron in size, including pollen, mold spores, and dust mites. Replace every 6-12 months to ensure top air quality.

Model	Rated Airflow	Filter Dimensions	Filter Model
AF20205	1400 CFM	20" x 20" x 5"	AF20205-M8
AF25165	1400 CFM	25" x 16" x 5"	AF25165-M8
AF25205	2000 CFM	25" x 20" x 5"	AF25205-M8

EVAPORATIVE COOLERS

- 110V high efficiency, totally enclosed motors connect directly to water line or use reservoir independently
- Fully submersible, recirculating water pumps with maintenance-free float valves
- Filter constructed of honeycombed, specially-formulated cellulose with thermosetting resin
- Rotomolded polythelene cooler body for long-lasting use
- Straight and swivel casters for easy portability
- Industrial-duty aluminum fan blades
- 1-year limited warranty

Lower air temperatures by as much as 26° without air conditioning!



EC18DVS 18" Direct Drive Cooler
5.7 total amps.
Stands at 54" H x 28" W x 25" D.

EC36D1 36" Direct Drive Cooler
11.76 total amps.
Stands at 66" H x 61" W x 32" D.

EC48B2 48" Belt Drive Cooler
14.8 total amps.
Stands at 71" H x 75" W x 32" D.

Model	Fan Motor	Effective Spot Cooling Area	CFM	Water Reservoir	Submersible Water Pump
EC18DVS	variable speed direct drive, 1/4 HP	900 sq ft	2600	25 gal	1/5 HP
EC36D1	1-speed direct drive, 1/2 HP	2600 sq ft	9700	10 gal	1/6 HP
EC48B2	2-speed belt drive, 1 HP	3600 sq ft	17600 (high) 11300 (low)	15 gal	1/6 HP

- **Fan-only and mist-fan options**
- **No-kink wire reinforced pickup line**
- **Pulse-dampening misting hose**
- **OSHA compliant rust resistant grilles**
- **1-year limited warranty**

MID-PRESSURE MISTING FANS

A. CDMP1420BLU

14" Misting Fan on 20 Gal Cooler

8-hour run time using the scratch-resistant 20 gallon cooler. 3-speed with pull chain. 5.5-ft power cord. Stands at 45" H x 24.5" L x 19.75" D when on cooler.

B. CDMP1810

18" Misting Fan on 10 Gal Cooler

Up to 3500 CFM operation. 3.5-hour run time using the 10 gallon cooler. Stands 49" H x 24" L x 15" D. 3-speed dial switch speed selection. Unit weighs 60 lbs without water. 10-ft power cord. Cooler color may vary from pictured setup.



C. CDMP1840GRY

18" Misting Fan on 40 Gal Cooler

Up to 3500 CFM operation. 13-hour run time using the scratch-resistant 40 gallon cooler. 3-speed dial switch speed selection. Unit weighs 68 lbs without water. Stands at 64" H x 24" L x 18" D when on cooler. 10-ft power cord.

HI-PRESSURE MISTING FANS

D. CDHP1840GRY

18" Misting Fan on 40 Gal Cooler

Up to 3500 CFM operation. 10-hour run time using the scratch-resistant 40 gallon cooler. 3-speed dial switch speed selection. Unit weighs 68 lbs without water. Stands at 64" H x 24" L x 18" D when on cooler. 10-ft power cord.

Model	Pressure	Pump	Cooler	Gal/Hr
A. CDMP1420B-LU	Mid	100 psi	20 gal	2.5
B. CDMP1810	Mid	180 psi	10 gal	3
C. CDMP-1840GRY	Mid	180 psi	40 gal	3
D. CDHP-1840GRY	Hi	1000 psi	40 gal	3.5



INDUSTRIAL CEILING FANS

- Energy saving DC motor with lower operating temperature
- Silent operation using a motor programmed with a stabilized current
- 9 blade design for high volume air movement
- 6 speeds offer customized air settings
- Reversible direction for changing seasonal needs
- Remote control included
- 1-year limited warranty



INDOOR USE CEILING FANS

A. ICF72 72" Indoor Use Ceiling Fan, Brushed Nickel
72" diameter once installed. Up to 10200 CFM operation. 26 lbs. Energy Star certified.

B. ICF96 96" Indoor Use Ceiling Fan, Brushed Nickel
96" diameter once installed. Up to 13000 CFM operation. 29 lbs. Energy Star certified.

WET LOCATION CEILING FANS

C. ICF96 WLWH 96" Wet Location Ceiling Fan, White
Safe for use in wet locations (when installed in a GFCI protected branch circuit). 96" diameter once installed. Up to 13000 CFM operation. 29 lbs.

D. ICF96 WLORB 96" Wet Location Ceiling Fan, Oil-Rubbed Bronze
Safe for use in wet locations (when installed in a GFCI protected branch circuit). 96" diameter once installed. Up to 13000 CFM operation. 29 lbs.



Interested in buying multiple ceiling fans?
Each remote can be paired to a specific fan,
giving you the ability to run each fan at
different speeds



SOLAR POWERED ATTIC VENTILATION

**UP TO 1000 CFM ON ALL MODELS
LINK ADDITIONAL SOLAR PANELS AND INCREASE YOUR FAN'S CFM**

ROOF MOUNT VENTILATORS WITH SOLAR PANEL



- 15 watt solar panel with 25' power cord
- 18 volt, thermally protected DC motor
- Constructed of heavy duty galvanized steel
- Expanded steel mesh grille to protect against birds and rodents
- 5-year limited warranty on DC motor and 10-year limited warranty on solar panel

CXSOLRFDM

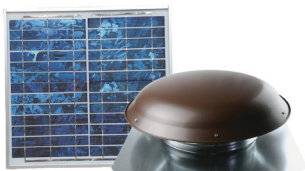
Solar Panel Mounted on Dome

Includes roof mount attic ventilator with solar panel pre-mounted to the dome unit.

CXSOLRF

Dome with Separate Solar Panel

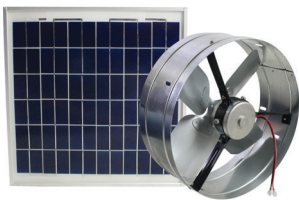
Includes both solar panel to be mounted separately and roof mount attic ventilator.



Easily customize placement of solar panel for your geographic location

GABLE MOUNT VENTILATOR WITH SOLAR PANEL

- 15 watt solar panel with 25' power cord
- 18 volt, thermally protected DC motor
- Shroud constructed of heavy duty galvanized steel
- Mounts behind existing louvers
- 5-year limited warranty on DC motor and 10-year limited warranty on solar panel



CXSOLGB

Gable Ventilator with Solar Panel

Includes gable mount ventilator and solar panel.



ROOF AND ATTIC VENTILATION



GABLE MOUNT POWER ATTIC VENTILATORS

- *Completely preassembled*
- *Easy installation —no holes in roof required*
- *Fits behind existing louvers or order with optional shutter*

- *Precision balanced fan blades*
- *Adjustable thermostat*
- *Engineered motor mount for minimum vibration and extended motor life*

CX2500

1650 CFM Gable Ventilator

14" fan with a 2.1A PSC motor. Lifetime warranty.

CX1600

1600 CFM Gable Ventilator

14" fan with a 4.5A heavy duty motor. 2-year limited warranty.

CX1500

1300 CFM Gable Ventilator

14" fan with a 2.6A heavy duty motor. 2-year limited warranty.



Order the gable mount ventilator shutter if you are not installing the gable mount unit behind existing louvers.

<i>Model</i>	<i>Attic Size (sq ft)</i>	<i>Intake (sq ft)</i>
CX2500	2500	600
CX1600	2400	600
CX1500	1850	600



GABLE MOUNT VENTILATOR SHUTTER

CX2121AM

Automatic Gable Shutter

Fully automatic shutter for all Cool Attic gable mount ventilator units. Constructed of high-impact metal frame. Felt-padded, .020 gauge aluminum louvers for quiet operation.

Shutter measures 22" W x 22" H x 3" D. Ships preassembled.



ROOF MOUNT POWER ATTIC VENTILATORS

- 14" fan size
- Rugged and efficient domes
- Motors built to last
- Proven and reliable construction
- Adjustable thermostats

CX3000EE SERIES (1400 CFM)

2.1 AMP ENERGY EFFICIENT PSC MOTOR

CX3000EEAM Series

Galvanized Steel Power Attic Ventilator

Galvanized steel dome, galvanized steel venturi construction. Available in mill, brown, black, and weathered grey.

CX3000EEAA Series

Aluminum Power Attic Ventilator

Duradome® spun aluminum, aluminum venturi construction. Available in mill, brown, black, and weathered grey.

CX4000 SERIES (1600 CFM)

5.1 AMP HEAVY DUTY PSC MOTOR

CX4000AM Series

Galvanized Steel Power Attic Ventilator

Galvanized steel dome, galvanized steel venturi construction. Available in mill, brown, black, and weathered grey.

CX4000AA Series

Aluminum Power Attic Ventilator

Duradome® spun aluminum, aluminum venturi construction. Available in mill, brown, black, and weathered grey.

CX2001 SERIES (1400 CFM)

4.5 AMP HEAVY DUTY MOTOR

CX2001AM Series

Galvanized Steel Power Attic Ventilator

Galvanized steel dome, galvanized steel venturi construction. Available in mill, brown, black, and weathered grey.

CX2001AA Series

Aluminum Power Attic Ventilator

Duradome® spun aluminum, aluminum venturi construction. Available in mill, brown, black, and weathered grey.

CX1000 SERIES (1080 CFM)

2.6 AMP HEAVY DUTY MOTOR

CX1000AM Series

Galvanized Steel Power Attic Ventilator

Galvanized steel dome, galvanized steel venturi construction. Available in mill, brown, black, and weathered grey.

Galvanized & Aluminum Dome Colors



Mill



Black



Brown



Weathered Grey

Model	CFM	Attic Size (sq ft)	Motor Amps	Intake (sq in)	Dome* Type	Warranty
CX3000	1400	2000	2.1 PSC	600	GS, AL	Lifetime
CX4000	1600	2400	5.1 PSC	600	GS, AL	5 yrs
CX2001	1400	2000	4.5	600	GS, AL	2 yrs
CX1000	1080	1600	2.6	600	GS	2 yrs

*Dome Type: GS=Galvanized Steel, AL=Duradome™ Spun Aluminum

WIRELESS CONTROLLER HUB

- Control a single HUB fan or multiple HUB fans via your smart device
- HUB arrives pre-wired to your fan model and operates over a WiFi connection—just plug your fan into a standard 120V outlet to start!
- App available for download online via most standard smart device stores



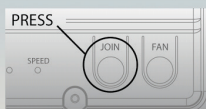
Hub controllers are currently being implemented on the following units:

Ducted Whole House Fans
Direct and Belt Drive Whole House Fans
2-Blade 18" Wall Mount Fan

Add a Device



To add a new device(s) to the network, press the Listen button below and then press the Network Join button on the Fan Controller(s) you wish to add to the network.



In-app instructions make pairing your fan for the first time quick and easy

Please enter a Fan Controller name. Typically the name is associated with the location of the device.

Living Room 

Select the number of fan speeds for this Fan Controller.

1

2

3

Operate multiple fans from the same app—and make each fan easily recognizable with a custom name



Turn each fan on and off, and set a timer and speed for your fan directly from the app



Interested in learning more about the HUB models? Look for this logo next to the product description in this pocketbook!

STANDARD WHOLE HOUSE FANS

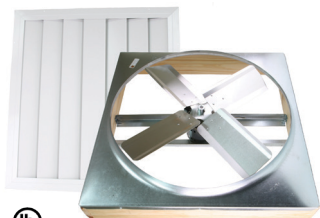
- Joist-in or joist-out installation
- 2-speed, thermally protected PSC motor
- Tough steel motor struts
- Precision-balanced aluminum fan blade assembly features 4 blades for greater air movement
- Steel venturi for enhanced durability

CX BD SERIES BELT DRIVE WHOLE HOUSE FANS

- CX24BD2SPD** 24" Belt Drive
4500 CFM (high) / 3100 CFM (low)
- CX30BD2SPD** 30" Belt Drive
7800 CFM (high) / 5400 CFM (low)
- CX36BD2SPD** 36" Belt Drive
9700 CFM (high) / 6800 CFM (low)



HUB models are available for this fan type. Please see page 22 for more information.



CX DD SERIES DIRECT DRIVE WHOLE HOUSE FANS

- CX242DDWT** 24" Direct Drive
4500 CFM (high) / 3100 CFM (low)
- CX302DDWT** 30" Direct Drive
7500 CFM (high) / 5200 CFM (low)

HUB models are available for this fan type. Please see page 22 for more information.

Model	Square Footage of Living Area (or Attic Size if Multi-Story)
CX24BDM-2SPD	up to 1800 sq ft (1 story)
CX30BD2SPD	2000 - 3000 sq ft (1 story)
CX36BD2SPD	over 3200 sq ft (1 story)
CX242DDWT	up to 1800 sq ft (1 story)
CX302DDWT	2000-3000 sq ft (1 story)

Whole House fans are designed for ceiling mount installations only. If you are seeking a fan for wall exhaust purposes, please see our industrial exhaust fan section.

DUCTED WHOLE HOUSE FANS



- No cutting of ceiling joists required
- 2-speed, thermally protected motor
- Heavy duty galvanized steel fan housing and plenum box
- Built-in backflow damper with R5 insulation keeps hot air from entering back into your home
- 12' airtight, triple-ply hose
- 10-year limited warranty



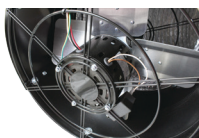
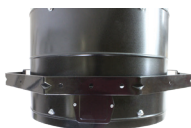
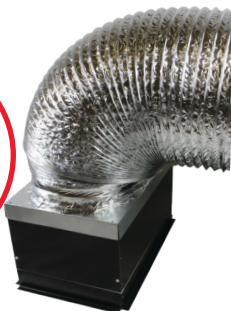
WIRE-IN DIRECT DRIVE DUCTED WHOLE HOUSE FANS

- CX1401** 14" Direct Drive
Up to 1600 CFM. Uses 14" diameter hose.
- CX1801** 18" Direct Drive
Up to 2700 CFM. Uses 18" diameter hose.

HUB models are available for this fan type. Please see page 22 for more information.



Distinct and stylish white ceiling grid protects the plenum box above and complements any space!



Model	Cooling Area	NFA
CX1401	up to 533 sq ft	requires 310 sq in
CX1801	up to 930 sq ft	requires 535 sq in



STATIC VENTS

- Create constant airflow in the attic
- Save energy costs by reducing strain on heating/cooling systems
- Help prolong shingle life and protect roofing components

EXHAUST VENTS

VX25 SERIES

ROUND VENTS

VX25 Galvanized Steel Round Vent
163" Net Free Area. Galvanized steel dome. Available in mill, brown, black, and weathered grey.

VX25 RG Round Vent with Rain Guard
Galvanized steel dome with rain guard. Available in mill, brown, black, and weathered grey.

SBV 603 SERIES

SLANT BACK VENTS

SBV 603 Aluminum Slant Back Vent
51" Net Free Area. Aluminum construction. Available in mill, brown, black, and weathered grey.

SBV 603 GV Galvanized Steel Slant Back Vent
51" Net Free Area. Galvanized steel construction. Available in mill, brown, black, and weathered grey.

SBV 40 SERIES

SLANT BACK VENTS

SBV40 Galvanized Steel Slant Back Vent
40" Net Free Area. Galvanized steel construction. Available in brown, black, and weathered grey.

STV-51 SERIES

SQUARE TOP VENTS

STV-51 GV Galvanized Steel Square Top Vent
51" Net Free Area. Galvanized steel construction. Available in brown, black, and weathered grey.

SBV 61 SERIES

LOW PROFILE SLANT BACK VENTS

SBV 61 Polypropylene Low Profile Slant Back Vent
61" Net Free Area. Polypropylene plastic construction. Available in grey, brown, black, weathered grey, and white.



VX25



SBV 603



SBV 40



STV-51



SBV 61

Model	Base	Opening
VX25	25" x 25"	15" diameter
VX25RG	25" x 25"	15" diameter
SBV 40	14" x 16.75"	8.5" diameter
SBV 603, SBV 603 GV	16" x 20"	8" diameter
STV-51 GV	16.5" x 17.5"	8" x 8"
SBV 61	17" x 18"	9" x 9"

INTAKE VENTS

WALL AND GABLE LOUVERS

SGV88	8" x 8" gable louver
SGV1212	12" x 12" gable louver
SGV1218	12" x 18" gable louver
SGV1418	14" x 18" gable louver
SGV1424	14" x 24" gable louver
SGV1824	18" x 24" gable louver
SWL2430	24" x 30" gable louver



Aluminum. Most louvers available in mill and white.

SOFFIT AND UNDEREAVE VENTS

CX8	Continuous Soffit Vent. 8' lengths.
CX64	4" x 16" undereave
CX68	8" x 16" undereave



Aluminum. Most available in mill, brown, and white.

MINI VENTS

MV1	1" aluminum, mill.
MV2	2" aluminum, mill.
MV3	3" aluminum, mill.
MV4	4" aluminum, mill.



WIND TURBINES

- Reduce attic temperatures by as much as 50° F in a matter of minutes.
- Zero energy costs
- Choice of internal or external bracing



Internally braced turbine



Externally braced turbine



PREMIUM SERIES WIND TURBINES

- Premium aluminum construction with reinforced bracing
- Premium grade stainless steel ball bearing system
- Adjustable to a 12/12 pitch
- Limited lifetime warranty

All Premium Series turbines comply with the Texas Department of Insurance's Building Specification for windstorm resistant construction. Also tested and approved by Queensland University.

Model	Description
CX12IBAL	12" internally braced with base*
CX14IBAL	14" internally braced with base
CX12EBAL	12" externally braced with base

Premium turbines are available in a variety of colors. Add MIL (mill), BLK (black), BRN (brown), or WG (weathered grey) to the part number to designate your desired color.

All turbines require a minimum 432 sq in intake ventilation for proper functioning. Please see the Intake Vents section for information on products that will help to meet these requirements.

Internally Braced Turbines



Mill



Black



Brown



Weathered Grey

Externally Braced Turbines



Mill



Black



Brown



Weathered Grey

STANDARD SERIES

WIND TURBINES

- Galvanized steel construction
- Co-polymer bearing system
- Adjustable to a 6/12 pitch

All Standard Series turbines comply with the Texas Department of Insurance's Building Specification for windstorm resistant construction. Constructed to meet or exceed industry specifications and standards.

Model	Description
CX12IBGVT	12" top only (internally braced)
CX12IBGV	12" with base (internally braced)
CX14IBGV	14" with base (internally braced)
CX12BRGV	12" base/riser combo, mill (8-pack)
CX12EBGVT	12" top only (externally braced)
CX12EBGV	12" with base (externally braced)

**Standard Series turbines are available in Mill color only.*



BATH VENTILATION

Discover the advantage of NuVent Bath Ventilation Fans. Choose from a wide variety of models with different air delivery and ducting options for unique installations. Ideal for baths, powder rooms or utility rooms from 45 to 120 sq ft. All feature our patented curved grille design for efficient airflow and contemporary styling.



SH SERIES FANS AND FAN-LIGHTS

High Efficiency
and Super Quiet

- High efficiency PSC motors
- Low sones
- Select models have humidistat which automatically turns fan on when humidity in room increases



MS SERIES FANS AND FAN-LIGHTS

Square Grille,
Economical Choice

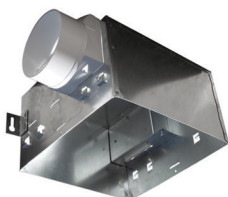
- Powerful, quiet, and styled for good looks
- Gracefully curved grilles for efficient airflow



CF SERIES FANS

Contractor Fans

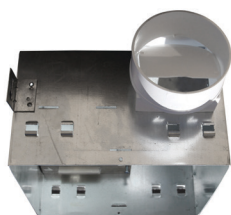
- 50 CFM and 70 CFM models
- Plastic or optional metal duct collars



M Series Universal Housing shown for example.

BATH FAN COMPARISON CHART

	<i>Model</i>	<i>Bath Size (sq ft)</i>	<i>Other Rooms (sq ft)</i>	<i>CFM</i>	<i>Sones</i>	<i>Amps</i>	<i>Lamp Watts</i>
S H	<i>NXSH50</i>	<i>45</i>	<i>60</i>	<i>53</i>	<i>0.8</i>	<i>0.30</i>	<i>-</i>
	<i>NXSH80</i>	<i>75</i>	<i>100</i>	<i>86</i>	<i>1.3</i>	<i>0.35</i>	<i>-</i>
S E R I E S	<i>NXSH110</i>	<i>105</i>	<i>135</i>	<i>114</i>	<i>2.0</i>	<i>0.40</i>	<i>-</i>
	<i>NXSH130</i>	<i>120</i>	<i>160</i>	<i>127</i>	<i>2.0</i>	<i>0.40</i>	<i>-</i>
	<i>NXSH80L</i>	<i>75</i>	<i>100</i>	<i>86</i>	<i>1.3</i>	<i>1.35</i>	<i>100</i>
	<i>NXSH110L</i>	<i>105</i>	<i>135</i>	<i>114</i>	<i>2.0</i>	<i>1.40</i>	<i>100</i>
	<i>NXSH130L</i>	<i>120</i>	<i>160</i>	<i>127</i>	<i>2.0</i>	<i>1.40</i>	<i>100</i>
M S S E R I E S	<i>NXMS50</i>	<i>45</i>	<i>60</i>	<i>52</i>	<i>3.0</i>	<i>0.80</i>	<i>-</i>
	<i>NXMS70</i>	<i>65</i>	<i>85</i>	<i>70</i>	<i>4.5</i>	<i>0.88</i>	<i>-</i>
	<i>NXMS90</i>	<i>85</i>	<i>110</i>	<i>90</i>	<i>3.5</i>	<i>0.55</i>	<i>-</i>
	<i>NXMS50L</i>	<i>45</i>	<i>60</i>	<i>52</i>	<i>3.0</i>	<i>1.80</i>	<i>100</i>
	<i>NXMS70L</i>	<i>65</i>	<i>85</i>	<i>70</i>	<i>4.5</i>	<i>1.88</i>	<i>100</i>
	<i>NXMS90L</i>	<i>85</i>	<i>110</i>	<i>90</i>	<i>3.5</i>	<i>1.55</i>	<i>100</i>
C F S E R I E S	<i>NX503</i>	<i>45</i>	<i>65</i>	<i>50</i>	<i>4.0</i>	<i>0.90</i>	<i>-</i>
	<i>NX703</i>	<i>65</i>	<i>85</i>	<i>70</i>	<i>5.5</i>	<i>1.80</i>	<i>-</i>
	<i>NX504</i>	<i>45</i>	<i>60</i>	<i>50</i>	<i>4.0</i>	<i>0.90</i>	<i>-</i>
	<i>NX704</i>	<i>65</i>	<i>85</i>	<i>70</i>	<i>5.5</i>	<i>1.80</i>	<i>-</i>



M Series Universal Housing shown for example.

CONTRACTOR JOB PACKS

"A" AND "B" PACKS

- Available in the CF, MS, and SH series
- Offer flexibility during rough-in and simplify upgrades

"A" Packs (housings, duct collars, and wiring components) and "B" packs (motor and grille trim kits) are shipped in separate multi-packs to allow for easy storage and avoid loss or damage during installation.

Series	Rough-In Kit	Used With	Pack Qty
CF	NX503/703A	NX503B, NX703B	6
MS	NXM2001A	NXMS Series: 50B / 70B / 90B / 110B 50LB / 70LB / 90LB / 110LB	4
SH	NXS2001A	NXSH Series: 50B / 80B / 110B / 130B 50LB / 80LB / 110LB / 130LB	4



CEILING RADIATION DAMPERS

- Removable damper assembly and sleeve to allow easy motor replacement
- UL approved non-asbestos insulation blanket
- Heat sensitive 165° F replaceable fusible link

Radiation dampers are ordered in 3 parts: housing, motor/grille assembly, and damper. Each part is available only in job packs.

CF SERIES RADIATION DAMPERS - 6 pk

CFRD Dimensions	L	W	H
Radiation Damper	8 1/16"	7 5/8"	3 3/4"
Assembled Damper/Housing	8 1/16"	7 5/8"	7 1/4"

MS SERIES RADIATION DAMPERS - 4 pk

NXMRD Dimensions	L	W	H
Radiation Damper	9 3/8"	9 1/2"	3"
Housing	9 1/4"	9 3/8"	5 5/8"
Assembled Damper/Housing	9 3/8"	9 1/2"	8"
Radiation Damper with Light	9 3/8"	9 1/2"	5 3/8"

SH SERIES RADIATION DAMPERS - 4 pk

NXSRD Dimensions	L	W	H
Radiation Damper	11 3/8"	9 5/8"	4 1/4"
Housing	11 1/4"	9 1/2"	7 3/4"
Assembled Damper/Housing	11 3/8"	9 5/8"	11 3/8"

GEAR DRYERS

- Prevents shoe odor due to bacterial growth
- 180 minute timer and manual on/off
- Travel-friendly design with dryer arm storage and built-in carry handle
- Perfect size for any utility room or garage
- Available in black/grey combination only
- 1-year limited warranty



NON-HEATED GEAR DRYERS

SD1001 DC Shoe Dryer

Best used for hiking boots, work and dress shoes, wading boots, tennis shoes, and athletic shoes. Dry other gear, including small backpacks, gloves, and caps. Will not harm technical fabrics or leather.



HEATED GEAR DRYERS

SD2001 AC Shoe Dryer

Best used for winter sports shoes, shoes being dried in colder climates, or shoes that tend to get soaked often. Also dries gloves, ice skates, helmets, and other athletic equipment. On/Off toggle switch to dry using heat or air-only.



Unit	CFM	Dry Time	Temperature
SD1001	100 CFM	2 hours	75° (ambient)
SD2001	70 CFM	3 hours	80° - 85° (heat setting)

HETR

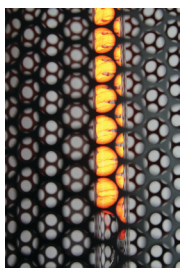
HEATING SOLUTIONS

BY **Ventamatic, Ltd.**
AN AIR OF EXCELLENCE



TOWER HEATERS

- Operates using radiant heat
- Requires no gas or other flammable fuels
- High efficiency carbon fiber heating element
- Anodized aluminum alloy frame for unparalleled durability
- Tip-over safety switch
- 1-year limited warranty



Efficient carbon fiber heating element provides quick, reliable heat.

Model:

H1014 35 Inch Portable Patio Heater

1200W High efficiency carbon fiber heating element provides 360 degrees of radiant heat. Requires no gas or other flammable fuels. Tip-over safety switch. Stainless steel base with 6 ft. power cord. 1-year limited warranty.



PEDESTAL HEATER



- *Requires no gas or other flammable fuels*
- *Stainless steel poles and base cover*
- *Anodized extruded aluminum alloy frame*
- *Aluminum reflector evenly concentrates heat outward*
- *High efficiency carbon fiber heating element*
- *Tip-over safety off switch*

Model:
H1018 Patio Stand Heater

1500W radiant heat. Requires no gas or other flammable fuels. Free standing design with adjustable height to bring warmth at the level it's needed most. 1-year limited warranty.

WALL MOUNTED HEATERS

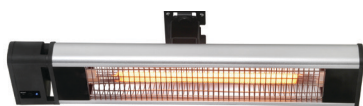


- *High rated aluminum reflector to concentrate heat outward*
- *Requires no gas or other flammable fuels*
- *Anodized extruded aluminum housing*
- *High efficiency carbon fiber heating element*
- *Secure locking system*
- *Includes remote control for easy on/off commands*



H1016
Wall Mount Heater

1500W radiant heat for outdoor lounges or indoor use in garages or workshops. 1-year limited warranty.



H1019
Wall or Ceiling Mount Heater

1500W radiant heat. 8 lbs. Perfect for outdoor lounges or indoor use in garages or workshops. 1-year limited warranty.

SEARCH. FIND. ORDER.

It's that easy! Have an older fan that needs working parts?

We've got what you need, available for order and shipment via our easy-to-navigate online parts site. Our web site carries a full line of accessories and parts across all of our Ventamatic product lines and brands, right there at your fingertips!



From motors to support braces and more, we carry parts under the following categories:

- *Power Attic Vents*
- *Barrel Fans*
- *Whole House Fans*
- *Industrial Fans*
- *NuVent*



Scan this QR code with your smartphone to open our replacement parts page



Need assistance finding your part?

*Call our customer service line at **800-433-1626**.*

Visit our replacement parts website at
<https://bvc.com/replacement-parts.html/>

ABOUT OUR COMPANY

VENTAMATIC, LTD. has provided the ventilation industry with **AN AIR OF EXCELLENCE** for over 70 years.

A pioneer in the ventilation industry since 1948, Ventamatic, Ltd. manufactures high quality air delivery and air movement products for the residential, commercial, industrial, and agricultural markets.

CONTACT LIST

Need more information? Use the contact methods below to keep in touch with us for the latest product updates.



Ventamatic, Ltd.
P.O. Box 728
Mineral Wells, TX 76068



800-433-1626 (Toll-Free)
940-325-9311 (Fax)



<http://www.bvc.com>

SOCIAL MEDIA



facebook.com/ventamaticltd



youtube.com/BVCFans

