

CONTENTS

SHORT TAPE RULES	806-809
LONG TAPE RULES	810
LEVELS	811-812
CHALK LINES	813
LAYOUT & MARKING TOOLS	814
SQUARES	815-817
ELECTRONIC LAYOUT TOOLS	818-819
KNIVES & BLADES	820-833
SAWS	834-839
HACKSAW BLADE	839
MITER BOX	839
HAMMERS	840-846
DEMOLITION TOOLS	847-849
CHISELS	850-852
FASTENING TOOLS	853-860
SCREWDRIVERS	861-866
HEX KEYS	866
FINISHING TOOLS	867-873
ILLUMINATION	873
PLIERS	874-877
SNIPS	877-878
WIRE CUTTER, VISE, ADJUSTABLE WRENCHES	878
WRENCHES	878-881
MECHANIC'S TOOLS	881-893
TOOL STORAGE	894-900
SAW HORSES	901-902



STANLEY® HAND TOOLS

STANLEY®



STANLEY®

PROFESSIONAL TOOLS YOU CAN RELY ON



**FATMAX® TAPE MEASURE WITH
BLADEARMOR® COATING - 1-1/4" X 25'**

Added durability with industrial-grade
BladeArmor® coating.



**QUICKCHANGE™ RETRACTABLE
BLADE UTILITY KNIFE**

Durable, all-metal knife body
construction with quick one-button
blade change - no tools.

**CUTTING, STRIKING,
MEASURING, AND MORE...
STANLEY® HAS WHAT
EVERY JOB NEEDS.**



HEAVY-DUTY ALUMINUM STAPLE GUN

Made of durable aircraft-aluminum
housing with an anti-jam mechanism to
save time.

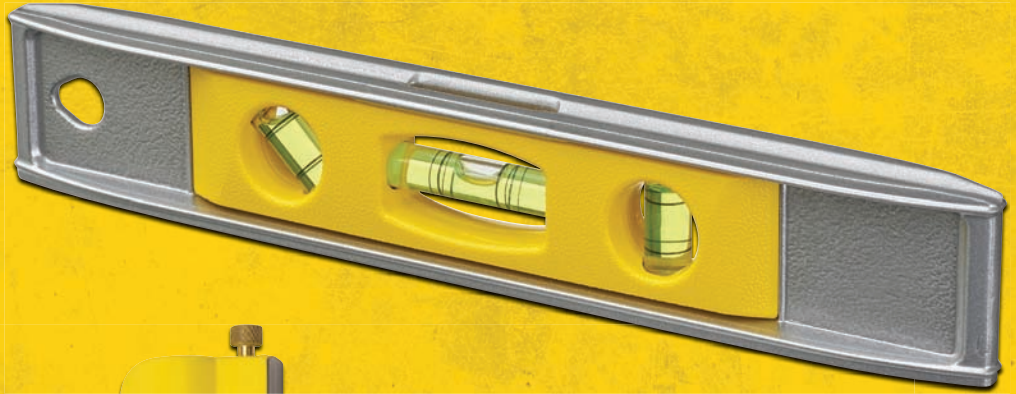


WONDER BAR® PRY BAR - 12-3/4"

Forged, high-carbon steel for strength and durability.

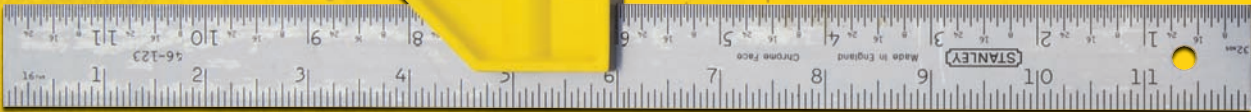
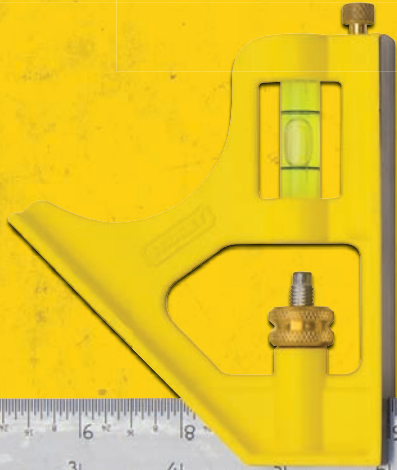
CAST ALUMINUM MAGNETIC TORPEDO LEVEL - 9"

Heavy-duty cast aluminum frame with magnetic strip.



PREMIUM DIE-CAST HANDLE COMBINATION SQUARE - 12"

Durably etched, hard-chrome-plated blades are rust resistant and made to last.



STUD SENSOR 100

AC detection identifies live wires up to 2" below the surface.

ESSENTIAL™ TOOLBOX - 19"

Newly redesigned and engineered to satisfy virtually any storage need.



STANLEY® FATMAX® TAPE RULES

- 13' blade standout.
- Compact case design.
- 6 in. of BladeArmor® reinforcement to help reduce breakage at the hook
- Maxshield™ blade coating is the longest-lasting blade coating ever applied to a FATMAX® tape measure
- Advanced internal dual-return spring allows for a reduced tape size that retains maximum strength and performance.
- Lock engages and disengages with ease, and holds strong when locked.
- New, screw-free belt clip design allows for easy fastening and removal

Product #	Blade Length (ft)	Blade Length (m)	Blade Width (in)	Stud Markings (in)
FMHT36325S	25	—	1-1/4	16
FMHT36335S	35	—	1-1/4	16

*Standout claims based on maximum performance



STANLEY® FATMAX® AUTO-LOCK TAPE RULES

- Auto-Lock Mode: For control and long blade life.
- Manual Mode: Disengage lock for speed marking.
- Detachable Hook: Allows user to work efficiently in different applications.
- 11' blade standout*: For reach and efficiency.
- BladeArmor®: 10X** blade life.
- Hook Storage: Securely stores hook on tape when not in use.
- Tether-ready: Through-hole for attaching a tool lanyard when working at heights. (Lanyard not included.)
- Made in the USA with global components.
- Mylar® film extends life of entire blade.

Product #	Blade Length (ft)	Blade Length (m)	Blade Width (in)	Stud Markings (in)
FMHT33316S	16	—	1-1/4	16, 19.2
FMHT33348	30	—	1-1/4	16, 19.2

*Standout claims based on maximum performance

**Compared to STANLEY 30-419



STANLEY® FATMAX® PREMIUM TAPE RULES W/ 13' BLADE STANDOUT

- 13' blade standout*.
- 1-1/4" wide blade for easy readability.
- 3" of BladeArmor® for added hook protection.
- High-impact ABS case with durable rubber holds up to heavy use.
- Rubber overmolded slide lock for durability and comfort.
- Rubber grip provides comfortable, slip-resistant hold.
- Three-rivet, corrosion-resistant Tru-Zero™ end hook for accurate measurements.

Product #	Blade Length (ft)	Blade Length (m)	Blade Width (in)	Stud Markings (in)
FMHT33502S	25	—	1-1/4	16, 19.2
FMHT33509S	35	—	1-1/4	16, 19.2

*Standout claims based on maximum performance



Mylar® is a registered trademark of DuPont Teijin Films.



STANLEY® FATMAX® MAGNETIC TAPE RULES

- 11' blade standout*.
- 1-1/4" wide blade for easy readability.
- Mylar® film extends life of entire blade.
- Tru-Zero™ magnetic hook for accurate measurements in all positions.
- Powerful rare earth magnet securely holds to steel surfaces.
- High-impact ABS case with durable rubber holds up to heavy use.
- Durable slide lock to hold tape blade in place.
- Rubber grip provides comfortable, slip-resistant hold.



Product #	Blade Length (ft)	Blade Length (m)	Blade Width (in)	Stud Markings (in)
FMHT33865S	25	—	1-1/4	16, 19.2
FMHT33866	26	8	1-1/4	16, 19.2

*Standout claims based on maximum performance

STANLEY® FATMAX® TAPE RULES W/ 11' BLADE STANDOUT

- 11' blade standout*.
- 1-1/4" wide blade for easy readability.
- 3" of BladeArmor for added hook protection.
- Mylar® film extends life of entire blade.
- High-impact ABS case with durable rubber holds up to heavy use.
- Durable slide lock to hold tape blade in place.
- Rubber grip provides comfortable, slip-resistant hold.
- Three-riquet, corrosion-resistant Tru-Zero™ end hook for accurate measurements.



Product #	Blade Length (ft)	Blade Length (m)	Blade Width (in)	Stud Markings (in)
33-716	16	—	1-1/4	16, 19.2
33-725	25	—	1-1/4	16, 19.2
33-726	26	8	1-1/4	16, 19.2
33-730	30	—	1-1/4	16, 19.2
33-805	33	10	1-1/4	16, 19.2
33-735	35	—	1-1/4	16, 19.2
33-740	40	—	1-1/4	16, 19.2

*Standout claims based on maximum performance

STANLEY® FATMAX® KEYCHAIN TAPE RULE

- 3' blade standout*.
- Polymer-coated blade withstands abrasion.
- Convenient and lightweight. Handy for quick measurements.
- Compact size fits in the pocket.
- Durable key ring makes it easy to carry anywhere.



Product #	Blade Length (ft)	Blade Width (in)	Stud Markings (in)
FMHT33706	6	1/2	16, 19.2

*Standout claims based on maximum performance

STANLEY® POWERLOCK® TAPE RULES

- 7' blade standout (excludes 33-116 and 33-158).
- Mylar® film extends life of entire blade.
- High-impact, chrome plated ABS case.
- Secure blade lock won't creep during measurements.
- Corrosion-resistant Tru-Zero™ end hook for accurate measurements.
- 36-081 blade features engineer scale.

Product #	Blade Length (ft)	Blade Length (m)	Blade Width (in)	Stud Markings (in)
33-116	16	—	3/4	16, 19.2
33-158	16	5	3/4	16, 19.2
33-425	25	—	1	16, 19.2
33-428	26	8	1	16, 19.2
33-430	30	—	1	16, 19.2
33-835	35	—	1	16, 19.2
36-081	25	—	1	16, 19.2



STANLEY® POWERLOCK® METAL CASE TAPE RULES

- Durable die-cast metal case.
- Mylar® film extends life of entire blade.
- Secure blade lock won't creep during measurements.
- Corrosion-resistant Tru-Zero™ end hook for accurate measurements.

Product #	Blade Length (ft)	Blade Length (m)	Blade Width (in)	Stud Markings (in)
33-212	12	—	1/2	16, 19.2
33-215	12	3.5	1/2	16, 19.2
33-272	12	—	1/2	16, 19.2
33-312	12	—	3/4	16, 19.2



STANLEY® POWERLOCK® POCKET TAPE RULE

- Polymer-coated blade withstands abrasion for long life.
- Chrome high-impact ABS case is job site tough.
- Slim case fits easily in pocket.
- Secure blade lock won't creep during measurements.
- Corrosion-resistant Tru-Zero™ end hook for accurate measurements.
- Back of blade provides scale that measures up to 3' diameter graduated in 1/64".

Product #	Blade Length (ft)	Blade Width (in)	Stud Markings (in)
33-115	10	1/4	16, 19.2



Mylar® is a registered trademark of DuPont Teijin Films.



STANLEY® LEVERLOCK® FRACTIONAL TAPE RULE WITH MAGNETIC TIP

- Push-release self-locking mechanism controls blade retraction.
- Polymer-coated blade withstands abrasion.
- Magnetic end hook holds securely to metal surfaces.
- High-impact ABS case with durable rubber holds up to heavy use.
- Corrosion-resistant Tru-Zero™ end hook for accurate measurements.
- fractional read blade graphics for quick and easy measurements.



Product #	Blade Length (ft)	Blade Width (in)	Stud Markings (in)	Color
STHT33270	25	1	16, 19.2	Orange

STANLEY® LEVERLOCK® TAPE RULES

- Automatic blade lock holds blade securely in position.
- Non-marring frictionless base to help protect work surface.
- Easy inside/outside measurements.
- 1.5X* stronger anti-glare blade.



Product #	Blade Length (ft)	Blade Length (m)	Blade Width (in)
STHT30810	12	—	1/2
STHT30812	16	—	3/4
STHT30825	25	—	1
STHT30830	30	—	1
STHT30758L	25	—	1

STANLEY® TAPE RULES

- Versatile 1/2", 3/4", and 1" wide blades and 7' standout (1" wide blades only).
- Polymer-coated blade withstands abrasion.
- Corrosion-resistant Tru-Zero™ end hook for accurate measurements.
- fractional read blade graphics for quick and easy measurements (only on 30-454).
- Ergonomically designed high-impact, ABS case.



Product #	Blade Length (ft)	Blade Length (m)	Blade Width (in)	Stud Markings (in)
30-485	12	—	1/2	16, 19.2
30-495	16	—	3/4	16, 19.2
30-496	16	5	3/4	16, 19.2
30-456	26	8	1	16, 19.2
30-454	25	—	1	16, 19.2
30-455	25	—	1	16, 19.2
30-464	30	—	1	16, 19.2

STANLEY® CLOSED CASE LONG TAPES

- High impact, high visibility yellow ABS case.
- Polymer-coated blade withstands abrasion for a long life.
- Easy wind drum for easy retraction.
- Easy to read markings.
- Hook nests neatly into contoured case.
- Belt clip for hands-free use and convenient transportation.
- Corrosion-resistant Tru-Zero™ folding end hook for accurate measurements.

Product #	Blade Length (ft)	Blade Width (in)	Stud Markings (in)
34-103	50	3/8	16
34-106	100	3/8	16



STANLEY® FIBERGLASS OPEN REEL LONG TAPES

- 1/2" wide blade with easy-to-read markings.
- 2-sided blade graphics with fractional inch/decimal foot scales.
- Polymer-coated blade withstands abrasion.
- High-impact ABS case with rubber grip holds up to heavy use
- Corrosion-resistant Tru-Zero™ folding end hook for accurate measurements.

Product #	Blade Length (ft)	Blade Width (in)
34-790	100	1/2
34-793	200	1/2





STANLEY® PRO I-BEAM LEVELS

- Heavy-duty aluminum I-beam construction provides rigidity and accuracy.
- Vials provide accuracy of 0.0015 in/in (0.15mm/m).
- 360° vials set directly into frame never need adjustment.
- Pipe groove for use on rounded surfaces.
- Shock-absorbing end caps hold up to heavy use.



Product #	Overall Length (in)	Vials	Hang Holes	Hand Holes	Width (in)
42-480	48	3 (1 Level, 2 Plumb)	0	2	1
42-324	24	3 (1 Level, 1 Plumb, 1 180°)	1	0	1
42-328	48	3 (1 Level, 1 Plumb, 1 180°)	1	2	1

STANLEY® ALUMINUM TOP-READ LEVELS

- Durable, I-beam construction made of aluminum.
- Vials provide accuracy of 0.002 in/in (2mm/m).
- Center top read vial for improved visibility.
- Low profile, shock-absorbing end caps.



Product #	Overall Length (in)	Vials	Hand Holes
42-072	12	3 (1 Level, 1 Plumb, 1 45°)	0
42-076	48	3 (1 Level, 1 Plumb, 1 45°)	2

STANLEY® SHOCK-RESISTANT MAGNETIC TORPEDO LEVEL

- Heavy-duty aluminum frame and bi-material body with shock absorbing rubber ends for strength and durability.
- Vials provide accuracy of 0.002 in/in (2mm/m).
- Open, top-read vial provides maximum readability.
- Magnetic strip to allow for hands-free operation on metal surfaces.
- Lighted version with auto shutoff is designed for low-light locations.
- Pipe groove for use on rounded surfaces.



Product #	Overall Length (in)	Vials	Hang Holes	Magnetic
43-511	9	3 (1 Level, 1 Plumb, 1 45°)	2	Yes

STANLEY® CAST ALUMINUM MAGNETIC TORPEDO LEVEL

- Heavy-duty, cast aluminum frame.
- Vials provide accuracy of 0.002 in/in (2mm/m).
- Center top read vial for improved visibility.
- Magnetic strip to allow for hands free operation on metal surfaces.
- Pipe groove for use on rounded surfaces.



Product #	Overall Length (in)	Vials	Hang Holes	Magnetic
42-465	9	3 (1 Level, 1 Plumb, 1 45°)	1	Yes

STANLEY® HIGH IMPACT ABS MAGNETIC TORPEDO LEVEL

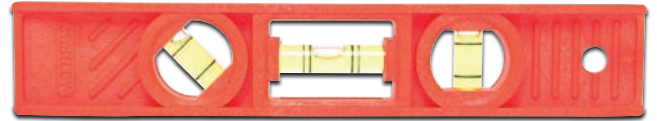
- Durable, shock-resistant ABS construction.
- Vials provide accuracy of 0.002 in/in (2mm/m).
- Center top read vial for improved visibility.
- Magnetic strip to allow for hands free operation on metal surfaces.
- Non-marring material will not damage finished surfaces.
- Pipe groove for use on rounded surfaces.



Product #	Overall Length (in)	Vials	Hang Holes	Magnetic
42-264	9	3 (1 Level, 1 Plumb, 1 45°)	1	Yes

STANLEY® HIGH IMPACT ABS TORPEDO LEVEL

- Durable, shock-resistant ABS construction.
- Vials provide accuracy of 0.002 in/in (2mm/m).
- Center top read vial for improved visibility.
- Non-marring material will not damage finished surfaces.
- Pipe groove for use on rounded surfaces.



Product #	Overall Length (in)	Vials	Hang Holes	Color	Magnetic
42-294	8	3 (1 Level, 1 Plumb, 1 45°)	1	Orange	No

STANLEY® FATMAX® MAGNETIC CAST TORPEDO LEVEL

- Magnified center block vial provides accuracy of 0.0005 in/in.
- Block plumb vials for an accuracy of 0.0005 in/in.
- Rare earth magnets for ultimate holding power.
- 180° rotating vial for duplicating precise angles.
- Die-cast aluminum Body for strength and long life.



Product #	Overall Length (in)	Vials	Hang Holes	Height (in)	Width (in)
FMHT43610	9	3 (1 Level, 1 Plumb, 1 180°)	2	1-7/8	7/8



STANLEY® FATMAX® CHALK REEL

- Die-cast aluminum housing for durability.
- 2X stronger* line – 3X* line abrasion resistance.
- Rewinds 5X faster* – has a 5:1 gear ratio.
- Quick gear release – crank will not spin when pulling out line.
- Stainless steel hook and crank handle.
- On-board hook storage.
- ChalkView™ case – see amount of chalk inside case.
- Premium polymer string resists breakage and fraying.



Product #	Contents	Chalk Line (ft)
47-480L	(1) Aluminum Chalk Line Reel	100

* Than base STANLEY® model 47-099

STANLEY® FATMAX® CHALK REELS

- Rewinds 3X faster* – has a 3:1 gear ratio.
- Holds up to a 4 oz. bottle of STANLEY® chalk.
- Stainless steel interlocking hook for joining lines.
- Chalk line has 2X the tensile strength of traditional lines and lasts twice as long.
- Water-resistant, high-impact ABS case with rubber grips is durable and easy to hold.
- Door for simplified refilling.



Product #	Contents	Chalk Line (ft)
47-140L	(1) Chalk Line Reel	100
47-681L	(1) Chalk Line Reel, (1) 4 oz. Blue Chalk, (1) Fine Tip Marker	100

* Than base STANLEY® model 47-099

STANLEY® DIE-CAST CHALK REEL

- Durable, heavy-duty die-cast aluminum body for long life.
- Long-wearing felt gasket hugs line and distributes uniform chalk coating.
- Universal hook has been designed for the rigors of everyday use.
- Can be used as plumb bob.



Product #	Contents	Chalk Line (ft)
47-099	(1) Chalk Line Reel	100

STANLEY® COMPACT CHALK LINE REEL

- Less than half the size of standard chalk reels (by volume).
- 30' (9 m) precision line snaps clean, accurate lines.
- High-impact ABS housing for durability and light weight.
- Over-molded soft grip helps provide comfortable and secure grip.
- 3:1 rewind gear ratio retracts line 3X faster than standard 1:1 reels.
- Slide-open door for quick chalk refills.
- Chalk reel capacity snaps more than 50 lines per refill.
- Belt clip for convenient transport.



Product #	Contents	Chalk Line (ft)
STHT47147	Compact Chalk Line Reel	30

STANLEY® BRASS PLUMB BOB

- Polished lacquer, solid brass construction for durability and rust resistance.
- Replaceable, hardened steel tip is long lasting.
- Extra tip included.
- Screw top simplifies attaching string to center of plumb.
- Thru hole ensures easy tightening.

Product #	Overall Length (in)	Weight (lbs)
47-973	8-11/16	0.50



STANLEY® FINE TIP MARKERS

- Quick-drying, water-resistant ink marks on almost all surfaces.
- Permanent on most surfaces.
- Durable fine tip for long-lasting usage.

Product #	Contents	Color
47-324B	(72) Mini Black Fine Tip Markers - Bulk	Black
47-329B	(72) Mini Multicolor Fine Tip Marker - Bulk	Black

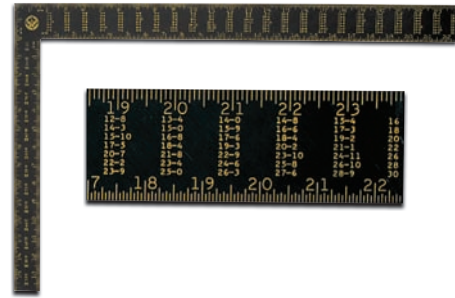




STANLEY® PREMIUM ALUMINUM RAFTER SQUARE

- Extra-thick aircraft-grade aluminum maximizes durability and maintains accurate square.
- Individually inspected for accuracy.
- Embossed graduations are painted yellow for readability in most light conditions.
- Markings include brace measures, octagon scale, board measures and rafter table.
- Surface treated to resist corrosion.

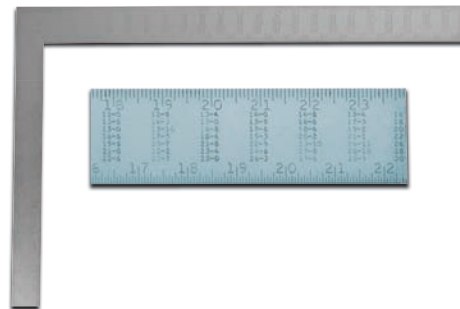
Product #	Graduation (in)	Body Length (in)	Tongue Length (in)
45-011	Face: 1/8, 1/4, 1/2 Back: 1/16, 1/8, 1/4, 1/2	24 x 2	16 x 1-1/2



STANLEY® STEEL RAFTER SQUARE

- High quality hardened steel provides durability and long life.
- Markings include Essex board measure, octagon scale, brace scale and rafter table.
- Durable, embossed graduations and figures for easy reading.
- Buffed finish with a clear lacquer that resists rust.

Product #	Graduation (in)	Body Length (in)	Tongue Length (in)
45-910	Face: 1/8, 1/4, 1/2 Back: 1/16, 1/8, 1/4, 1/2	24 x 2	16 x 1-1/2



STANLEY® ALUMINUM CARPENTER'S SQUARE

- High quality aluminum for maximum durability.
- Durable, embossed graduations and figures for easy reading.
- Provides helpful reference conversion tables such as new lumber scale, decimal equivalent table, metric conversion table, formula for squaring a foundation, 45°, 60° and 30° angle markings, volume and area formulas, wood screw gauge table, nail sizes (common and finish), quantity per pound and depth scale.
- Protective lacquer coating resists corrosion.

Product #	Graduation (in)	Body Length (in)	Tongue Length (in)
45-300	Face: 1/8; Back: 1/8	24 x 2	16 x 1-1/2



STANLEY® STEEL CARPENTER'S SQUARES

- High quality hardened steel for durability and long life.
- Embossed graduations for easy reading on face and back.
- Reverse reading scale allows for efficient measuring.
- Treated with a clear, protective finish that resists rust.

Product #	Graduation (in)	Body Length (in)	Tongue Length (in)
45-912	Face: 1/16; Back: 1/16	12 x 1-1/2	8 x 1
45-500	Face: 1/8; Back: 1/8	24 x 2	16 x 1-1/2



STANLEY® PREMIUM ADJUSTABLE QUICK SQUARE® LAYOUT TOOL

- Heavy-duty aluminum construction for durability.
- Black body with yellow graduations provides maximum readability in various light conditions.
- Features Common, Jack and Hip, and Valley scales for various applications.
- Multipurpose, adjustable design can be used as a saw guide, bevel or protractor.
- Comes with an adjustable arm.

Product #	Graduation (in)	Base Length (in)	Rule Length (in)
46-053	1/8	10-3/4	6-3/4



STANLEY® PREMIUM QUICK SQUARE® LAYOUT TOOL

- Durable aluminum construction.
- Black body with yellow graduations provides maximum readability in various light conditions.
- Multipurpose tool is ideal for use as a 0° to 90° protractor scale.
- Works well as a saw guide.

Product #	Graduation (in)	Base Length (in)	Rule Length (in)
46-071	1/8	7-1/4	6-7/8

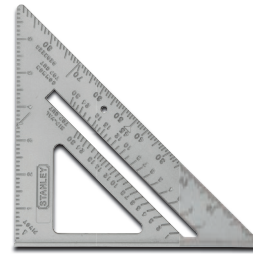




STANLEY® QUICK SQUARE® LAYOUT TOOL

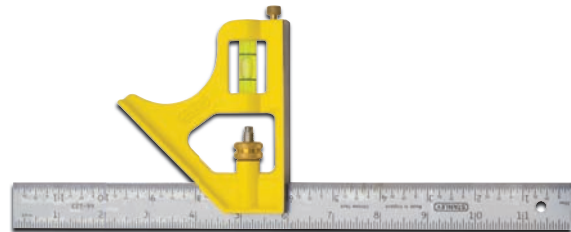
- Aluminum construction for durability.
- Multipurpose design can be used as a saw guide, for special angle measurements and cuts, or as a protractor.

Product #	Graduation	Base Length (in)	Rule Length (in)
46-067	1/8	10-1/4	6-3/4



STANLEY® PREMIUM DIE-CAST HANDLE COMBINATION SQUARES

- Durably etched, hard-chrome-plated blades are rust-resistant and made to last.
- Precision-machined working surfaces for improved accuracy.
- Built-in scriber comes in handy for surface marking.
- Easy-to-read vial.



Product #	Graduation (in)	Vials	Blade Length (in)	Blade Width (in)	Square
46-028	1/16	1 (1 Level)	12	1	45°, 90°
46-123*	1/32, 1/16, 1/8	1 (1 Level)	12	1	45°, 90°

*High-visibility yellow, die-cast handle with brass hardware for durability.

STANLEY® DIE-CAST HANDLE COMBINATION SQUARE

- Embossed hard-chrome blade is coated to resist rust.
- Built-in scriber comes in handy for surface marking.
- Easy-to-read vial.
- Durable, black die-cast metal handle.



Product #	Graduation (in)	Vials	Blade Length (in)	Blade Width (in)	Square
46-222	1/32, 1/16, 1/8	1 (1 Level)	12	1	45°, 90°

STANLEY® FATMAX® STUD SENSOR 300

- Backlit LCD screen clearly displays all of the sensor's readings, even in low light conditions.
- Wood and metal stud detection through up to 1-1/2" deep surface material.
- AC detection identifies live wires up to 2" deep.
- OnePass™ Center-Find Technology locates stud centers.
- Deep metal scan senses metal through up to 3" of material.
- Auto calibration.
- Marking channel helps improve accuracy of marking-out readings.
- Ergonomic design and soft grip buttons provide comfort and control.



Product #	Overall Length (in)	Battery Needs	Battery Type	Height (in)	Width (in)	Scan Depth (in)
FMHT77407	6-1/2	1	9V	1-1/2	3-1/2	1-1/2

STANLEY® STUD SENSOR 200

- LCD screen clearly displays all of the sensor's readings.
- Wood and metal stud detection through up to 1-1/2" deep surface material.
- AC detection identifies live wires up to 2" deep.
- OnePass™ Center-Find Technology locates stud centers.
- Marking channel helps improve accuracy of marking-out readings.
- Ergonomic design and soft grip buttons provide comfort and control.



Product #	Overall Length (in)	Battery Needs	Battery Type	Height (in)	Width (in)	Scan Depth (in)
STHT77406	5-5/8	1	9V	1-3/8	3	3/4
STHT77587	5-3/4	1	9V	1-3/8	3	1/2, 1, 1-1/2

STANLEY® STUD SENSOR 150

- Wood and metal stud detection through up to 1-1/2" below surface material.
- AC detection identifies live wires up to 2" deep.
- Sequential LEDs and audible beeps indicates reading.
- Marking channel with LED identifies target and makes marking surfaces easy and accurate.
- Ergonomic design and soft grip buttons provide comfort and control.



Product #	Overall Length (in)	Battery Needs	Battery Type	Height (in)	Width (in)	Scan Depth (in)
STHT77404	5-3/4	1	9V	1-3/8	2-7/8	1-1/2
STHT77588	7	2	AAA	1	4	1-1/2



STANLEY® STUD SENSOR 100

- Wood and metal stud detection through up to 3/4" deep surface material.
- AC detection identifies live wires up to 2" deep.
- Sequential LEDs and audible beeps indicates tool is reading surface.
- Marking channel with LED identifies target and makes marking surfaces easy and accurate.
- Ergonomic design and soft grip buttons provide comfort and control.



Product #	Overall Length (in)	Battery Needs	Battery Type	Height (in)	Width (in)	Scan Depth (in)
STHT77403	5-1/8	1	9V	1-1/2	2-1/4	3/4

STANLEY® STUD SENSOR 50

- Detects wood/metal studs up to a 3/4" depth.
- Visual indicators on face of stud sensor for easy readability.
- LED display indicates stud edge.



Product #	Overall Length (in)	Battery Needs	Battery Type	Scan Depth (in)
77-050	5-1/4	1	9V	3/4

STANLEY® TLM65 LASER DISTANCE MEASURER

- Accuracy +/- 1/8" for consistent and reliable measurements.
- Simple 2-button design for intuitive point and click measuring.
- Measures distance, calculates area and volume: Automatic calculations make job estimates quick and easy. Instantly calculates square footage of a room or space.
- Continuous measurement to help find target distance quickly and easily.



Product #	Accuracy (in)	Battery Needs	Battery Type	Measuring Range (ft)
STHT77032	+/- 1/8	2	AAA	65

STANLEY® KNIFE & BLADE SELECTION GUIDE

KNIVES		FEATURES			BLADES											
		Quick Change	Blade Storage	Clamping	No. 1992 Drywall 11-937	No. 1991 Paper 11-938	Carton, Rnd Pnt 11-987	Carpet Hvy Dty 11-530	1991®, Reg Dty 11-911	1992®, Hvy Dty 11-921	Extra Hvy Dty 11-931	Safety 11-917	Safety 11-914	Sm Hook 11-961	1996™ Lg Hook 11-983	
Retractable	FATMAX® 10-789	X	X		X	X	X		X	X	X			X	X	
	FATMAX® Retractable 10-778	X	X	X	X	X	X		X	X	X			X	X	
	InstantChange™ 10-788	X	X		X	X	X		X	X	X			X	X	
	Dynagrip® 10-779		X		X	X	X		X	X				X	X	
	Quick Change 10-499	X	X		X	X	X		X	X				X	X	
	Swivel-Lock® 10-989	X	X		X	X	X		X	X				X	X	
	Ergonomic All-Metal Retractable Utility Knife 10-707	X	X		X	X	X		X	X				X	X	
	Retractable Utility 10-079		X		X	X	X		X	X				X	X	
	Retractable Utility Knife STHT10430	X	X							X						
	Retractable Utility Knife STHT10479	X	X							X						
	Retractable Utility Knife STHT10432	X	X							X						
	High Visibility 10-179		X		X	X	X		X	X				X	X	
	Classic 99® 10-099		X		X	X	X		X	X				X	X	
	Homeowner's 10-175		X		X	X	X		X	X				X	X	
Fixed Blade	FATMAX® Fixed Blade Utility Knife 10-780	X	X	X	X	X	X		X	X	X			X	X	
	Swivel-Lock® 10-399	X	X		X	X	X		X	X	X			X	X	
	Classic 199® 10-209		X		X	X	X		X	X	X			X	X	
	299® Fixed Blade Interlock 10-299		X		X	X	X		X	X	X			X	X	
Specialty	Retractable Carpet Knife 10-525	X	X	X				X								
	Linoleum Flooring Knife 10-509															
Safety	Self-Retracting Safety 10-189C		X		X	X	X		X	X	X		X	X	X	
	Folding Safety Knife 10-784											X				
Pocket/Hobby/Craft	Folding Fixed Blade Utility Knife 10-855	X			X	X	X		X	X				X	X	
	Compact Folding Fixed Blade Utility Knife STHT10424	X								X						
	Folding Pocket Knife 10-049															
	Metal Mitey-Knife® 10-239		X													
Snap-off	FATMAX® Snap-Off Knife 9mm 10-475		X	X												
	FATMAX® Snap-Off Knife 18mm 10-481		X	X												
	9mm Quick-Point™ 10-150															
	18mm Standard Snap-Off 10-280															
	18mm Quick-Point™ Cutter 10-143P															

STANLEY® FATMAX® EXO-CHANGE™ KNIVES

- Magnetic and exposed slider provides fast manual blade change.
- Magnet in slider.
- Easy access blade storage allows for easy blade access and quick changeover.
- Quick and easy debris removal from the slider.
- Soft touch grip reduces slipping.



Product #	Type	# of Blades	Overall Length (in)	Body Color
FMHT10288	Retractable	5	7-1/2	Gray/Yellow/Black
FMHT10289	Folding Retractable	5	7-1/2	Gray/Yellow/Black



STANLEY® FATMAX® RETRACTABLE TWIN BLADE KNIFE

- Two knives in one – twin blade design allows the user to alternate between two blades without carrying more than one knife.
- InstantChange™ feature allows the user to replace dull blades in seconds.
- Easy access blade storage holds up to 9 blades for fast and easy blade changes.
- Safety mechanism - Interlocking blade sliders ensure only one blade is extended at a time.
- Rubber comfort grip minimizes fatigue and reduces slippage.
- Knife includes 2 straight and 2 hook blades.
- Works with most standard utility blades.



Product #	# of Blades	Overall Length (in)	Body Color
10-789	4	6-7/8	Gray/Black

STANLEY® FATMAX® RETRACTABLE UTILITY KNIFE

- Designed for repetitive heavy-duty cutting applications.
- Retractable blade offers variable cut depth.
- Push button for instant blade change - no tools required.
- Thermoplastic Rubber (TPR) soft touch panels grips for better control and fewer slips.
- Thumb pad and ergonomically designed cutting angle for more comfortable use.
- Blade storage holds up to 5 blades.
- Works with most standard utility blades.



Product #	# of Blades	Overall Length (in)	Body Color
10-778	5	6-5/8	Yellow/Black

STANLEY® RETRACTABLE UTILITY KNIVES

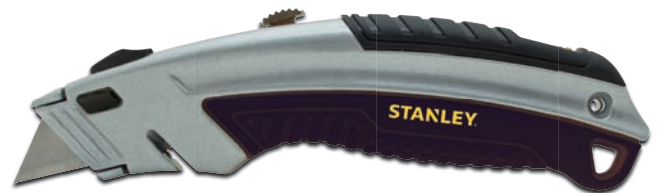
- All metal body for durability.
- Push button, tool free blade change.
- Includes 3 blades in captive blade storage.
- Offset knife nose to guide easy blade change.
- Belt clip for easy pocket or belt storage.



Product #	# of Blades	Overall Length (in)	Body Color
STHT10430	3	6-3/4	Yellow/Black
STHT10479	10	6-3/4	Yellow/Black
STHT10432	1	5-1/2	Yellow/Black

STANLEY® INSTANTCHANGE™ RETRACTABLE BLADE UTILITY KNIFE

- Durable, all-metal knife body construction.
- Quick one-button blade change - no tools required.
- Thumb pad and ergonomically designed cutting angle for more comfortable use.
- Interlocking nose design helps secure blade and helps prevent body separation.
- Integrated string cutter when blade is retracted.
- Swing-out blade storage for easy blade access.
- Holds 10 blades.
- Blades included (11-921): 3.
- Retractable Blade Positions: 3.
- Works with most standard utility blades.



Product #	# of Blades	Overall Length (in)	Body Color
10-788	3	6-1/2	Gray/Black

STANLEY® QUICKCHANGE™ RETRACTABLE BLADE UTILITY KNIFE

- Durable, all-metal knife body construction.
- Quick one-button blade change - no tools required.
- Interlocking nose design helps secure blade and helps prevent body separation.
- Integrated string cutter when blade is retracted.
- Comes with hang-hole for adding a wrist strap or lanyard.
- Swing-out blade storage for easy blade access.
- Blades Included (11-921): 3.
- Retractable Blade Positions: 3.
- Works with most standard utility blades.



Product #	# of Blades	Overall Length (in)	Body Color
10-499	3	6-3/8	Gray

STANLEY® SWIVEL-LOCK® RETRACTABLE BLADE UTILITY KNIFE

- Durable, all-metal knife body construction.
- Knife body swivels open for quick blade change - no tools required.
- Magnetic nose holds blade in place for stability during blade change.
- Interlocking nose design helps secure blade and helps prevent body separation.
- Blades Included (11-921): 3.
- Retractable Blade Positions: 3.
- Works with most standard utility blades.



Product #	# of Blades	Overall Length (in)	Body Color
10-989	3	7	Yellow

STANLEY® ERGONOMIC ALL-METAL RETRACTABLE BLADE UTILITY KNIFE

- No tools required – thumb screw stays attached to knife and allows for easy blade change.
- Durable, simple and comfortable shape.
- Narrow nose ideal for accurate cutting applications.
- Robust all-metal construction.
- Comfortable thumb rest.
- Blade storage in handle
- Works with most standard utility blades.



Product #	# of Blades	Overall Length (in)	Body Color
10-707	3	7-1/4	Yellow

STANLEY® ALL-METAL RETRACTABLE BLADE KNIVES

- Patented interlocking nose to hold blade securely.
- Three-position, retractable blade.
- Contoured handle with diagonal ribs for a slip-resistant grip.
- Blade storage in handle.
- Blades included (11-921): 3.
- Works with most standard utility blades.



Product #	# of Blades	Overall Length (in)	Body Color
10-079	3	5-7/8	Gray
10-179	3	5-7/8	Hi-Visibility Green



STANLEY® CLASSIC 99® RETRACTABLE BLADE UTILITY KNIVES

- Durable, all-metal knife body construction.
- Machine screw firmly holds knife body together - Screwdriver required for blade change.
- Interlocking nose design helps secure blade and helps prevent body separation.
- Blades included (11-921): 3.
- Retractable Blade Positions: 3.
- Works with most standard utility blades.



Product #	# of Blades	Overall Length (in)	Body Color
10-099	3	6	Gray
10-099U	3	6	Unpainted

STANLEY® HOMEOWNER'S RETRACTABLE BLADE UTILITY KNIFE

- Lightweight, versatile plastic knife body construction.
- For light-duty use only.
- Machine screw firmly holds knife body together - Screwdriver required for blade change.
- Comes with hang-hole for adding a wrist strap or lanyard.
- Blades Included (11-921): 1.
- Retractable Blade Positions: 3.
- Works with most standard utility blades.



Product #	# of Blades	Overall Length (in)	Body Color
10-175	1	6	Gray

STANLEY® DYNAGRIP® RETRACTABLE BLADE UTILITY KNIFE

- Durable, all-metal knife body construction.
- Machine screw firmly holds knife body together - Screwdriver required for blade change.
- Contoured handle with bi-material grip for slip-resistance.
- Interlocking nose design helps secure blade and helps prevent body separation.
- Comes with hang-hole for adding a wrist strap or lanyard.
- Blades Included (11-921): 3.
- Retractable Blade Positions: 3.
- Works with most standard utility blades.



Product #	# of Blades	Overall Length (in)	Body Color
10-779	3	5-3/8	Yellow/Black

STANLEY® RETRACTABLE BLADE CARPET KNIFE

- Heavy-duty all-metal knife body construction.
- Knife body swivels open for quick blade change - no tools required.
- Retractable blade controls depth of cut.



Product #	# of Blades	Blade Storage Capacity	Overall Length (in)	Body Color
10-525	3	10 regular-duty 0.015" blades	6-1/2	Gray

STANLEY® FATMAX® FIXED BLADE UTILITY KNIFE

- Specially designed for repetitive cutting applications.
- Magnetic nose holds blade in place for stability during blade change.
- Blade clamp to reduce blade wobble for added control.
- Steel wear plate for longer life and reduced wear on the nose of the knife.
- Blade storage holds up to 5 blades.
- Thermoplastic Rubber (TPR) soft touch panels and grips for better control and fewer slips.
- Thumb pad and ergonomically designed cutting angle for more comfortable use.
- Supplied with 5 FATMAX® blades.
- Works with most standard utility blades.



Product #	# of Blades	Overall Length (in)	Body Color
10-780	5	6-1/4	Yellow/Black

STANLEY® SWIVEL-LOCK® FIXED BLADE UTILITY KNIFE

- Durable, all-metal knife body construction.
- Knife body swivels open for quick blade change - no tools required.
- Interlocking nose design helps secure blade and helps prevent body separation.
- Blades Included (11-921): 3.
- Fixed Blade Positions: 1.
- Works with most standard utility blades.



Product #	# of Blades	Overall Length (in)	Body Color
10-399	3	6	Gray

STANLEY® 299® FIXED BLADE UTILITY KNIFE

- Durable, all-metal knife body construction.
- Machine screw firmly holds knife body together - Screwdriver required for blade change.
- Contoured handle and textured, die-cast body for slip-resistance.
- Interlocking nose design helps secure blade and helps prevent body separation.
- Comes with hang-hole for adding a wrist strap or lanyard.
- Blades Included (11-921): 1.
- Fixed Blade Positions: 2.
- Works with most standard utility blades.



Product #	# of Blades	Overall Length (in)	Body Color
10-299	1	5-3/8	Gray

STANLEY® CLASSIC 199® FIXED BLADE UTILITY KNIFE - ZINC BODY

- Durable, all-metal zinc knife body construction.
- Machine screw firmly holds knife body together - Screwdriver required for blade change.
- Textured, die-cast body for better slip-resistance.
- Comes with hang-hole for adding a wrist strap or lanyard.
- Dual blade locator nub allows more of the blade to extend from the knife.
- Blades included (11-921): 3.
- Fixed Blade Positions: 1.
- Blade storage in handle.
- Works with most standard utility blades.



Product #	# of Blades	Overall Length (in)	Body Color
10-209	3	5-1/2	Gray

Not intended for use in industrial manufacturing applications.



STANLEY® LINOLEUM FLOORING KNIFE

- Taper ground cutlery steel blade permanently fastened to handle.
- Comfortable hardwood handle.
- Cuts and trims vinyl or linoleum floor covering, roofing material, and similar materials.

Product #	Blade Length (in)	Handle Length (in)	Overall Length (in)
10-509	3	4-1/2	7-1/2



STANLEY® FIXED BLADE FOLDING UTILITY KNIFE

- Wooden handle.
- Tool free blade change.
- Belt clip for easy pocket or belt storage.

Product #	# of Blades	Overall Length (in)	Length Folded (in)	Body Color
10-073	1	6	4-1/4	Wood



STANLEY® FATMAX® FIXED BLADE FOLDING KNIFE

- Ergonomic with integrated blade storage.
- Tape cutter for use when knife is closed.
- Blades show through knife allowing user to see how many blades are stored (stores 3 blades – includes 1 blade).

Product #	# of Blades	Overall Length (in)	Length Folded (in)	Body Color
FMHT10827	1	6-7/32	4-5/32	Yellow



STANLEY® FOLDING FIXED BLADE UTILITY KNIFE

- Foldable, compact design fits easily into a pocket.
- Quick change fixed blade - thumb stud for easy release.
- One-hand open and close using the push lever handle.
- Aluminum design, lightweight and durable.
- Stainless steel belt clip.
- Works with most standard utility blades, except 11-931.

Product #	# of Blades	Overall Length (in)	Body Color
10-855	1	5-3/4	Black



STANLEY® COMPACT FIXED BLADE FOLDING UTILITY KNIFE

- Compact size for versatility.
- Push button blade change for quick blade change.
- Belt clip for easy pocket or belt storage.
- Offset knife nose to guide easy blade change.
- Belt clip for easy pocket or belt storage.



Product #	# of Blades	Overall Length (in)	Body Color
STHT10424	1	5-1/2	Yellow/Black

STANLEY® FOLDING KNIFE

- Durable nylon handle.
- InstantChange™ blade mechanism.
- One-hand opening operation.
- Folds into convenient carrying size.
- Belt clip for easy carrying.



Product #	# of Blades	Overall Length (in)	Length Folded (in)	Body Color
STHT10169	1	6	4	Black

STANLEY® RETRACTABLE FOLDING POCKET KNIFE

- Folds for safe and convenient storage.
- Push button for fast and easy blade changes.
- Retractable blade with variable cutting depths for flexibility.



Product #	Folded Length (in)	Overall Length (in)	Body Color
10-823	3-1/2	6	Green

STANLEY® QUICKSLIDE™ UTILITY KNIFE

- Renovated design: slimmer and more compact*.
- Includes carabineer and bottle opener.
- Easy blade change & slide operation for quick and easy loading.
- Simple, die-cast design.



Product #	# of Blades	Overall Length (in)	Body Color
STHT10828	1	4-3/4	Gray

*Compared to previous model STANLEY 10-810

STANLEY® FOLDING POCKET KNIFE

- Powder-coated, epoxy handle.
- Blade folds into handle for safe storage.
- Replaceable stainless-steel blade.
- Safety blade lock.
- Blades included (11-040): 1.



Product #	# of Blades	Overall Length (in)	Body Color
10-049	1	4-1/4	Gray



STANLEY® SELF-RETRACTING SAFETY BLADE UTILITY KNIVES

- Durable, all-metal knife body construction.
- Machine screw firmly holds knife body together - Screwdriver required for blade change.
- Contoured handle and textured, die-cast body for slip-resistance.
- Interlocking nose design helps secure blade and helps prevent body separation.
- Comes with hang-hole for adding a wrist strap or lanyard.
- Auto-retracting blade: spring-loaded. Retracts when slide button is released.
- Blades included (11-987): 1.
- Works with most standard utility blades.



Product #	# of Blades	Overall Length (in)	Body Color
10-189C	1	5-7/8	Orange
10-189P	1	5-7/8	Unpainted

STANLEY® SAFETY KNIFE

- Heavy-duty spring activated blade automatically retracts the instant the blade loses contact with the cutting surface.
- Accepts both STANLEY® and OLFA® safety blades (round tip and regular).
- Ergonomic slip-resistant handle.
- Chemical resistant handle.
- Durable, smooth steel barrel.
- Blades included (11-921): 1
- Replacement blades: 11-921.



Product #	# of Blades	Blade Length (in)	Overall Length (in)	Body Color
STHT10193	1	2-29/64	6-1/2	Yellow/Black

STANLEY® FATMAX® SAFETY KNIFE

- Auto-retracting blade retracts when contact with cutting surface is lost (even if thumb is holding the slider button forward).
- Left or right handed use. Quick blade change button can be pressed from both sides of the knife.
- Replaceable shrink wrap cutter pivots up and down, sits in a depression flush with the knife, replaceable piece also an individual unit.
- Accepts any standard utility blade.
- Bi-material grip for added comfort and control.
- Tape splitter at the base of handle.
- Lanyard hang hole for easy tethering, transportation and storage.



Product #	# of Blades	Overall Length (in)	Body Color
FMHT10242	6	6-19/32	Gray/Red/Black

STANLEY® FOLDING POCKET SAFETY KNIFE

- Self-retracting blade is only exposed when slider button is manually held forward.
- Folding capability. "Cool" factor added to safety knife category with folding knife option.
- Accepts any standard utility blade.
- High visibility blade change window allows for safer blade change than traditional front loading knives.
- Lanyard hang hole for easy tethering, transportation and storage.



Product #	# of Blades	Overall Length (in)	Folded Length (in)	Body Color
STHT10243	1	6-13/32	4	Red

OLFA® is a registered trademark of OLFA® Corporation.

STANLEY® 12-IN-1 MULTI-TOOL WITH HOLSTER

- Stainless steel construction.
- High quality nylon holster.

Product #	Overall Length (in)	Contents
84-519K	6-1/2	(1) Phillips Screwdriver (3) Standard Screwdrivers: 1/4, 5/16, 1/8" (1) Long Nose Pliers (1) Curve Jaw Pliers (1) Wire Cutter (1) Saw (1) Small Knife (1) Large Knife (1) Bottle Opener (1) File



STANLEY® FATMAX® SNAP-OFF KNIFE

- Cast aluminum body and stainless steel blade channel for durability.
- Slim design for control, precision cutting, and easy storage.
- Auto locking blade slider.



Product #	# of Blades	Points Per Blade	Size (mm)	Overall Length (in)	Body Color
10-431	1	7	25	5-1/4	Aluminum

STANLEY® FATMAX® SNAP-OFF KNIFE

- Stainless-steel barrel is durable and rust-resistant.
- Comfortable bi-material slider with soft grip.
- Removable blade snapper for removal of a worn segment.
- Thumb dial clamps down on blade to minimize blade movement for control.
- Instant blade release functionality for quick blade changes.



Product #	# of Blades	Points Per Blade	Size (mm)	Overall Length (in)	Body Color
10-481	6	8	18	7	Yellow/Black



STANLEY® QUICK-POINT™ SNAP-OFF KNIFE

- High impact ABS construction.
- Smooth slider mechanism features an audible "click" and is self-locking for security.
- Removable blade snapper included in cap of knife.



Product #	# of Blades	Points Per Blade	Size (mm)	Overall Length (in)	Body Color
10-150	1	13	9	5-1/8	Yellow/Black

STANLEY® QUICK-POINT™ STANDARD SNAP-OFF KNIFE

- High impact ABS construction.
- Rigid stainless steel barrel provides smooth action and corrosion resistance.
- Smooth slider mechanism features an audible "click" and is self-locking for security.
- Removable blade snapper included in cap of knife.
- Comes with hang-hole for adding a wrist strap or lanyard.



Product #	# of Blades	Points Per Blade	Size (mm)	Overall Length (in)	Body Color
10-280	2	8	18	6-3/4	Yellow/Black

STANLEY® QUICK-POINT™ SNAP-OFF KNIFE

- Light-duty, retractable cutter with Quick-Point™ snap-off blades.
- Blade sections snap off, providing a fresh, sharp cutting point.
- Hang hole for storage or lanyard.



Product #	# of Blades	Points Per Blade	Size (mm)	Overall Length (in)	Body Color
10-143P	1	8	18	6	Yellow/Black

STANLEY® FATMAX® CARBIDE HEAVY-DUTY UTILITY BLADES

- Blade stays sharper 5X* longer.
- Steel body allows flexibility to help prevent breakage.
- Laser deposited carbide lines the blade edge delivering a long lasting blade.

Product #	# of Blades	Blade Length (in)	Blade Thickness (in)
11-800	5	2-7/16	0.024
11-800T	10	2-7/16	0.024
11-800L	50	2-7/16	0.024

*Blade stays sharper 5X longer than traditional competitive blades.



STANLEY® FATMAX® UTILITY BLADES

- The precision grinding of the cutting bevel angles and the improved honing on cutting edge angles make this blade - up to +35% sharper*.
- Specially heat-treated for a more flexible blade - up to +20% stronger*.
- Induction hardened edge - up to +75% longer cutting life*.
- Versatile cutting applications - drywall, carpet, roofing felt, house wrap, tar paper, insulation.

Product #	# of Blades	Blade Length (in)	Blade Thickness (in)
11-700L	50	2-7/16	0.024
11-700A	100	2-7/16	0.024

*Based on average values compared with STANLEY® 1992® blades.



STANLEY® DRYWALL ASB UTILITY BLADE

- Edge is engineered to easily cut abrasive drywall material.
- Blade made of high carbon steel.
- S3 technology double hardens the blade edge for increased* cutting life.
- 100% longer life on average compared to STANLEY® 11-921 Heavy-Duty Blade, resulting in far fewer blade changes.
- Cuts and scores drywall, ceiling tile, wallboard and similar materials.
- "DRYWALL" call-out is laser etched on blade to help prevent mixing with standard blades.

Product #	# of Blades	Blade Length (in)	Blade Thickness (in)
11-937L	50	2-7/16	0.024

*Based on average values compared with STANLEY® 1992® blades.





STANLEY® 1991® EXTRA HEAVY-DUTY UTILITY BLADES

- Blade made of high carbon steel.
- Precision honed edge.
- Cuts thick, dense materials.
- Designed for use in fixed blade knives only.

Product #	# of Blades	Blade Length (in)	Blade Thickness (in)
11-931D	70	2-7/16	0.035
11-931A	100	2-7/16	0.035



STANLEY® 1992® HEAVY-DUTY UTILITY BLADES

- Blade made of high carbon steel.
- Precision honed edge.
- Blade is made for general purpose cutting.
- Fits most standard utility knives.

Product #	# of Blades	Blade Length (in)	Blade Thickness (in)
11-921	5	2-7/16	0.024
11-921T	10	2-7/16	0.024
11-921L	50	2-7/16	0.024
11-921A	100	2-7/16	0.024
11-921B	400	2-7/16	0.024
11-921Z	500	2-7/16	0.024



STANLEY® ROUND-POINT UTILITY BLADES

- Rounded edges help reduce risk of accidental cuts.
- Blade is used in applications where safety is a concern and for preventing damage to carton contents when opening boxes.
- Blade made of high carbon steel.
- Fits most standard utility knives.

Product #	# of Blades	Blade Length (in)	Blade Thickness (in)
11-987	5	2-13/64	0.024
11-988	100	2-13/64	0.024



STANLEY® 1991® REGULAR-DUTY UTILITY BLADE

- Blade made of high carbon steel.
- Precision honed edge.
- Blade is made for light sheet materials, paper, and cardboard.
- Fits most standard utility knives.

Product #	# of Blades	Blade Length (in)	Blade Thickness (in)
11-911A	100	1-31/32	0.017



STANLEY® LARGE HOOK BLADES

- Blade made of high carbon steel.
- Blade shape helps prevent damage to surface beneath the material being cut.
- Blade is used for cutting and trimming roofing materials, linoleum, carpet, fabric and sheet materials.

Product #	# of Blades	Blade Length (in)	Blade Thickness (in)
11-983	5	1-7/8	0.024
11-983A	100	1-7/8	0.024
11-984	100	1-7/8	0.024



STANLEY® REGULAR HOOK BLADES

- Blade shape helps prevent damage to surface beneath the material being cut.
- Blade is used for cutting and trimming roofing materials, linoleum, carpet, fabric and sheet materials.
- Blade made of high carbon steel.
- Fits most standard utility knives.

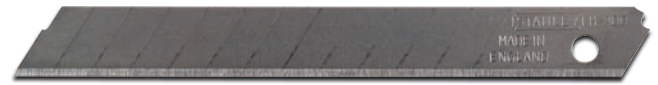
Product #	# of Blades	Blade Length (in)	Blade Thickness (in)
11-961	5	2-1/16	0.024
11-961A	100	2-1/16	0.024



STANLEY® QUICK-POINT™ SNAP-OFF BLADES

- Blade made of high carbon steel.
- Blade sections snap off providing fresh, sharp cutting points.

Product #	# of Blades	Points Per Blade	Size (mm)	Blade Length (in)	Blade Thickness (in)
11-300	3	13	9	3-1/4	0.017
11-301	3	8	18	4-1/4	0.020
11-301L	50	8	18	4-1/4	0.020
11-301T	10	8	18	4-1/4	0.020



STANLEY® SHEEPFOOT BLADE

- Sheepfoot-style blade made of cutlery stainless steel.
- Blade used for heavy-duty cutting and carving.
- For use in 10-049.

Product #	# of Blades	Blade Length (in)	Blade Thickness (in)
11-040	1	2-9/16	0.040





STANLEY® UTILITY BLADE

- Utility blade made of cutlery stainless steel.
- Blade used for fine cutting.
- For use in 10-049.

Product #	# of Blades	Blade Length (in)	Blade Thickness (in)
11-041	1	2-9/16	0.040



STANLEY® SINGLE-EDGE RAZOR BLADES

- Blade made of high carbon steel with steel backing.
- Blade fits most standard razor blade tools.

Product #	# of Blades	Blade Length (in)	Blade Thickness (in)
28-510	10	1-1/2	0.009
11-515	100	1-1/2	0.009



STANLEY® BLADE DISPOSAL CONTAINERS

- High impact, puncture resistant container.
- Snap-on lid locks tight for safety and is tethered to the container.
- Container can be placed on a flat surface or fixed to a wall with the metal rack.



Product #	Description	Length (in)	Width (in)	Height (in)
11-080	Blade Disposal Container	-	-	-
11-081	Blade Disposal Container with Metal Wire Rack	-	-	-

OLFA® is a registered trademark of OLFA® Corporation.



WARNING: WORK SAFELY WITH TOOLS. WEAR SAFETY GOGGLES.

STANLEY® FATMAX® BOX SAW

- Blade is 15% thicker than conventional saws for straighter cuts with less binding.
- SharpTooth™ Saw Technology uses three cutting surfaces to cut 50% faster than conventional STANLEY® hand saws.
- Induction-hardened teeth stay sharp up to 5X longer than standard teeth.
- Thick, ergonomically designed grip resists slipping and adds comfort.
- Back of saw can be used to mark 45° and 90° angles.



Product #	Blade Length (in)	Points Per Inch	Teeth Per Inch
20-045	15	9	8

STANLEY® SHARPTOOTH® CUSHION GRIP SAW

- SharpTooth™ saw technology uses three cutting surfaces to cut 50% faster than conventional STANLEY® hand saws.
- Induction-hardened teeth stay sharp up to 5X longer than standard teeth.
- Ergonomically designed one-piece handle.



Product #	Blade Length (in)	Points Per Inch	Teeth Per Inch
20-526	15	12	11

STANLEY® HEAVY-DUTY SHARPTOOTH® WOOD HANDLE SAW

- Aggressive multipurpose saw for fast cutting.
- SharpTooth™ Saw Technology uses three cutting surfaces to cut 50% faster than conventional STANLEY® hand saws.
- Induction-hardened teeth stay sharp up to 5X longer than standard teeth.
- Hardwood handle provides comfort and control.



Product #	Blade Length (in)	Points Per Inch	Teeth Per Inch
15-087	20	9	8

STANLEY® FINISH CUT SHARPTOOTH® SAW

- Multipurpose saw for a High quality finish.
- SharpTooth™ Saw Technology uses three cutting surfaces to cut 50% faster than conventional STANLEY® Hand Saws.
- Induction-hardened teeth stay sharp up to 5X longer than standard teeth.
- Hardwood handle provides comfort and control.



Product #	Blade Length (in)	Points Per Inch	Teeth Per Inch
20-065	26	12	11



STANLEY® SHARPTOOTH® WOOD HANDLE SAW

- Aggressive three-sided tooth design cuts 50% faster than conventional hand saws.
- Teeth can be resharpened.
- Select hardwood handle provides comfort and control.
- Back of saw can be used to mark 45° and 90° angles.



Product #	Blade Length (in)	Points Per Inch	Teeth Per Inch
15-334	15	9	8

STANLEY® SHARPTOOTH® TOOL BOX SAW

- Fast cuts on push and pull strokes.
- Precision ground, razor-sharp teeth.
- Molded plastic handle provides comfortable grip.
- Back of saw can be used to mark 45° and 90° angles.



Product #	Blade Length (in)	Points Per Inch	Teeth Per Inch
15-579	15	9	8

STANLEY® GENERAL PURPOSE SHARPTOOTH® SAW

- Aggressive multipurpose saw with induction-hardened teeth.
- Fast cuts on push and pull strokes.
- Contoured sturdy handle designed for comfort and control.
- Handle offers a square/miter feature with 45° and 90° angles.



Product #	Blade Length (in)	Points Per Inch	Teeth Per Inch
15-726	26	8	8

STANLEY® FATMAX® BACK SAW

- Designed for precise cutting including dovetails, miters and tenons.
- Used specifically for fine finish, plywood and hardwoods.
- Heavy-duty screws for secure blade-to-handle assembly.
- Solid, one-piece bi-material handle delivers durability and comfort.



Product #	Blade Length (in)	Points Per Inch	Teeth Per Inch
17-202	14	14	13

STANLEY® FATMAX® COPING SAW

- Hardened tempered blade provides clean, controlled cutting action.
- Ergonomically designed cushion grip handle for comfort.

Product #	Blade Length (in)	Throat Depth (in)	Points Per Inch	Teeth Per Inch
15-104	6-1/2	4-3/4	16	15



STANLEY® FATMAX® HIGH-TENSION HACKSAW

- Durable, one-piece body is designed for ultra-high tension of 330 lbs
- Pre-tensioning mechanism holds blade in place for quick and easy blade changes.
- Thumb-dial adjustable tension mechanism allows for tension memory.
- Large cutting capacity – up to 4-3/4" throat depth for extra-deep cutting.
- Power load sliding tension delivers leverage when increasing tension and control when releasing blade.
- Contoured handle and front thumb grip are ergonomically designed for control.
- Blade can be positioned at 45° or 90° cutting angle.
- Long reach cutting capability.
- Removable file inside frame for finishing up surfaces after cutting.
- Blade storage inside frame, up to 3 blades.
- Accepts 12" blades only.



Product #	Blade Length (in)	Throat Depth (in)
20-531	12	4-3/4

STANLEY® SOLID FRAME HIGH-TENSION HACKSAW

- 4.375" cutting depth.
- 225 lbs blade tension.
- 90° and 180° adjustable blade angles allowing flush cuts.
- Large, comfortable tension knob.
- Robust all metal frame.
- Full-grip handle helps protect knuckles.

Product #	Blade Length (in)	Throat Depth (in)
STHT20138	12	4-3/8





STANLEY® FATMAX® JAB SAW

- Jab saw blade made of steel.
- Lacquered blade for corrosion protection.
- SharpTooth™ Saw Technology uses an aggressive three-sided tooth design that gives three cutting surfaces to cut 50% faster than conventional STANLEY® handsaws.
- Sharpened tip to easily punch through drywall.
- Ergonomically designed handle is made out of high impact polypropylene and a textured rubber grip over mold to provide comfort and a slip-resistant grip.



Product #	Blade Length (in)	Points Per Inch	Teeth Per Inch
20-556	6	9	8

STANLEY® CUSHION GRIP JAB SAW

- Fully hardened, tempered blade is designed for long cutting life.
- Sharp tip makes plunge cuts easy.
- Teeth are engineered to cut fast and prevent clogging.
- Ergonomically designed curved handle is cushioned for comfort.



Product #	Blade Length (in)	Points Per Inch	Teeth Per Inch
15-556	6	9	8

STANLEY® WOOD HANDLE JAB SAW

- Designed especially for making cuts in plasterboard.
- Self-starting point sharpened for plunge cuts.
- Hardwood handle for durability and comfort.
- Blade is epoxy-bonded and ferruled to the handle for a connection that is three times as durable as non-epoxy bonded blades.



Product #	Blade Length (in)	Points Per Inch	Teeth Per Inch
15-206	6	9	8

STANLEY® TUBULAR HIGH-TENSION HACKSAW

- 4.75" cutting depth.
- 300 lbs blade tension.
- 45° and 90° adjustable blade angles allowing flush cuts.
- Blade storage holds up to 8 blades.
- Bi-material handle for comfort.
- Large, comfortable tension knob for quick and easy blade change.
- Robust tubular metal frame.
- Long reach cutting capability.

Product #	Blade Length (in)	Throat Depth (in)
STHT20140	12	4



STANLEY® HIGH-TENSION HACKSAW

- Heavy-duty metal frame design holds blade up to 32,000 psi.
- Blade can be positioned either at a 45° or 90° angle.
- Blade storage is integrated into frame.
- Quick release blade changing mechanism in handle maintains tension setting.
- "T" rod allows user to adjust tension on blade within handle.

Product #	Blade Length (in)	Throat Depth (in)
15-113	12	3-7/8



STANLEY® RUBBER GRIP SOLID FRAME HACKSAW

- 4.375" cutting depth.
- 225 lbs blade tension.
- 90° and 180° adjustable blade angles allowing flush cuts.
- Large, comfortable tension knob.
- Robust all metal frame.
- Rubber grip handle.

Product #	Blade Length (in)	Throat Depth (in)
STHT20139L	12	4-3/8





STANLEY® METAL MINI-HACK® UTILITY SAW

- Cast aluminum handle is lightweight, comfortable and durable.
- Handle covers blade to protect end user's hand.
- High-performance blade included: 1.



Product #	Blade Length (in)
15-809	10

STANLEY® PLASTIC MINI-HACK® SAW

- Ergonomically designed grip with thumb rest for maximum comfort.
- Handle covers blade to protect end users hand.
- Durable, high impact polypropylene body.
- Carbon steel hacksaw blade (10 in x 24 TPI) included: 1.



Product #	Blade Length (in)
20-807	10

STANLEY® BI-METAL HACKSAW BLADE

- Combines the flexibility of carbon steel backs with the cutting performance of high-speed steel cutting edge.
- Coated blade for corrosion protection.
- Cuts most metals including unhardened tool steel and stainless steel.



Product #	# of Blades	Blade Length (in)	Points Per Inch	Teeth Per Inch
15-612	10	12	19	18

STANLEY® CLAMPING MITER BOXES

- Made of lightweight, high impact polypropylene.
- Cam-shaped pins twist and lock with honeycomb base to secure work for accurate cuts.
- Cuts miters on 45° and 90°, face angle 45°, and all new 22-1/2° angle for octagonal shapes.
- Miter box has storage compartments to hold cam pins and pencils.
- Large design for increased cutting capacity.



Product #	Type	Blade Length (in)	Points Per Inch	Teeth Per Inch
20-112	Miter Box	–	–	–
20-600	Miter Box with Saw	14	13	12

STANLEY® HAMMER SELECTION GUIDE

HAMMERS	Handle	Unique Feature	TYPE			FACE		WEIGHT OUNCES									
			Framing	Rip	Curve	Checkered	Smooth	7	13	14	16	17	20	22	24	28	
FATMAX® Graphite	Jacketed Graphite	Increased Durability versus Previous Model	X	X		X									X		
FATMAX® Over-strike	Hickory	Protection	X	X		X									X		
FATMAX® Anti-Vibe® Hammer	One-Piece Steel	Larger Strike Face	X	X	X	X	X				X		X	X			X
One-Piece Steel	One-Piece Steel	—		X	X		X				X		X				
Wood	Wood	—		X	X		X	X			X						

TYPE	DESCRIPTION
Framing Hammers	Used for Framing and Heavy-Duty Construction
Rip Claw Hammers	Used for Heavy-Duty Carpentry
Curve Claw Hammers	Used for Light-Duty Carpentry

SPECIALTY HAMMERS	DESCRIPTION	HANDLE				
		Anti-Vibe®	Jacketed Graphite	Jacketed Fiberglass	Hickory	Compo-Cast®
Ball Pein	Striking chisels and punches, riveting and shaping or bending metal		X		X	
Engineer	Striking wood, metal or stone	X		X		
Blacksmith	Striking unhardened metals	X		X		
Drilling	Striking chisels and punches, star drills and unhardened nails in confined spaces	X				
Drywall	Installing drywall or gypsum board	X				
Brick	Cutting/setting brick, stone and masonry	X			X	
Carpenter's	Cutting/splitting wood, driving stakes and unhardened nails	X				
Shingler's	Installing shingles and other roofing material	X				
Tack	Holding and driving tacks and brads				X	
Soft-Face	Soft face helps minimize marring and surface damage				X	X
Rubber Mallet	Rubber head face helps minimize marring and surface damage				X	
Compo-Cast®	Dead blow function eliminates bounceback when striking hardened surface and helps prevent marring					X



STANLEY® FATMAX® ANTI-VIBE® OVERSIZED STRIKE FACE HAMMERS

- Patented over-sized strike face, 20% larger "Sweet Spot" than traditional hammers.
- Proprietary tuning fork designed to reduce vibration and arm fatigue.
- Anti-vibration grip with soft grip material for comfort.
- Precision balanced heads for user comfort and control.

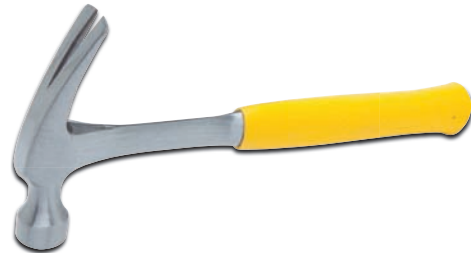


Product #	Type	Head Weight (oz)	Claw Style	Face Style	Face Dia.	Head Length (in)	Overall Length (in)
51-162	Nailing	16	Curve	Smooth	1-1/2	5-1/2	13-1/2
51-163	Nailing	16	Rip	Smooth	1-1/2	5-1/2	13-1/2
51-165	Nailing	20	Rip	Smooth	1-19/32	5-3/4	13-1/2
51-167	Framing	22	Rip	Checkered	1-3/4	6	16
51-177	Framing	22	Rip	Smooth	1-1/2	6-1/8	16
51-169	Framing	28	Rip	Checkered	1-1/3	6-1/8	16

**Than traditional hammers.*

STANLEY® HIGH-VISIBILITY ONE-PIECE STEEL NAILING HAMMERS

- High-visibility comfort grip features a ribbed surface and flared end, helps to dampen vibrations and reduce slipping.
- Ergonomically balanced for efficient nail driving.
- One-piece forged high-carbon steel for strength and durability.
- Rim temper helps reduce instances of chipping and spalling.



Product #	Head Weight (oz)	Claw Style	Face Style	Face Dia.	Head Length (in)	Overall Length (in)
STHT51246	20	Rip	Smooth	1-3/16	5-3/4	13-1/2

STANLEY® HICKORY HANDLE NAILING HAMMERS

- Forged heat-treated steel head for increased durability.
- Wood handle is lightweight and absorbs vibrations.
- Double wedge head-to-handle assembly for extremely secure fit.
- Rim tempered face reduces incidences of chipping or spalling.



Product #	Head Weight (oz)	Claw Style	Face Style	Face Dia.	Head Length (in)	Overall Length (in)
51-616	16	Curve	Smooth	1-3/16	5-1/4	13-1/4
51-716	16	Rip	Smooth	1-1/8	5-5/8	12-3/4

STANLEY® JACKETED GRAPHITE BALL PEIN HAMMER

- Forged and heat-treated head for increased durability.
- Jacketed graphite handle adds strength and durability, while minimizing shock.



Product #	Head Weight (oz)	Face Dia.	Ball Pein Dia. (in)	Head Length (in)	Overall Length (in)
54-716	16	1-1/4	1	4-1/8	12-3/4

STANLEY® HICKORY HANDLE BALL PEIN HAMMERS

- High quality hickory handle.
- Forged high-carbon steel head for durability.
- Black painted handle is lightweight and absorbs vibrations.
- Rim tempered face reduces incidences of chipping or spalling.



Product #	Head Weight (oz)	Face Dia.	Ball Pein Dia. (in)	Head Length (in)	Overall Length (in)
54-012	12	1-3/16	7/8	3-11/16	13
54-016	16	1-9/32	1	4-1/8	14
54-024	24	1-1/2	1-1/8	4-3/4	15-1/4
54-032	32	1-21/32	1-5/16	4-15/16	15-7/8

STANLEY® COMPO-CAST® BALL PEIN HAMMERS

- Forged and heat-treated head for increased durability.
- Rim tempered head reduces incidences of chipping or spalling.
- Non-sparking, chemical resistant molded urethane covering.
- The head is filled with steel shot to eliminate bounce back for dead blow action.



Product #	Head Weight (oz)	Face Dia.	Ball Pein Dia. (in)	Head Length (in)	Overall Length (in)
54-524	24	1-1/2	1-3/16	4-7/16	12-15/16
54-532	32	1-11/16	1-1/4	4-3/4	13-3/4



STANLEY® FATMAX® ANTI-VIBE® SLEDGE HAMMERS

- Particle dampened handles: Vibration dampening particulate in handle dampens vibration better than solid core handles.
- Anti-Vibe® handle grip reduces vibrations for comfort and control.
- Bullet nose strike face provides 50% more power versus traditional heads, standard strike face on opposite end for traditional users.
- Shatter-proof fiberglass handles provide better durability versus wood handles.



Product #	Head Weight (lbs)	Type	Overall Length (in)
FMHT56006	3	Drilling	11
FMHT56009	4	Engineer	14-1/2

STANLEY® JACKETED FIBERGLASS ENGINEER HAMMER

- Ideal for striking wood, metal or stone.
- Fiberglass core adds strength and durability in the handle, reduces vibrations and provides the "feel of wood".
- Yellow-colored shaft for easy product visibility.
- Exclusive rim temper reduces incidences of chipping or spalling.



Product #	Head Weight (lbs)	Face Dia.	Head Length (in)	Overall Length (in)
56-204	4	1-29/32	4-31/32	14

STANLEY® JACKETED FIBERGLASS BLACKSMITH HAMMER

- Ideal for striking unhardened metals.
- Fiberglass core adds strength and durability in the handle, reduces vibrations and provides the "feel of wood".
- Exclusive rim temper reduces incidences of chipping or spalling.



Product #	Head Weight (lbs)	Face Dia.	Head Length (in)	Overall Length (in)
56-218	2.5	1-39/64	5-1/8	13-5/8

STANLEY® FATMAX® ANTI-VIBE® BLACKSMITH HAMMER

- Ideal for striking unhardened metals.
- Anti-Vibe® technology minimizes vibration and shock at impact.
- Exclusive rim temper reduces incidences of chipping or spalling.
- Forged, one-piece steel construction for strength and durability.
- Slip-resistant handle for a secure grip and comfort.
- Precision balanced.



Product #	Head Weight (lbs)	Face Dia.	Head Length (in)	Overall Length (in)
56-003	2	1-3/8	5-1/8	14

STANLEY® HICKORY HANDLE SLEDGE HAMMERS

- Forged head is heat-treated and tempered for increased durability.
- Traditional, high quality hickory handle.



Product #	Head Weight (lbs)	Face Dia.	Head Length (in)	Overall Length (in)
56-808	8	2-5/16	6-7/16	34-1/2
56-810	10	2-3/8	7-1/8	35
56-812	12	2-5/8	7-1/2	35

STANLEY® FATMAX® ANTI-VIBE® BRICKLAYER'S HAMMER

- Ideal for cutting and setting brick, stone or masonry.
- Anti-Vibe® technology minimizes vibration and shock at impact.
- Exclusive rim temper reduces incidences of chipping or spalling.
- Forged, one-piece steel construction for strength and durability.
- Slip-resistant handle for a secure grip and comfort.
- Precision balanced.



Product #	Head Weight (oz)	Face Dia.	Head Length (in)	Overall Length (in)
54-022	20	15/16	6-3/4	11



STANLEY® HICKORY HANDLE SOFT-FACE HAMMER

- Soft-face helps minimize marring and surface damage.
- Faces are made of durable plastic that is ideal for fine finished surfaces.
- Plastic faces are replaceable.
- Hickory handle for durability.



Product #	Head Weight (oz)	Face Dia.	Head Length (in)	Overall Length (in)
57-594	8	1-13/64	3-27/32	12-1/8

STANLEY® RUBBER MALLETS

- Rubber head helps minimize marring and surface damage.
- Tough rubber head molded to a wood handle.



Product #	Head Weight (oz)	Face Dia.	Head Length (in)	Overall Length (in)
51-104	16	2-1/2	3-7/8	13-1/2
57-522	18	2-3/8	3-7/8	13-1/2

STANLEY® COMPO-CAST® STANDARD SOFT-FACE HAMMERS

- Uni-Cast™ construction of non-ferrous materials eliminates sparking and won't absorb liquids.
- No exposed metal on face, head or shaft.
- Dead blow function eliminates bounceback when striking hardened surfaces.
- Soft face helps prevent marring.
- Steel reinforced handle provides strength and resists breaking on overstrike.



Product #	Head Weight (oz)	Face Dia.	Head Length (in)	Overall Length (in)
57-530	10	1-13/64	3-1/8	10-1/8
57-531	18	1-3/4	3-3/4	11-1/4
57-532	21	2	4-1/16	12-7/8
57-533	42	2-15/32	4-5/8	14-1/4
57-534	52	2-13/16	5-1/2	15-1/4



STANLEY® COMPO-CAST® SLIMLINE SOFT-FACE HAMMERS

- Slimline model offers unique profile for assembly and repair applications in confined areas.
- Uni-Cast™ construction of non-ferrous materials eliminates sparking and won't absorb liquids.
- No exposed metal on face, head or shaft.
- Dead blow function eliminates bounceback when striking hardened surfaces.
- Steel reinforced handle provides strength and resists breaking on overstrike.



Product #	Head Weight (oz)	Face Dia.	Head Length (in)	Overall Length (in)
57-540	5	29/32	2-15/16	9-1/2
57-541	14	1-19/64	4-3/16	10-1/2
57-542	18	1-33/64	4-1/4	12-1/8
57-543	21	1-17/32	5-1/4	12-7/8



STANLEY® COMPO-CAST® SOFT-FACE SLEDGE HAMMERS

- Non-sparking, soft-face sledgehammers.
- Uni-Cast™ construction of non-ferrous materials eliminates sparking and won't absorb liquids.
- No exposed metal on face, head or shaft.
- Dead blow function eliminates bounceback when striking hardened surfaces.
- Soft face helps prevent marring.
- Steel reinforced handle provides strength and resists breaking on overstrike.
- Urethane covering helps reduce noise.
- Flat area on head allows upright storage.



Product #	Head Weight (lbs)	Face Dia.	Head Length (in)	Overall Length (in)
57-550	5	2-55/64	7	19-5/8
57-552	10.5	3-25/64	8-1/8	29-7/8
57-554	11.5	3-25/64	8-1/8	36-1/8





STANLEY® FUBAR® FORCIBLE ENTRY TOOL

- Forcible entry tool designed by responders for vehicle extrication and extreme demolition.
- 8-in-1 tool for prying, splitting, board bending, and striking jobs: demolition head, gas shut-off feature, spanner wrench, pry bar for ripping, hydrant wrench, second-tier board jaw (also fits square hydrant nuts), board jaw sized specifically for grabbing common dimensional lumber, bevelled nail slot for pulling and prying nails.
- One-piece forged steel bar for durability.
- Heat-treated and tempered striking face helps prevent chipping.
- Heat-resistant grips are durable and lightweight.
- Carabiner holes for easy attachment of shoulder strap.
- High-visibility 3M™ Scotchlite™ enhances visibility.



Product #	Head Width (in)	Overall Length (in)	Weight (lbs)
55-122	6-3/4	30	11

3M™ Scotchlite™ are trademarks of 3M.

STANLEY® FATMAX® FUBAR® III

- Forged, heat-treated one-piece steel construction for increased strength and durability.
- Textured bi-material grip panels are attached to handle on both sides.
- Heat-treated and tempered striking face with ripping hook and chamfered edges.
- Two tiered, serrated jaw for grabbing common dimensional lumber and decking.
- Nail slot on claw end with bevelled edge for pulling nails and prying.
- 4-in-1 tool for prying, splitting, board bending, and striking jobs.
- Pentagonal shape below serrated jaw can be used as a fire hydrant wrench to turn on/off a fire hydrant.
- Slotted claw end can also be used as a gas valve wrench to turn gas valve on/off.



Product #	Blade Width (in)	Head Width 1 (in)	Overall Length (in)	Weight (lbs)
55-120	2	6-3/4	30	9

STANLEY® FATMAX® FUBAR® FUNCTIONAL UTILITY BAR

- Forged, heat-treated one-piece steel construction for increased strength and durability.
- Textured bi-material grip over molded directly onto the bar for comfort and to provide a slip resistant grip.
- Heat-treated and tempered striking face with chamfered edges.
- Two tiered, serrated jaw for grabbing common dimensional lumber and decking.
- Tear shaped, bevelled nail slot specifically for pulling nails.
- Nail slot on claw end with bevelled edge for pulling nails and prying.
- 4-in-1 tool for prying, splitting, board bending, and striking jobs.
- Tool comes with two protective covers over sharp ends for safety.

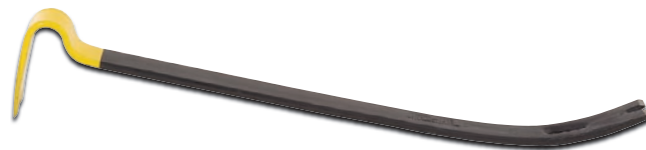


Product #	Blade Width (in)	Head Width 1 (in)	Overall Length (in)	Weight (lbs)
55-119	1	4-3/4	15	2.50

STANLEY® WONDER BAR® X21™ PRY BAR

- Forged, heat-treated one-piece steel construction for increased strength and durability.
- Bar has black finish to provide corrosion resistance.
- Yellow powder-coated claw end for high visibility.
- Tear shaped, bevelled nail slot specifically for pulling nails.
- Nail slots on claw ends with bevelled edges for pulling nails and prying.
- Both claw ends are polished.

Product #	Blade Width (in)	Head Width 1 (in)	Overall Length (in)	Weight (lbs)
55-526	3-11/32	1-3/4	21	2.30



STANLEY® WONDER BAR® PRY BARS

- Forged, heat-treated one-piece steel construction for increased strength and durability.
- Bar has black finish to provide corrosion resistance.
- Yellow powder-coated claw end for high visibility.
- Tear-shaped, bevelled nail slot specifically for pulling nails.
- Nail slots on claw ends with bevelled edges for pulling nails and prying.
- Both claw ends are polished.

Product #	Blade Width (in)	Head Width 1 (in)	Overall Length (in)	Weight (lbs)
55-045	7/8	1-3/4	7-1/2	0.24
55-515	1-3/4	1-3/4	12-3/4	1.30



STANLEY® SUPER WONDER BAR® PRY BAR

- Foot-levered, hands-free panel lift.
- Forged, heat-treated, high-carbon steel for strength and durability.
- Polished and bevelled cutting edges.
- Arched center for swing during nail pulling – no need for a wood block.
- Tight radius on bend angle aids in positioning bar.
- Extended tongue for grip and access in hard-to-reach places.
- High-visibility, powder-coated finish.

Product #	Blade Width (in)	Head Width 1 (in)	Overall Length (in)	Weight (lbs)
55-525	1-3/4	1-3/4	15-1/2	1.75



STANLEY® FATMAX® WRECKING BARS

- Forged one-piece steel construction for increased strength and durability.
- Tri-lobe design for increased strength and durability.
- Forged recesses in bar for better grip.
- Yellow powder-coated body for high visibility and provides corrosion resistance.
- Tear shaped, beveled nail slot specifically for pulling nails.
- Nail slot on claw ends with beveled edges for pulling nails and prying.
- Both claw ends are polished.

Product #	Head Width 1 (in)	Head Width 2 (in)	Overall Length (in)	Weight (lbs)
55-102	2	1-3/4	24	5.70
55-104	1-3/4	2	36	8.40





STANLEY® FORGED HEXAGONAL STEEL RIPPING BAR

- Forged one-piece steel construction for increased strength and durability.
- Yellow powder-coated claw end for high visibility.
- Beveled chisel end for prying.
- Nail slot on claw end with beveled edge for pulling nails and prying.
- Both chisel and claw end are polished.



Product #	Head Width 1 (in)	Head Width 2 (in)	Overall Length (in)	Weight (lbs)
55-136	1	1-1/4	36	5.30

STANLEY® CLAW BAR

- Ideal for precision nail pulling and prying.
- Polished, beveled claws for precise penetration.
- Flat striking face allows claw to be driven under deeply embedded nails.
- Forged, high-carbon alloy steel for long life.
- Tempered to help reduce chipping.



Product #	Overall Length (in)	Weight (lbs)
STHT55144	8	0.35

STANLEY® NAIL PULLER

- Forged one-piece steel construction for increased strength and durability.
- Bar has black finish to provide corrosion resistance.
- Yellow powder coated claw end for high visibility.
- Nail slots on claw ends for extracting nails.
- Extracting claws can be driven beneath the head of an embedded nail and then used to pull the nail head above the surface.
- Features 90° and 30° offset claws.
- Both claw ends are polished.



Product #	Width (in)	Overall Length (in)	Weight (lbs)
55-035	5/8	11	1.10

STANLEY® PANEL LIFTER

- Made of high-impact ABS.
- Angled handle keeps hands away from panel for comfort.
- Ergonomic design helps move materials with ease.
- Ideal for grabbing and carrying lumber, drywall and gypsum board.



Product #	Color	Overall Length (in)	Panel Width (in)	Weight (lbs)
93-300	Orange	14-1/2	6-1/2	0.60

STANLEY® 12 PIECE PUNCH & CHISEL SET

Product #: 16-299

- Forged, one-piece steel construction for strength and durability.
- Size marking on shank allows for easy identification of the tool.
- Yellow powder-coated finish for high visibility and to provide corrosion resistance.
- Striking surface is hardened and has chamfered edges for greater chipping resistance.
- Punch edge is ground to a precise angle for efficient punching and durability.
- Ideal for starting drill holes, marking metal or cutting/splitting hard stone, brick and concrete.
- Hardened, quenched and tempered for long life and durability.
- Includes reusable packaging for storing products.

Contents	Description
16-227	Punch, Center 1/4"
16-228	Punch, Center 5/16"
16-229	Punch, Starter 3/32"
16-230	Punch, Pin 1/16"
16-231	Punch, Pin 1/8"
16-232	Punch, Pin 5/32"
16-233	Punch, Pin 3/16"
16-234	Punch, Pin 1/4"
16-235	Punch, Pin 5/16"
16-236	Punch, Prick 3/8"
16-287	Cold Chisel, 1/2"
16-288	Cold Chisel, 5/8"



STANLEY® FATMAX® SHORT BLADE WOOD CHISELS

- Thru-Tang™ steel core transfers strike-force from strike steel strike cap to tip.
- Hardened, tempered high-chrome carbon steel blade for edge retention.
- Cutting edge is honed and ready for use right off the shelf.
- Precision ground blade is accurately sized and etched with blade size.
- Lacquered blade for corrosion protection.
- Ergonomic, bi-material handle for comfort and shatter resistance.
- Included blade guard protects working edges of blade when not in use.

Product #	Blade Width (in)	Overall Length (in)
16-975	1/2	9
16-977	3/4	9
16-978	1	9
16-980	1-1/2	9
16-981	2	9





STANLEY® FATMAX® 6 PIECE SHORT BLADE WOOD CHISEL SET

Product #: 16-971

- Thru-Tang™ steel core transfers strike-force from strike steel strike cap to tip.
- Hardened, tempered high-chrome carbon steel blade for edge retention.
- Cutting edge is honed and ready for use right off the shelf.
- Precision ground blade is accurately sized and etched with blade size.
- Lacquered blade for corrosion protection.
- Ergonomic, bi-material handle for comfort and shatter resistance.
- Included blade guard protects working edges of blade when not in use.



Contents	Description
16-975	FATMAX® Short Blade Chisel, 1/2"
16-977	FATMAX® Short Blade Chisel, 3/4"
16-978	FATMAX® Short Blade Chisel, 1"
16-980	FATMAX® Short Blade Chisel, 1-1/2"

STANLEY® FATMAX® 3 PIECE SHORT BLADE WOOD CHISEL SET



Product #: 16-970

- Thru-Tang™ steel core transfers strike-force from strike steel strike cap to tip.
- Hardened, tempered high-chrome carbon steel blade for edge retention.
- Cutting edge is honed and ready for use right off the shelf.
- Precision ground blade is accurately sized and etched with blade size.
- Lacquered blade for corrosion protection.
- Ergonomic, bi-material handle for comfort and shatter resistance.
- Included blade guard protects working edges of blade when not in use.



Contents	Description
16-975	FATMAX® Short Blade Chisel, 1/2"
16-977	FATMAX® Short Blade Chisel, 3/4"
16-978	FATMAX® Short Blade Chisel, 1"

STANLEY® 5 PIECE BAILEY® CHISEL SET

Product #: 16-401

- Micro-precision grind for superior sharpness out of the box.
- High quality carbon-chrome steel for edge retention.
- Blade lacquered for corrosion protection.
- Hardwood handle for comfort and impact resistance.
- Includes high quality leather pouch for storage.



Contents	Description
16-975	Bailey® Chisel, 1/2"
16-977	Bailey® Chisel, 3/4"
16-978	Bailey® Chisel, 1"
16-980	Bailey® Chisel, 1-1/2"

STANLEY® BI-MATERIAL SHORT BLADE WOOD CHISELS

- Hardened, tempered chrome carbon-steel blade for edge retention.
- Short series blade for strength and control.
- Lacquered blade for corrosion protection.
- Ergonomically designed, bi-material grip handle is impact resistant.
- Included blade guard protects working edges of blade when not in use.

Product #	Blade Width (in)	Overall Length (in)
16-308	1/2	9
16-312	3/4	9



STANLEY® 3 PIECE BI-MATERIAL SHORT BLADE WOOD CHISEL SET

Product #: 16-300

- Hardened, tempered chrome carbon-steel blade for edge retention.
- Short series blade for strength and control.
- Lacquered blade for corrosion protection.
- Ergonomically designed, bi-material grip handle is impact resistant.
- Included blade guard protects working edges of blade when not in use.

Contents	Description
16-308	Wood Chisel, Bi-Material Short Blade, 1/2"
16-312	Wood Chisel, Bi-Material Short Blade, 3/4"



STANLEY® 3 PIECE 150 SERIES SHORT BLADE WOOD CHISEL SET

Product #: 16-150

- Handle resists deformation, most solvents, and corrosive liquids.
- Carbon alloy steel blades are 3" (76mm) long.
- Precision ground blade with lacquered coating for corrosion protection.
- Cutting edge is honed and ready for use right off the shelf.
- Included blade guard protects working edges of blade when not in use.

Contents	Description
1	Wood Chisel, 150 Series Short Blade, 1/2"
1	Wood Chisel, 150 Series Short Blade, 3/4"
1	Wood Chisel, 150 Series Short Blade, 1"





STANLEY® CONSUMER FASTENING SELECTION GUIDE

STAPLERS	FASTENER TYPE				
	DURABILITY	EASY SQUEEZE	HI/LO POWER SETTING	STAPLES	BRADS
Electric Staplers					
Electric Stapler / Brad Nailer TRE550	XXXXX		X	X	X
Manual Staplers					
Heavy-duty Staple Gun / Brad Nailer TR250	XXXXX	XXXXX	X	X	X
Heavy-duty Staple Gun with Hi/Lo Setting TR150HL	XXXX	XXXXX	X	X	
Heavy-duty Staple Gun TR150	XXX	XXXXX	X	X	
Heavy-duty Staple Gun/ Cable Tacker CT10X	XXX	XXX	X	X	
All Steel Light-duty Chrome-Plated Staple Gun TR45	XX	XXX		X	
Electric Brad Nailer TRE650					
Electric Brad Nailer TRE650	XXXX		X		X
Heavy-duty Hammer Tacker PHT250C					
Heavy-duty Hammer Tacker PHT250C	XXXXX			X	
Hammer Tacker PHT150C					
Hammer Tacker PHT150C	XXX			X	

STAPLES	SIZE	TRE550	TR250	TR150HL	TR150	CT10X	TR45	TRE650	PHT250C	PHT150C
Heavy-Duty Staples										
TRA704T	1/4"	X	X	X	X	X				X
TRA705T	5/16"	X	X	X	X	X			X	X
TRA706T	3/8"	X	X	X	X	X			X	X
TRA708T	1/2"	X	X	X	X	X			X	
Heavy-Duty Monel Narrow Crown Staples										
TRA704MT	1/4"	X	X	X	X	X				X
TRA706MT	3/8"	X	X	X	X	X			X	X
Light-Duty Staples										
TRA204T	1/4"						X			
Heavy-Duty PowerCrown® Staples										
TRB504T	1/4"	Bostitch® PowerCrown® Tools								
TRB506T	3/8"									

GLUE	GR100	GR25-2	GR20	GR10
Dual Melt Standard Glue Sticks				
GS10DT				X
GS20DT	X	X	X	
GS25DT	X	X	X	
Standard Woodworking Glue				
GS260	X	X	X	

RIVETS	SIZE	MR100CG	MR77C
Aluminum Rivets			
PAA52-1B	5/32" x 1/8"	X	X
PAA54-1B	5/32" x 1/4"	X	X

RIVETERS/GLUE GUNS	DURABILITY	FEATURE
Riveters		
Contractor Grade Riveter MR100CG	XXXXX	Heavy-Duty
Swivel Head Riveter MR77C	XXXX	Swivel Head
Right-Angle Riveter MR55CS	XXX	Right Angled
Glue Guns		
DualMelt Pro™ Glue Gun Kit GR100	XXXXX	Hi & Lo Settings
Trigger-Feed Dual-Melt Glue Gun GR25-2	XXX	Hi & Lo Settings
Trigger Feed Hot-Melt Glue Gun GR20	XX	Hi Settings
Mini Hot-Melt Glue Gun GR10	XX	Hi Settings

STANLEY® ELECTRIC BRAD NAILER

- Housing made of a polycarbonate blend for strength and durability.
- Adjustable power setting allows user to select either Hi/Lo setting to adapt to material density.
- Soft grip handle, cap, and trigger reduces hand fatigue and provides a slip resistant grip.
- Contact-fire safety switch will not fire a brad unless nailer is pressed against a work surface.
- Slide loading magazine allows for quick loading and features a magnetic strip to hold brads in place when open.
- Brad indicator window allows user to know if nailer is loaded and also turns red when the nailer is almost out of brads.
- On/Off switch allows the tool to be easily shut off when not in use.
- Open nose design allows for easy jam clearing.
- 8 ft. electrical cord.
- Rugged injection molded carrying case included.
- Holds up to 100 brads.



Product #	Capacity Range	Color	Uses	Overall Length (in)
TRE650Z	Brads: 5/8" to 1-1/4" 18-gauge	Gray/Black	SWKBN Series	10-1/2

STANLEY® ELECTRIC STAPLER BRAD NAILER

- Heavy-duty design delivers outstanding driving power.
- Hi/Lo power for hard and soft materials.
- Flush-nose design solves the problem of stapling in tight spots.
- Contoured grip for extra comfort.
- Anti-jam mechanism saves time on the job.
- 8' power cord.
- Nose safety.



Product #	Capacity Range	Color	Uses	Overall Length (in)
TRES50Z	Staples: 1/4", 5/16", 3/8", 1/2", 9/16" Brads: 1/2", 9/16", 5/8"	Yellow	TRA700 Series, Arrow® T-50®	7-1/4

Arrow, T-50, T-25, T-75 and JT-21 are trademarks of Arrow Fastener Co., Inc.

STANLEY® HEAVY-DUTY STAPLE GUN BRAD NAILER

- Easy-squeeze product works overtime as a staple gun, brad nailer, cable tacker, and wire tacker.
- All-metal drive channel for penetration.
- Heavy-duty aircraft-aluminum housing for long-lasting, lightweight durability.
- Hi/Lo power lever for hard and soft materials.
- Flush-nose design solves the problem of stapling in tight spots.
- Lock-down handle for storage.
- Quick-view window simplifies staple identification.
- Bottom-loading, easy-slide, full-stick staple load.



Product #	Capacity Range	Color	Uses	Overall Length (in)
TR250	Staples: 1/4", 5/16", 3/8", 1/2", 9/16" Brads: 1/2, 9/16, 5/8	Gray/Black	TRA700 Series, Arrow® T-50®	7

Arrow, T-50, T-25, T-75 and JT-21 are trademarks of Arrow Fastener Co., Inc.



STANLEY® HEAVY-DUTY STAPLE GUN WITH HI/LO SETTING

- Easy-squeeze handle reduces hand fatigue.
- Hi/Lo power lever for hard and soft materials.
- Heavy-duty aircraft-aluminum housing for long-lasting, lightweight durability.
- Anti-jam mechanism saves time on the job.
- Delivers high power and deep penetration.
- Bottom-loading, easy-slide, full-stick staple load.



Product #	Capacity Range	Color	Overall Length (in)	Uses
TR150HL	Staples: 1/4", 5/16", 3/8", 1/2", 9/16"	Gray/Black	7	TRA700 Series, Arrow® T-50®

Arrow, T-50, T-25, T-75 and JT-21 are trademarks of Arrow Fastener Co., Inc.

STANLEY® HEAVY-DUTY STAPLE GUN

- Easy-squeeze handle reduces hand fatigue.
- Heavy-duty aircraft-aluminum housing for long-lasting, lightweight durability.
- Anti-jam mechanism saves time on the job.
- Delivers high power and deep penetration.
- Bottom-loading, easy-slide, full-stick staple load.



Product #	Capacity Range	Color	Overall Length (in)	Uses
TR150	Staples: 1/4", 5/16", 3/8", 1/2", 9/16"	Yellow/Black	7	TRA700 Series, Arrow® T-50®

Arrow, T-50, T-25, T-75 and JT-21 are trademarks of Arrow Fastener Co., Inc.

STANLEY® LIGHT-DUTY CHROME-PLATED STAPLE GUN

- Chrome plated housing made of a steel construction for strength and durability.
- Spring loaded staple push rod to load staples.
- Staple indicator window allows user to know if stapler is loaded or needs reloading.
- Flush nose will fit flush against perpendicular surfaces such as the junction of a wall or ceiling.
- Handle lock for safe storage.
- Unique jam clearing feature allows end user to open up and draw down the staple channel for jam clearing.



Product #	Capacity Range	Color	Overall Length (in)	Uses
TR45	Staples: 1/4", 5/16", 3/8"	Chrome	6	TRA200 Series, Arrow® JT-21®

Arrow, T-50, T-25, T-75 and JT-21 are trademarks of Arrow Fastener Co., Inc.

STANLEY® HEAVY-DUTY CHROME-PLATED STAPLE GUN

- Chrome plated housing made of a steel construction for strength and durability.
- Metal stapler core slides out by squeezing the latch and pulling, giving access to staple channel for easy and fast bottom load.
- Stapler core stays in the housing, making it difficult to lose.
- Staple indicator window indicates staple size and allows user to know if stapler is loaded or needs reloading.
- Flush nose will fit flush against perpendicular surfaces such as the junction of a wall or ceiling.
- Handle lock for safe storage.
- Unique handle locking mechanism allows end user to lock handle without engaging the staple driving mechanism.
- Easy access to staple channel allows for jam clearing.



Product #	Capacity Range	Color	Uses	Overall Length (in)
TR110	Staples: 1/4", 5/16", 3/8", 1/2", 9/16"	Chrome	TRA700 Series, Arrow® T-50®	7-1/4

Arrow, T-50, T-25, T-75 and JT-21 are trademarks of Arrow Fastener Co., Inc.

STANLEY® HEAVY-DUTY STAPLE GUN CABLE TACKER

- Easy-squeeze product works overtime as a staple gun, brad nailer, cable tacker, and wire tacker.
- All-metal drive channel for penetration.
- Heavy-duty aircraft-aluminum housing for long-lasting, lightweight durability.
- Hi/Lo power lever for hard and soft materials.
- Flush-nose design solves the problem of stapling in tight spots.
- Lock-down handle for storage.
- Quick-view window simplifies staple identification.
- Bottom loading, easy-slide, full-stick staple load.



Product #	Capacity Range	Color	Uses	Overall Length (in)
CT10X	Staples: 3/8", 7/16", 1/2", 9/16"	Black/Gray	CT100 Series, CT300 Series, Arrow® T-25®	7

Arrow, T-50, T-25, T-75 and JT-21 are trademarks of Arrow Fastener Co., Inc.

STANLEY® FATMAX® HAMMER TACKER

- Driver mechanism delivers more than 500,000 cycles for long-life performance.
- Anti-jam mechanism reduces downtime and increases productivity.
- Bottom-load, high-capacity, quick-load magazine accepts up to two full sticks of staples to minimize reloading time.
- Chrome-plated steel construction frame for corrosion resistance and durability.
- Ergonomic comfort grip minimizes fatigue and maximizes comfort.
- Surface guard won't tear Tyvek® and felt.
- Loads two full sticks of staples.



Product #	Capacity Range	Uses	Overall Length (in)	Weight (lbs)
PHT250C	Staples: 5/16", 3/8", 1/2"	TRA700 Series, Arrow® T-50®	13-1/2	2.64

Arrow, T-50, T-25, T-75 and JT-21 are trademarks of Arrow Fastener Co., Inc.

Tyvek® is a registered trademark of E. I. du Pont de Nemours and Company or its affiliates.

STANLEY® HEAVY-DUTY HAMMER TACKER

- Used for fast installation of carpeting, roofing materials or insulation.
- Contractor-quality design.
- Full-rubber grip absorbs shock and protects hand.
- Heavy-duty steel construction for added durability.
- Loads two full sticks of staples.



Product #	Capacity Range	Uses	Overall Length (in)	Weight (lbs)
PHT150C	Staples: 1/4", 5/16", 3/8"	TRA700 Series, Arrow® T-50®	12	2.13

Arrow, T-50, T-25, T-75 and JT-21 are trademarks of Arrow Fastener Co., Inc.



STANLEY® HEAVY-DUTY NARROW CROWN STAPLES

- For Heavy-duty stapling jobs such as insulation, carpet underlaying and roofing felt.
- Color-coded packaging makes size and product selection easy.



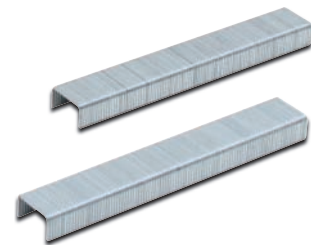
Product #	Crown Width (in)	Leg Length (in)	Gauge	Type	Quantity	For Use In
TRA704T	27/64	1/4	24	Chisel Point	1000	TR100 series, TR200 series, TRE500 series, PHT150, TR60; Arrow® ET-50™, ET2025™, ETC50™, ETF50BN™, ETN-50™, T-50®PBN, T55™, T55™C, T-50®, T55™, HT50A; Powershot™ 5700, 8000
TRA705T	27/64	5/16	24	Chisel Point	1000	TR100 Series, TR200 Series, TRE500 Series, PHT150, TR60; Arrow® ET50™, ET2025™, ETC50™, ETF50BN™, ETN50™, T-50®PBN, T55™, T55™C, T-50®, T55™, HT50A; Powershot™ 5700, 8000
TRA706T	27/64	3/8	24	Chisel Point	1000	TR100 Series, TR200 Series, TRE500 Series, PHT150, TR60; Arrow® ET50™, ET2025™, ETC50™, ETF50BN™, ETN50™, TR50®OC, T-50®PBN, T-55™, T55™C, T-50®, HT50A; Powershot™ 5700, 8000
TRA708T	27/64	1/2	24	Chisel Point	1000	TR100 Series, TR200 Series, TRE500 Series, TR60
*STHT74749	–	1/4, 3/8, 1/2	–	–	2000	TRA704, TRA706, TRA708
TRA706-5C	27/64	3/8	24	Chisel Point	5000	TR100 Series, TR200 Series, TRE500 Series, PHT150, TR60; Arrow® ET50™, ET2025™, ETC50™, ETF50BN™, ETN50™, TR50®OC, T-50®PBN, T-55™, T55™C, T-50®, HT50A; Powershot™ 5700, 8000
TRA708-5C	27/64	1/2	24	Chisel Point	5000	TR60, TR85, TR100, TR110, TR150, TR15HL, TR200, TR250, TRE500, TRE550, PHT250, PHT350T

Arrow, T-50, T-25, T-75 and JT-21 are trademarks of Arrow Fastener Co., Inc.

*STHT74749 includes 660 of the TRA704 staples and 670 each of the following staples: TRA706 & TRA708.

STANLEY® LIGHT-DUTY WIDE CROWN STAPLES

- For light-duty household and crafting stapling jobs.
- Color-coded packaging makes size and product selection easy.



Product #	Crown Width (in)	Leg Length (in)	Gauge	Type	Quantity	For Use In
TRA204T	29/64	1/4	24	Chisel Point	1000	TR45 and Arrow® JT-21®
*STHT74912	–	–	–	–	1500	–

Arrow, T-50, T-25, T-75 and JT-21 are trademarks of Arrow Fastener Co., Inc.

*STHT74912 includes 500 each of the following staples: TRA204T.

STANLEY® HEAVY-DUTY RIVETER

- Designed for stainless steel rivets for marine applications.
- Long handle makes riveter easy to squeeze.
- Rugged, contractor-grade die-cast metal construction for long life.
- Equipped with removable ejector spring.
- Uses 3/32", 1/8", 5/32" and 3/16" diameter steel and aluminum rivets.
- Uses 1/8" and 5/32" diameter stainless rivets.



Product #	Color	Overall Length (in)
MR100CG	Yellow/Gray	11-1/8

STANLEY® HEAVY-DUTY SWIVEL HEAD RIVETER

- Sets rivets at right angle or straight-on with a simple twist of rivet head.
- Rugged die-cast metal construction for long life.
- Extra nose pieces and wrench are conveniently stored in handle.
- Long handle makes riveter easy to squeeze.
- Uses 3/32", 1/8", 5/32" and 3/16" diameter steel and aluminum rivets.
- Rivets in hard-to-get places.



Product #	Color	Overall Length (in)
MR77C	Yellow/Black	11-1/8

STANLEY® DUALMELT PRO™ GLUE GUN KIT

- Delivers industrial performance with consumer appeal.
- Exclusive auto shutoff light for reliability and long life.
- Dual heater provides outstanding glue output.
- Temperature switch for both high and low temperature glue applications.
- On/off light and protected nozzle.
- Cushion grip for comfortable, slip-resistant trigger action.
- Interchangeable nozzle capability.
- Fold-out stand for handy storage while in use.



Product #	Contents	Operating Temperature (F)	Power (watts)	Overall Length (in)	Volts	Uses
GR100	(1) DualMelt Pro™ Glue Gun (1) Spreader Tip (1) Extender Tip (6) Dual Temp. Glue Sticks (6) Glue Sticks (5) Super Strength Glue Sticks	275°–410°	80	8-1/2	120	GS20DT, GS25DT, GS230, GS260



STANLEY® TRIGGER-FEED DUALMELT™ GLUE GUN

- Offers the versatility of high- and low-temperature gluing in one gun.
- Convenient, one-touch high/low selector switch.
- Uses standard dual-temperature glue on both settings and hot-melt formulas on high setting.
- Heats up quickly and bonds within 60 seconds.
- Fold-out stand for handy storage while in use.



Product #	Operating Temperature (F)	Power (watts)	Overall Length (in)	Volts	Uses
GR25-2	275° (Low); 410° (High)	80	8-1/2	120	GS20DT, GS25DT, GS230S, GS260A, GS264BK

STANLEY® TRIGGER-FEED HOT MELT GLUE GUN

- Quality engineered for reliable performance.
- Trigger-feed mechanism controls glue flow.
- Heats up quickly and bonds within 60 seconds.
- Uses standard hot melt sticks.
- Fold-out stand for handy storage while in use.



Product #	Operating Temperature (F)	Power (watts)	Overall Length (in)	Volts	Uses
GR20	410°	30	8-1/2	120	GS20DT, GS25DT, GS230S, GS260A, GS264BK

STANLEY® MINI HOT MELT GLUE GUN

- Small, portable size for quick gluing jobs in tight spots.
- Trigger-feed mechanism controls glue flow.
- Uses standard .28" mini hot melt sticks.
- Fold-out stand for handy storage while in use.



Product #	Operating Temperature (F)	Power (watts)	Overall Length (in)	Volts	Uses
GR10	385°	15	4-1/4	120	GS10DT

STANLEY® DUALMELT™ GLUE MINI STICKS

- For use in mini hot melt, low temperature and dual temperature glue guns.
- Excellent for bonding heat-sensitive materials and general applications.



Product #	Diameter (in)	Quantity	Set Time (seconds)	Overall Length (in)	For Use In
GS10DT	1/4	24	30 – 60	4	GR10

STANLEY® DUALMELT™ GLUE STICKS

- For use in standard hot-melt, low-temperature and dual-temperature glue guns.
- Excellent for bonding heat-sensitive materials and general applications.



Product #	Diameter (in)	Quantity	Set Time (seconds)	Overall Length (in)	For Use In
GS20DT	7/16	24	30 – 60	4	GR20, GR25-2, GR100
GS25DT	7/16	12	30 – 60	10	GR20, GR25-2, GR100

STANLEY® 100 PLUS® SCREWDRIVERS

- Large, deep fluted acetate handle stands up to heavy-duty industrial use.
- Easy-to-clean handle.
- Flanges on the blade inside the handle provides a solid, twist-resistant blade.
- Bars are fully ground and polished, then chrome plated for corrosion resistance.
- Bars are made of alloy steel and heat-treated for strength and durability.

STANLEY® 8 PIECE 100 PLUS® VINYL GRIP SCREWDRIVER SET

Product #: 66-568-A



Pieces	Description
8	(1) 1/4 x 1-1/2" Standard Slotted Tip (Stubby) (3) 5/16 x 8-1/2, 3/8 x 13-1/2, 7/16 x 10-1/4" Standard Slotted Tip (1) #2 x 1-1/2" Phillips Tip (Stubby) (3) #1 x 3, #2 x 4, #3 x 6" Phillips Tip

STANLEY® 18 PIECE 100 PLUS® COMBINATION SCREWDRIVER SET

Product #: 66-520-A



Pieces	Description
18	(1) 1/4 x 1-1/2" Standard Slotted Tip (Stubby); (1) 1/8 x 2" Standard Slotted Tip (Pocket); (5) 1/4 x 4", 3/16 x 3", 5/16 x 6", 3/8 x 8", 3/8 x 10" Standard Slotted Tip (3) 3/16 x 3", 3/16 x 6", 3/16 x 8" Cabinet Slotted Tip (1) #2 x 1-1/2" Phillips Tip (Stubby) (7) #0 x 3", #1 x 3", #1 x 10", #2 x 4", #2 x 10", #3 x 6", #4 x 8" Phillips Tip

STANLEY® 8 PIECE 100 PLUS® SCREWDRIVER SET

Product #: 66-158-A



Contents	Description
66-161-A	Screwdriver, 100 Plus® Standard Slotted Stubby 1/4" x 1-1/2"
66-164-A	Screwdriver, 100 Plus® Standard Slotted 1/4" x 4"
66-166-A	Screwdriver, 100 Plus® Standard Slotted 5/16" x 6"
66-168-A	Screwdriver, 100 Plus® Standard Slotted 3/8" x 8"
64-105-A	Screwdriver, 100 Plus® Phillips Stubby #2 x 1-1/2"
64-101-A	Screwdriver, 100 Plus® Phillips #1 x 3"
64-102-A	Screwdriver, 100 Plus® Phillips #2 x 4"
64-103-A	Screwdriver, 100 Plus® Phillips #3 x 6"

STANLEY® 7 PIECE 100 PLUS® SCREWDRIVER SET

Product #: 66-157-A

Contents	Description
66-161-A	Screwdriver, 100 Plus® Standard Slotted Stubby 1/4" x 1-1/2"
66-163-A	Screwdriver, 100 Plus® Standard Slotted 3/16" x 3"
66-164-A	Screwdriver, 100 Plus® Standard Slotted 1/4" x 4"
66-166-A	Screwdriver, 100 Plus® Standard Slotted 5/16" x 6"
66-168-A	Screwdriver, 100 Plus® Standard Slotted 3/8" x 8"
66-160-A	Screwdriver, 100 Plus® Standard Slotted 3/8" x 10"
66-162-A	Screwdriver, 100 Plus® Standard Slotted 3/8" x 12"



STANLEY® 5 PIECE 100 PLUS® STANDARD SLOTTED TIP SCREWDRIVER SET

Product #: 66-150-A

Contents	Description
66-161-A	Screwdriver, 100 Plus® Standard Slotted Stubby 1/4" x 1-1/2"
66-174-A	Screwdriver, 100 Plus® Square Standard Slotted 1/4" x 4"
66-176-A	Screwdriver, 100 Plus® Square Standard Slotted 5/16" x 6"
66-178-A	Screwdriver, 100 Plus® Square Standard Slotted 3/8" x 8"
66-172-A	Screwdriver, 100 Plus® Square Standard Slotted 3/8" x 12"



STANLEY® 5 PIECE 100 PLUS® PHILLIPS SCREWDRIVER SET

Product #: 66-156-A

Contents	Description
64-105-A	Screwdriver, 100 Plus® Phillips Stubby #2 x 1-1/2"
64-101-A	Screwdriver, 100 Plus® Phillips #1 x 3"
64-102-A	Screwdriver, 100 Plus® Phillips #2 x 4"
64-103-A	Screwdriver, 100 Plus® Phillips #3 x 6"
64-104-A	Screwdriver, 100 Plus® Phillips #4 x 8"



STANLEY® 100 PLUS® PHILLIPS SCREWDRIVERS



Product #	Tip Size	Tips	Shank Length (in)	Shank Type	Handle Length (in)	Overall Length (in)
64-100-A	#0	Phillips	3	Round	2-1/2	5-1/2
64-101-A	#1	Phillips	3	Round	3-3/4	6-3/4
64-102-A	#2	Phillips	4	Round	4-1/4	8-1/4
64-103-A	#3	Phillips	6	Round	5	11
64-104-A	#4	Phillips	8	Round	5-3/4	13-3/4
64-105-A	#2	Phillips	1-1/2	Round	2	3-1/2
64-170-A	#0	Phillips	2	Round	2-1/2	4-1/2
64-171-A	#1	Phillips	10	Round	3-3/4	13-3/4
64-172-A	#2	Phillips	10	Round	4-1/2	14-1/2

STANLEY® 100 PLUS® SLOTTED SCREWDRIVERS

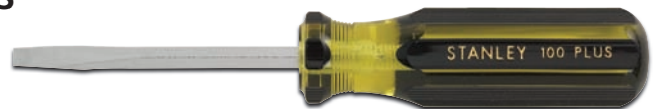
- Slotted tips are cross ground for consistent fit.



Product #	Size (in)	Tips	Shank Length (in)	Shank Type	Handle Length (in)	Overall Length (in)
66-101-A	1/8	Keystone Slotted	2	Round	2-1/2	4-1/2
66-102-A	3/32	Keystone Slotted	3	Round	2-3/4	5-3/4
66-103-A	3/32	Keystone Slotted	4	Round	2-1/2	6-1/2
66-163-A	3/16	Keystone Slotted	3	Round	3-3/4	6-3/4
66-164-A	1/4	Keystone Slotted	4	Round	4-1/4	8-1/4
66-011-A	1/4	Keystone Slotted	6	Round	4-1/4	10-1/4
66-166-A	5/16	Keystone Slotted	6	Round	5	11
66-013-A	5/16	Keystone Slotted	8	Round	5	13
66-160-A	3/8	Keystone Slotted	10	Round	5-1/2	15-1/2
66-162-A	3/8	Keystone Slotted	12	Round	5-1/2	17-1/2
66-168-A	3/8	Keystone Slotted	8	Round	5-1/2	13-1/2
66-161-A	1/4	Keystone Slotted	1-1/2	Round	2	3-1/2
66-112-A	1/8	Cabinet Slotted	2	Round	2-1/2	4-1/2
66-113-A	1/8	Cabinet Slotted	3	Round	2-1/2	5-1/2
66-114-A	1/8	Cabinet Slotted	4	Round	2-1/2	6-1/2
66-116-A	1/8	Cabinet Slotted	6	Round	2-1/2	8-1/2
66-118-A	1/8	Cabinet Slotted	8	Round	2-1/2	10-1/2
66-110-A	1/8	Cabinet Slotted	10	Round	2-1/2	12-1/2
66-183-A	3/16	Cabinet Slotted	3	Round	3-3/4	6-3/4
66-186-A	3/16	Cabinet Slotted	6	Round	3-3/4	9-3/4
66-188-A	3/16	Cabinet Slotted	8	Round	3-3/4	11-3/4
66-180-A	3/16	Cabinet Slotted	10	Round	3-3/4	13-3/4
66-182-A	3/16	Cabinet Slotted	12	Round	3-3/4	15-3/4

STANLEY® 100 PLUS® SQUARE SCREWDRIVERS

- Bolster reinforced construction.
- Square blade allows for use with a wrench for added torque.
- Slotted tips are cross ground for consistent fit.



Product #	Size (in)	Tips	Shank Length (in)	Shank Type	Handle Length (in)	Overall Length (in)
66-015-A	3/16	Keystone Slotted	3	Square	3-3/4	6-3/4
66-018-A	3/16	Keystone Slotted	4	Square	3-3/4	7-3/4
66-174-A	1/4	Keystone Slotted	4	Square	4-1/4	8-1/4
66-176-A	5/16	Keystone Slotted	6	Square	5	11
66-178-A	3/8	Keystone Slotted	8-1/4	Square	5-1/4	13-1/2
66-170-A	3/8	Keystone Slotted	10	Square	5-1/2	15-1/2
66-172-A	3/8	Keystone Slotted	12	Square	5-1/2	17-1/2

STANLEY® VINYL GRIP SCREWDRIVERS

- Vinyl grip handle provides extra torque capability, greater comfort, and a slip resistant grip.
- Acetate handle built for strength.
- Flanges on the blade inside the handle provide a solid, twist-resistant blade.
- Black oxide tips for use in electrical applications.
- Bars are fully ground and polished, then chrome plated for corrosion resistance.
- Bars are made of alloy steel and heat-treated for strength and durability.

8 PIECE STANLEY® VINYL GRIP SCREWDRIVER SET

Product #: 66-708

Contents	Description
66-088	Screwdriver, Vinyl Grip Standard Slotted Stubby 1/4" x 1-1/2"
66-090	Screwdriver, Vinyl Grip Standard Slotted 1/4" x 4"
66-097	Screwdriver, Vinyl Grip Cabinet Slotted 3/16" x 6"
66-094	Screwdriver, Vinyl Grip Square Blade Standard Slotted 5/16" x 6"
66-095	Screwdriver, Vinyl Grip Square Blade Standard Slotted 3/8" x 8"
65-901	Screwdriver, Vinyl Grip Phillips #1 x 3"
65-902	Screwdriver, Vinyl Grip Phillips #2 x 4"
65-905	Screwdriver, Vinyl Grip Phillips Stubby #2 x 1-1/2"



6 PIECE STANLEY® VINYL GRIP DIY SCREWDRIVER SET

Product #: 66-565

- Nickel-plated bars for corrosion resistance.

Pieces	Description
6	(2) 3/16 x 3 in, 3/16 x 6" Cabinet Slotted Tip (2) 1/4 x 4 in, 5/16 x 6" Standard Slotted Tip (2) #1 x 3 in, #2 x 4" Phillips Tip



6 PIECE STANLEY® VINYL GRIP PRO SCREWDRIVER SET

Product #: 66-565P

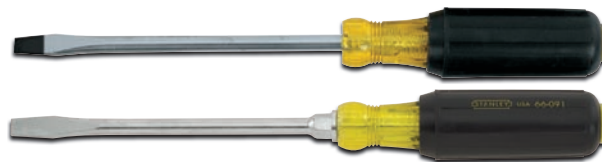
- Chrome plated bars with fully ground flat blades.
- Phillips tips are black oxide.

Contents	Description
66-090	Screwdriver, Vinyl Grip Standard Slotted 1/4" x 4"
66-091	Screwdriver, Vinyl Grip Standard Slotted 5/16" x 4"
65-902	Screwdriver, Vinyl Grip Phillips #2 x 4"



STANLEY® VINYL GRIP SLOTTED SCREWDRIVERS

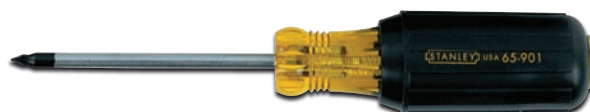
- Designed for close-quarter driving.



Product #	Size (in)	Tips	Blade Length (in)	Shank Type	Handle Length (in)	Overall Length (in)
66-090	1/4	Keystone Slotted	4	Round	4-1/2	8-1/2
66-091	5/16	Keystone Slotted	6	Round	5	11
66-092	3/8	Keystone Slotted	8	Round	5-1/2	13-5/8

STANLEY® VINYL GRIP PHILLIPS SCREWDRIVERS

- Precision machined Phillips tip is blasted black oxide for proper fastener fit and to eliminate plate chipping.



Product #	Tip Size	Tips	Shank Length (in)	Shank Type	Handle Length (in)	Overall Length (in)
65-902	#2	Phillips	4	Round	4-1/2	8-1/2
65-903	#3	Phillips	6	Round	5	11

STANLEY® VINYL GRIP NUT DRIVER SETS

- Vinyl grip provides extra torque capability, greater comfort, and a slip resistant grip.
- Grip marked with hex key symbol and size markings for quick identification.
- Acetate handles built for strength.
- Nickel-plated bars for corrosion resistance.
- Hex shank allows for use with a wrench for added torque.



Product #	Pieces	Description	Overall Length (in)
62-541	6	3/16, 1/4, 5/16, 3/8, 7/16, 1/2"	fractional
62-546	7	5, 6, 7, 8, 9, 10, 11 mm	metric

STANLEY® 6 PIECE PRECISION SCREWDRIVER SET

Product #: 66-052

- Swivel-head handles provide precision and reach.
- Tough, plastic handles with soft cushion grip for comfort.
- Finish on bars for corrosion resistance.
- Plastic storage case included.

Pieces	Description
6	(4) 1.4, 2.0, 2.4, 3.0 mm Standard Slotted (2) #0, #1 Phillips



STANLEY® WOOD HANDLE SCRATCH AWL

- Machined wood handle with flat sides to prevent rolling.
- Alloy steel bar anchored into handle.
- Plated bar for corrosion resistance.

Product #	Shank Length (in)	Handle Length (in)	Overall Length (in)
69-122	3-1/2	2-1/2	6



STANLEY® FOLDING HEX KEY SETS

- Durable composite construction.
- Rubber side inserts allow for a secure grip.
- Chamfered edge helps guide the wrench for a smooth, easy entry of the hex key.
- Compact, self-storing tool.
- Size markings printed on the hex key body for easy identification.
- Meets or exceeds ANSI specifications.

Product #	Pieces	Description
STHT71800	8	1.5, 2, 2.5, 3, 4, 5, 6, 8 mm
STHT71839	2-Pack	STHT71801 - (9) 5/64, 3/32, 7/64, 1/8, 9/64, 5/32, 3/16, 7/32, 1/4" STHT71800 - (8) 1.5, 2, 2.5, 3, 4, 5, 6, 8 mm





STANLEY® NO. 4 SWEETHEART® SMOOTHING BENCH PLANE



- Iron is made from extra-thick 1/8" (3.18 mm) A2 steel for excellent edge retention.
- One-piece base and frog virtually eliminate chatter.
- Cherry wood handle and knob for comfort.
- Norris-type adjuster with lateral locking feature.
- Adjustable throat plate for different types of wood.

Product #	Type	Blade Width (in)	Width (in)	Overall Length (in)
12-136	#4 Bench	2	2-1/2	10-5/8



STANLEY® NO. 62 SWEETHEART® LOW ANGLE JACK PLANE



- Iron is made from extra-thick 1/8" (3.18 mm) A2 steel for excellent edge retention.
- Cherry wood handle and knob for comfort.
- Norris-type adjustment for ease of use.
- Adjustable throat plate for different types of wood.

Product #	Type	Blade Width (in)	Width (in)	Overall Length (in)
12-137	#62 Jack	2	2-1/2	14



STANLEY® SWEETHEART® BLOCK PLANES



- Iron is made from extra-thick 1/8" (3.18 mm) A2 steel for excellent edge retention.
- Precision ground ductile cast iron base for accuracy.
- Norris-type adjuster with lateral locking feature.
- Low Angle Block Plane - 12° low angle bed for cutting end grain.

Product #	Type	Blade Width (in)	Width (in)	Overall Length (in)
12-138	#9-1/2 Block	1-5/8	2-1/8	6-7/16
12-139	#60-1/2 Low Angle Block	1-5/8	2-1/8	6-1/2



STANLEY® NO. 92 SWEETHEART® SHOULDER/CHISEL PLANE



- Dual purpose – converts from a shoulder plane to a chisel plane.
- Iron is made from extra-thick 1/8" (3.18 mm) A2 steel for excellent edge retention.
- Precision ground cast-iron base for accuracy.
- Finger grips for control.

Product #	Type	Blade Width (in)	Width (in)	Overall Length (in)
12-140	#92 Shoulder/Chisel	3/4	3/4	6-3/16



STANLEY® BAILEY® BENCH PLANES

- Gray, cast iron base with precision ground sides and bottom.
- Durable coating on cast iron base provides long-lasting protection.
- Frog seat holds the plane cutter at a 45° angle and is adjustable to allow for adjustment between the cutting edge and the front of the mouth.
- Solid brass depth adjustment knob.
- Depth adjustment knob and lateral alignment lever, offer precise control of the cutter.
- Quick-release lever cap makes cutter removal easy.
- Cap iron makes the blade more rigid and helps to curl and break apart wood shavings as they pass through the mouth.
- The knob and handle are contoured and made of polished high-impact plastic.
- Works with this standard STANLEY® cutter blade (12-313).
- Cutter blade included (12-313): 1.

Product #	Type	Blade Width (in)	Width (in)	Overall Length (in)
12-904	#4 Smoothing	2	2-1/2	9-11/16
12-905	#5 Jack	2	2-1/2	14



STANLEY
Bailey
SINCE 1843

STANLEY® BAILEY® BLOCK PLANES

- Ideal for planing end grain and plastic materials.
- 12-920 block plane has a fully adjustable cutter resting at 21°.
- 13-1/2° low-angle cutter on the 12-960 block plane keeps vibration to a minimum, creating a fine finish.
- Gray, cast-iron base with precision-ground sides and bottom.
- Finger grips machined into sides make single-handed use easy.
- Hardened, tempered steel gives precision-ground cutter edge durability.
- Cutter adjusts for depth and alignment, offering precise control.
- Durable epoxy coating for long-lasting protection.
- Quick-release cam lock makes iron removal easy.
- Replacement Iron 12-508 for 12-920, 12-504 for 12-960.

Product #	Type	Blade Width (in)	Width (in)	Overall Length (in)
12-920	Block	1-5/8	2	6-5/16
12-960	Low Angle Block	1-3/8	1-3/4	6-1/4



STANLEY
Bailey
SINCE 1843



STANLEY® ADJUSTABLE BLOCK PLANES

- Gray, cast iron base with precision ground sides and bottom.
- Durable coating on cast iron base provides long-lasting protection.
- Cutter rests at a 21° angle.
- Cutter is made out of hardened, tempered high-carbon chrome steel.
- Cast in finger rest at front of plane adds comfort and control.
- Solid brass depth adjustment knob.
- Depth adjustment knob and lateral alignment lever, offer precise control of the cutter.
- Quick-release lever cap makes cutter removal easy.
- Works with this standard STANLEY® cutter blade (12-508).
- Cutter blade included (12-508): 1



Product #	Type	Blade Width (in)	Width (in)	Overall Length (in)
12-220	Block	1-5/8	2	7
12-247	Block	1-5/8	2	6-7/8

STANLEY® SMALL TRIMMING PLANE

- Metal base with durable coating provides long-lasting protection.
- Circular ridges on the side for fingers to provide easy one-handed use and a slip resistant grip.
- Cutter rests at a 21° angle.
- Cutter is made out of hardened, tempered high-carbon chrome steel.
- Clamping screw allows for quick release of the lever cap for easy cutter removal.
- Cutter blade included: 1.



Product #	Type	Blade Width (in)	Width (in)	Overall Length (in)
12-101	Trimming	1	1-1/8	3-5/16

STANLEY® RB5™ PLANE

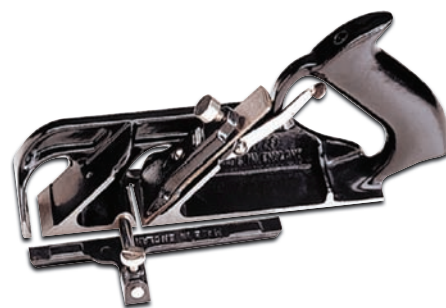
- Metal base with durable coating provides long-lasting protection.
- Ridges on the side for fingers to provide easy one-handed use and a slip resistant grip.
- Dual-blade positioning for planing and bullnosing into corners.
- Cutter rests at a 45° angle in both positions.
- Cutter is made out of hardened, tempered high-carbon chrome steel.
- Quick, easy blade change.
- Convenient blade storage in handle.
- Cutter blades included: 2.



Product #	Type	Blade Width (in)	Width (in)	Overall Length (in)
12-105	Block/Bullnose	2	2-1/8	6

STANLEY® BULLNOSE RABBET PLANE

- One-piece, cast-iron body and handle.
- Durable coating on cast iron body and handle provides long-lasting protection.
- Dual-blade positioning for planing and bullnosing into corners.
- Cutter rests at a 45° angle in both positions.
- Cutter is made out of hardened, tempered high-carbon chrome steel.
- Clamping screw allows for quick release of the lever cap for easy cutter removal in both positions.
- Depth adjustment lever on rear planning cutter, offers precise control of the cutter.
- Fitted with a spur for work across the grain, removable depth gauge, and adjustable fence for use on either side of the plane.
- Cutter blade included: 1.



Product #	Type	Blade Width (in)	Width (in)	Overall Length (in)
12-978	Bullnose Rabbet	1-1/2	1-1/2	10

STANLEY® SPOKESHAVE - FLAT BASE

- One-piece cast iron body with double handles for control and efficiency.
- Raised handles protect users hands.
- Durable coating on cast iron base provides long-lasting protection.
- Manual depth/lateral alignment nuts, offer precise control of the cutter.
- Clamping screw allows for quick release of the lever cap for easy cutter removal.
- Cutter blade included: 1.



Product #	Blade Width (in)	Width (in)	Overall Length (in)
12-951	2-1/8	1-5/8	10

STANLEY® CHISEL/PLANE CUTTER SHARPENING SYSTEM

- Complete system for accurate and precise sharpening of chisel and plane cutter cutting edges.
- Guides user to achieve a precise sharp edge that is square to the blade.
- Features angle setting gauge with preset markings at the following angles for easy setup: 25°, 30°, and 35°.
- Suitable for use with chisel blades and plane cutters from 1/4 in to 2-3/4 in (4mm to 60mm).

Product #	Contents
16-050	Honing guide, White Oil, Oilstone (8" X 2" aluminum oxide grit sharpening stone, double-sided with fine and medium grade).





STANLEY® PLANE REPLACEMENT BLADES

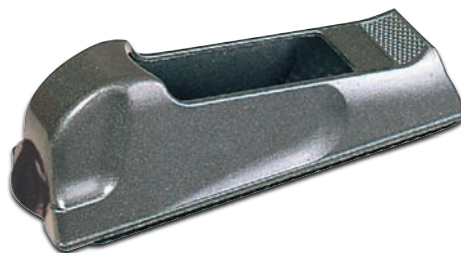
- Made of hardened, tempered high-carbon chrome steel.
- Can be honed to a razor sharp edge.
- Cutters are fine rotary ground to a flat surface for easier sharpening.
- Cutters are supplied with an accurately ground edge of 25°, but before use an additional honed 30° angle is recommended.



PLANE SKU #	REPLACEMENT BLADES											
	12-141 A2 STEEL	12-142 A2 STEEL	12-143 A2 STEEL	12-144 A2 STEEL	12-134 HIGH-CARBON	12-313 HIGH-CARBON	12-508 HIGH-CARBON	12-504 HIGH-CARBON	12-330 HIGH-CARBON	12-378 HIGH-CARBON	12-333 HIGH-CARBON	12-350 HIGH-CARBON
12-136	X											
12-137		X										
12-138			X									
12-139			X									
12-140				X								
12-904						X						
12-905						X						
12-920							X					
12-960								X				
12-404					X							
12-220							X					
12-247									X			
12-105										X		
12-978											X	
12-951												X

STANLEY® SURFORM® POCKET PLANE

- Die-cast alloy body with metallic gray finish.
- Contoured to fit in palm of hand.
- Designed for one-handed use.
- Thumbscrew blade tension for quick blade replacement.
- Ideal for end-grain work, sheet rocking, and smoothing edges of laminates.
- Works with this standard STANLEY® Surform® blade (21-398).
- STANLEY® Surform® blade included (21-398): 1.



Product #	Type	Cut	Blade Width (in)	Width (in)	Overall Length (in)
21-399	Pocket Plane	Fine	1-5/8	1-9/16	5-5/8

STANLEY® SURFORM® SHAVER

- One-piece, high-impact ABS body.
- Simple, click-on blade replacement.
- Works on pull stroke.
- Works with this standard STANLEY® Surform® blade (21-515).
- STANLEY® Surform® blade included (21-515): 1.



Product #	Type	Cut	Blade Width (in)	Width (in)	Overall Length (in)
21-115	Shaver	Regular	1-5/8	1-1/2	7-1/4

STANLEY® SURFORM® REPLACEMENT BLADES

- Heat-treated, round blade for enlarging holes and smoothing out curved surfaces.



Product #	# of Blades	Type	Cut	Blade Width (in)	For Use On	Overall Length (in)
21-291	1	Round	Standard	5/8		10
21-398	1	Pocket Flat	Fine	1-5/8	21-399	5-7/16
21-515	1	Shaver	Standard	1-5/8	21-115	2-5/16

STANLEY® SURFORM® HALF ROUND BLADE





- For use on metal and hard surfaces.



Product #	# of Blades	Type	Cut	Blade Width (in)	For Use On	Overall Length (in)
21-299A	10	1/2 Round	Standard	1-1/2		10



STANLEY® SURFORM® TOOL & BLADES

				
	FINE CUT 21-393	ROUND 21-291	FINE CUT 21-398	CURVED 21-515
Hardwood	X	X	X	X
Softwood	X	X	X	X
End Grain	X		X	
Chipboard		X		X
Plywood		X		X
Blockboard		X		X
Vinyl	X	X	X	X
Rubber		X		X
Plaster	X	X	X	X
Thermalite		X		X
Chalk		X		X
Fiberglass		X		X
Brass	X		X	
Aluminum	X		X	
Copper	X		X	
Mild Steel	X		X	
Plastic Laminates				X
Plastic Fillers	X	X	X	X
Nylon		X		X
Vinyl Flooring		X		X
Fits Tool(s)			21-399	21-115

STANLEY® CHAINSAW FILES

- Round file for sharpening chainsaw blades.
- Follow saw manufacturer's specifications and safety instructions when sharpening chainsaw blades.



Product #	Cut	Overall Length (in)
22-121	Single	8
22-122	Single	8

STANLEY® PERFORMANCE POCKET INSPECTOR FLASHLIGHT

- One 1-1/4 watt bright white, long-lasting LED delivers 40 lumens of light.
- Tactile, rubberized rear on/off switch for easy and comfortable access.
- Wrist band lanyard included to help prevent flashlight from being dropped.
- Durable anodized aluminum body with slip-resistant textured grip.
- Electroplated reflector combined with a shatter-proof lens provides a strong focused beam.
- IPX4 level weather resistance prevents water from entering the flashlight in outdoor conditions.
- High-visibility yellow bands allows easy identification.
- Meets or exceeds ANSI standards.



Product #	Bulb Type	Lumens	# of Batteries Included	Battery Type	Battery Needs	Run Time	Color
95-151	1-1/4 Watt LED	40	0	AA	2	5 hours	Black/Yellow

STANLEY® FATMAX® DIAGONAL CUTTING PLIERS

- Slim head design allows access into tight spaces.
- Induction hardened cutting jaws engineered to stay sharp longer than non-induction hardened jaws.
- Forged, high-quality carbon steel provides a durable cutting edge.
- Meets or exceeds ANSI specifications.

Product #	Overall Length (in)
89-858	6-3/8
89-859	7-1/2



STANLEY® FATMAX® LINEMAN'S PLIERS

- High-leverage pivot design uses less energy to cut than traditional cutting pliers.
- Induction hardened cutting jaws engineered to stay sharp longer than non-induction hardened jaws.
- Precision machined jaws ideal for gripping, twisting and cutting.
- Forged, high-quality carbon steel provides a durable gripping and cutting edge.
- Meets or exceeds ANSI specifications.

Product #	Overall Length (in)
89-865	9-1/2



STANLEY® FATMAX® LONG NOSE CUTTING PLIERS

- Precision machined jaws ideal for gripping, twisting and cutting.
- Slim head design allows access into tight spaces.
- Induction hardened cutting jaws engineered to stay sharp longer than non-induction hardened jaws.
- Forged, high-quality carbon steel provides a durable gripping and cutting edge.
- Meets or exceeds ANSI specifications.

Product #	Overall Length (in)
89-869	6-1/2
89-870	8-1/16



STANLEY® BI-MATERIAL DIAGONAL CUTTING PLIERS

- Slip-resistant bi-material handle for a comfortable grip.
- Drop-forged steel is strong and durable.
- Fixed joint design used for cutting.
- Individually sharpened blades cut soft and hard wire.
- Meets or exceeds ANSI specifications.
- 3-Zone Bi-material grips for comfort and control.
- Black oxide finish helps resist corrosion.

Product #	Overall Length (in)
84-027	6-1/4
84-028	7-3/16





3 PIECE STANLEY® BI-MATERIAL PLIERS SET

Product #: 84-056

- Slip-resistant bi-material handle for a comfortable grip.
- Drop-forged steel is strong and durable.
- Pliers set designed for grasping, bending and cutting.
- Meets or exceeds ANSI specifications.
- 3-Zone Bi-material grips for comfort and control.
- Black oxide finish helps resist corrosion.



Contents	Description
84-027	Pliers, Bi-Material Diagonal Cutting 7"

4 PIECE STANLEY® BI-MATERIAL PLIERS SET

Product #: 84-058

- Slip-resistant bi-material handle for a comfortable grip.
- Drop-forged steel is strong and durable.
- Pliers set designed for grasping, bending and cutting.
- Meets or exceeds ANSI specifications.
- 3-Zone Bi-material grips for comfort and control.
- Black oxide finish helps resist corrosion.



Contents	Description
84-028	Pliers, Bi-Material Diagonal Cutting 7"

STANLEY® GROOVE JOINT PLIERS

- Oil-resistant dipped handle allows for a comfortable grip.
- Drop-forged steel is strong and durable.
- Slip-resistant tongue and groove design used for grasping and turning.
- Meets or exceeds ANSI specifications.



Product #	Adjustment Positions	Jaw Capacity (in)	Overall Length (in)
84-109	6	11/16	8
84-110	7	2	10
84-111	8	2-1/8	12
84-020	9	3-11/16	16-1/4

STANLEY® SLIP-JOINT PLIERS

- Oil-resistant dipped handle allows for a comfortable grip.
- Drop-forged steel is strong and durable.
- Adjustable joint design used for grasping and turning.
- Meets or exceeds ANSI specifications.



Product #	Adjustment Positions	Jaw Capacity (in)	Overall Length (in)
84-097	2	1/2	6-3/4

STANLEY® DIAGONAL CUTTING PLIERS

- Oil-resistant dipped handle allows for a comfortable grip.
- Drop-forged steel is strong and durable.
- Fixed joint design used for cutting.
- Individually sharpened blades cut soft and hard wire.
- Meets or exceeds ANSI specifications.

Product #	Jaw Capacity (in)	Overall Length (in)
84-104	5/16	5-3/4
84-105	7/16	6-3/16
84-108	1/2	7-5/16



STANLEY® LINEMAN'S CUTTING PLIERS

- Oil-resistant dipped handle allows for a comfortable grip.
- Drop-forged steel is strong and durable.
- Fixed joint design used for grasping, bending and cutting.
- Individually sharpened blades cut soft and hard wire.
- Meets or exceeds ANSI specifications.

Product #	Jaw Capacity (in)	Overall Length (in)
84-112	2/3	7-1/2
84-113	7/8	8-3/4



STANLEY® LONG NOSE PLIERS

- Oil-resistant dipped handle allows for a comfortable grip.
- Drop-forged steel is strong and durable.
- Fixed joint design used for bending, turning and cutting.
- Long nose design for use in hard-to-reach areas.
- Meets or exceeds ANSI specifications.

Product #	Jaw Capacity (in)	Overall Length (in)
84-101	1-3/8	6-7/8



STANLEY® 3 PIECE PLIERS SET

Product #: 84-114

- Oil-resistant dipped handle allows for a comfortable grip.
- Drop-forged steel is strong and durable.
- Pliers set designed for grasping, bending and cutting.
- Meets or exceeds ANSI specifications.

Contents	Description
84-097	Pliers, Slip Joint 6"
84-105	Pliers, Diagonal Cutting 6"
84-101	Pliers, Long Nose Cutting Pliers 6"





STANLEY® STRAIGHT JAW LOCKING PLIERS

- Forged steel is strong and durable.
- Straight jaws ideal for tightening, clamping, twisting and turning flat objects such as sheet metal.
- Induction hardened jaws last longer and grip better than non-induction hardened jaws.
- Adjustment screw provides the ideal holding pressure.
- Meets or exceeds ANSI specifications.



Product #	Jaw Adjustment (in)	Jaw Capacity (in)	Jaw Length (in)	Overall Length (in)
84-810	0 – 7/8	1-5/16	1-1/32	7-1/2

STANLEY® C-CLAMP LOCKING PLIERS

- Forged steel is strong and durable.
- Wide opening jaws with swivel pads provides greater versatility in clamping a variety of shapes and sizes.
- Swivel pad jaws help distribute clamping pressure.
- Turn screw adjustment.
- Meets or exceeds ANSI specifications.



Product #	Jaw Capacity (in)	Overall Length (in)
84-815	3-3/8	11-1/4

STANLEY® FATMAX® COMPOUND ACTION AVIATION SNIPS

- Cuts up to 18 gauge (1.2 mm) cold-rolled steel or 23 gauge (0.7 mm) stainless steel.
- Forged Chrome Molybdenum steel cutting blades for strength, durability and long cutting life.
- Serrated cutting blades provide a sturdy bite and help prevent material from slipping during use.
- Latch design allows for a quick single handed operation
- Adjustment-free fasteners prevent loosening of the blades.
- Meets or exceeds ANSI standards.



Product #	Cut	Color	Cutting Edge Length (in)	Overall Length (in)	Weight (lbs)
14-563	Straight	Yellow	1-7/8	9-7/8	0.91

STANLEY® FATMAX® AVIATION SNIPS

- Flush hardware helps prevent catching on materials while cutting.
- Auto release mechanism provides for fast one-handed operation.
- Induction hardened cutting edge helps stay sharp longer*.
- Compact blade designed for notching or trimming heavy stock.
- Cuts up to 18ga (1.2mm) cold-rolled steel or 22ga (0.7mm) stainless steel.
- 1/4" blade markings for quick precise cut.



Product #	Cut	Cutting Edge Length (in)	Overall Length (in)	Weight (lbs)	Handle Color
FMHT73755	Left	1-3/16	10	0.87	Red
FMHT73756	Straight	1-3/16	10	0.87	Yellow
FMHT73558	Straight, Left, Right (3 PC Set)	1-3/16	10	2.61	Yellow, Red, Green

*Compared to non-induction hardened jaws

STANLEY® FATMAX® LONG NOSE STRAIGHT CUT SNIPS

- Cuts up to 18ga (1.2mm) cold-rolled steel or 23ga (0.7mm) stainless steel.
- Flush hardware helps prevent catching on materials while cutting.
- Auto release mechanism provides for fast one-handed operation.
- Slip-resistant grip for comfort and control.



Product #	Cut	Cutting Edge Length (in)	Overall Length (in)	Weight (lbs)	Handle Color
FMHT73561	Straight	3-3/16	13-13/16	0.96	Yellow/Black

*Compared to non-induction hardened jaws

STANLEY® WIRE STRIPPER/CUTTER

- Adjustable slide stop and hole designed for bending and looping wire.
- Oil-resistant dipped handle allows for a comfortable grip.
- Capacity: 10 to 26 gauge solid wire.
- Meets or exceeds ANSI specifications.



Product #	Overall Length (in)
84-213	5-1/8

STANLEY® MAXSTEEL® MULTI-ANGLE BASE VISE

- Infinite and lockable positioning achieved with swivel-ball design.
- Easily attached to most work surfaces with integral screw clamp.
- Durable cast-aluminum and steel construction.
- Removable jaw pads help protect surfaces from marring and damage.



Product #	Jaw Depth (in)	Jaw Width (in)
83-069M	1-1/2	2-3/4

STANLEY® ADJUSTABLE WRENCHES

- Adjustable jaw design allows tool to grip many fastener sizes.
- Knurl adjusting mechanism for quick and precise adjustment.
- Laser-etched fractional and mm jaw scale for easy size adjustment.
- Built-in tension spring stabilizes movable jaw.
- Forged chrome-vanadium steel is strong and durable.
- Lightweight handle design.
- Polished chrome head and chrome-plated body for anti-corrosion protection.
- Handle hole for tethering, hanging or storage.
- Meets or exceeds ANSI specifications.



Product #	Max. Opening (in)	Head Width (in)	Overall Length (in)
87-367	17/32	3/8	6
87-369	1	1/2	8
87-471	1-1/8	1/2	10
87-473	1-3/8	3/4	12



STANLEY® COMBINATION WRENCHES

- Chrome-vanadium steel forging for durability and high torque.
- Max-Drive™ design of the box end allows for 15% more torque than standard wrenches and helps reduce fastener rounding.
- 15° box end offset for additional knuckle clearance.
- Full polish plating for anti-corrosion protection and easy cleaning.
- Meets or exceeds ANSI specifications.

STANLEY® 14 PIECE SATIN FINISH COMBINATION WRENCH SET – 12 POINT

Product #: 85-990

- Pouch included.

# of Pieces	Contents
14	3/8, 7/16, 1/2, 9/16, 5/8, 11/16, 3/4, 13/16, 7/8, 15/16, 1, 1-1/16, 1-1/8, 1-1/4 in



STANLEY® 11 PIECE SATIN FINISH FRACTIONAL COMBINATION WRENCH SET – 12 POINT

Product #: 85-450

- Pouch included.

# of Pieces	Contents
11	3/8, 7/16, 1/2, 9/16, 5/8, 11/16, 3/4, 13/16, 7/8, 15/16, 1 in



STANLEY® 13 PIECE FULL POLISH LONG COMBINATION WRENCH SET – 12 POINT

Product #: 87-244

- Pouch included.

# of Pieces	Contents
13	1/4, 9/32, 5/16, 11/32, 3/8, 7/16, 1/2, 9/16, 5/8, 11/16, 3/4, 13/16, 7/8 in



STANLEY® 13 PIECE FULL POLISH METRIC LONG COMBINATION WRENCH SET – 12 POINT

Product #: 87-245

- Pouch included.

# of Pieces	Contents
13	8, 9, 10, 11, 12, 13, 14, 15, 16, 17, 18, 19, 20 mm



STANLEY® 11 PIECE FRACTIONAL COMBINATION WRENCH SET – 12 POINT

Product #: 94-385W

- In plastic storage rack.

# of Pieces	Contents
11	1/4, 5/16, 11/32, 3/8, 7/16, 1/2, 9/16, 5/8, 11/16, 3/4, 13/16 in



STANLEY® 11 PIECE FULL POLISH METRIC COMBINATION WRENCH SET – 12 POINT

Product #: 94-386W

- In plastic storage rack.

# of Pieces	Contents
11	7, 8, 9, 10, 11, 12, 13, 14, 15, 16, 17 mm



STANLEY® 6 PIECE FULL POLISH COMBINATION WRENCH SET – 12 POINT

Product #: 85-927

- In plastic storage rack.

# of Pieces	Contents
6	1/4, 3/8, 7/16, 1/2, 9/16, 5/8 in





STANLEY® 7 PIECE RATCHETING COMBINATION WRENCH SET – 12 POINT

Product #: 94-542W



# of Pieces	Contents
7	3/8, 7/16, 1/2, 9/16, 5/8, 11/16, 3/4 in

STANLEY® PEAR HEAD QUICK RELEASE™ RATCHETS

- Pear head design for strength, durability, and performance.
- Quick-release mechanism to lock sockets onto the drive during operation and allow easy changeover.
- Reversible mechanism for easy one-hand direction change.
- Chrome-vanadium steel forging for durability and high-torque performance.

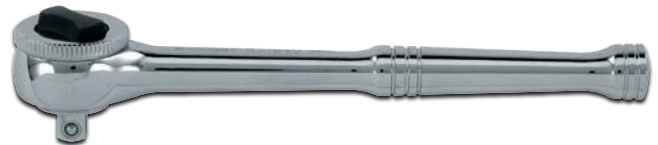
Product #	Drive Size (in)	Overall Length (in)
89-817	1/4	6-1/8
91-929	3/8	7-11/16
89-818	3/8	8
89-819	1/2	10-1/4



STANLEY® ROUND HEAD QUICK RELEASE™ RATCHET

- Forged from high-quality steel and finished in high-polish chrome.
- Ratchet handles are ergonomically designed and have an easy-to-use, thumb-operated reverse-switch mechanism.

Product #	Drive Size (in)	Overall Length (in)	Handle Type
87-720	1/2	9-7/8	Knurled



STANLEY® FATMAX® MATTE BLACK CHROME MECHANIC'S TOOL SETS

- Oversized laser etched markings provide improved visibility.
- Matte black chrome finish delivers premium rust resistance.
- Chrome-vanadium steel forging for strength and durability.
- Durable blow mold carry case.
- Meet or exceeds ANSI specifications.

STANLEY® FATMAX® 229 PIECE 1/4", 3/8" & 1/2" DRIVE MATTE BLACK CHROME MECHANIC'S TOOL SET

Product #: FMMT71665

Contents	Description
----------	-------------

229	<p>140 Piece Max-Drive™ Socket Set –</p> <p>(24) 1/4" Drive 6 Point Standard: 5/32, 3/16, 7/32, 1/4, 9/32, 5/16, 11/32, 3/8, 7/16, 1/2, 9/16", 4, 4.5, 5, 5.5, 6, 7, 8, 9, 10, 11, 12, 13, 14 mm</p> <p>(16) 1/4" Drive 6 Point Deep: 5/32, 3/16, 1/4, 5/16, 11/32, 3/8, 7/16, 1/2", 6, 7, 8, 9, 10, 11, 12, 13 mm</p> <p>(24) 3/8" Drive 6 Point Standard: 5/16, 11/32, 3/8, 7/16, 1/2, 9/16, 5/8, 11/16, 3/4, 13/16, 7/8, 15/16", 8, 9, 10, 11, 12, 13, 14, 15, 16, 17, 18, 19 mm</p> <p>(19) 3/8" Drive 6 Point Deep: 3/8, 7/16, 1/2, 9/16, 5/8, 11/16, 3/4, 13/16, 7/8", 10, 11, 12, 13, 14, 15, 16, 17, 18, 19 mm</p> <p>(22) 1/2" Drive 12 Point Standard: 3/8, 7/16, 1/2, 9/16, 5/8, 11/16, 3/4, 13/16, 7/8, 15/16, 1", 10, 11, 12, 13, 14, 15, 17, 18, 19, 21, 22 mm</p> <p>Accessories:</p> <p>(5) 3/8" Drive E Sockets: E10, E11, E12, E14, E16</p> <p>(2) 3/8" Drive 6 Point 5/8" & 13/16" Spark Plug Sockets</p> <p>(9) 3/8" Drive Bit Sockets: (TX) T10, T15, T20, T27, T30, T40, T45, T50, T55</p> <p>(9) 3/8" Drive Hex Sockets: 5/32, 3/16, 7/32, 1/4, 9/32", 7, 8, 9, 10 mm</p> <p>(1) 1/4" Drive Universal Joint</p> <p>(1) 3/8" Drive Universal Joint</p> <p>(1) 3/8" Drive Female to 1/4" Drive Male Adapter</p> <p>(1) 1/2" Drive Female to 3/8" Drive Male Adapter</p> <p>(1) 1/4" Drive Pear Head Ratchet</p> <p>(1) 1/4" Drive 6" Extension Bar</p> <p>(1) 3/8" Drive Pear Head Ratchet</p> <p>(1) 3/8" Drive 6" Extension Bar</p> <p>(1) 1/2" Drive Pear Head Ratchet</p> <p>(1) 1/2" Drive 5" Extension Bar</p> <p>(1) 1/4" Drive Multi-Bit Ratcheting Screwdriver</p> <p>(40) 1/4" Drive Specialty Bits</p> <p>(20) 1/4" Drive Nut Bits: 5/32, 3/16, 7/32, 1/4, 9/32, 5/16, 11/32, 3/8, 7/16, 1/2", 4, 5, 5.5, 6, 7, 8, 9, 10, 11, 12 mm</p> <p>28 Piece Hex Key Set –</p> <p>(12) Short Hex Keys: 3/64, 1/16, 5/64, 3/32, 7/64, 9/64", 1.5, 2, 2.5, 3, 4, 4.5 mm</p> <p>(16) Long Hex Keys: 7/64, 1/8, 9/64, 5/32, 3/16, 7/32, 1/4, 5/16", 1.5, 2, 2.5, 3, 4, 5, 6, 7 mm</p>
-----	--





STANLEY® FATMAX® 179 PIECE 1/4", 3/8" & 1/2" DRIVE MATTE BLACK CHROME MECHANIC'S TOOL SET

Product #: FMMT71664

MECHANIC'S TOOLS

Contents	Description
179	<p>95 Piece Max-Drive™ Socket Set –</p> <p>(22) 1/4" Drive 6 Point Standard: 5/32, 3/16, 7/32, 1/4, 9/32, 5/16, 11/32, 3/8, 7/16, 1/2", 4, 4.5, 5, 5.5, 6, 7, 8, 9, 10, 11, 12, 13 mm</p> <p>(10) 1/4" Drive 6 Point Deep: 5/16, 11/32, 3/8, 7/16, 1/2", 9, 10, 11, 12, 13 mm</p> <p>(20) 3/8" Drive 6 Point Standard: 5/16, 3/8, 7/16, 1/2, 9/16, 5/8, 11/16, 3/4, 13/16, 7/8", 10, 11, 12, 13, 14, 15, 16, 17, 18, 19 mm</p> <p>(10) 3/8" Drive 6 Point Deep: 5/8, 11/16, 3/4, 13/16, 7/8", 15, 16, 17, 18, 19 mm</p> <p>(16) 1/2" Drive 12 Point Standard: 1/2, 9/16, 5/8, 11/16, 3/4, 13/16, 7/8, 15/16", 12, 13, 14, 15, 17, 18, 19, 21 mm</p> <p>Accessories:</p> <p>(2) 3/8" Drive 6 Point 5/8" & 13/16" Spark Plug Sockets</p> <p>(5) 3/8" Drive Star Bit Sockets: T10, T15, T20, T27, T30</p> <p>(1) 1/4" Drive Universal Joint</p> <p>(1) 3/8" Drive Universal Joint</p> <p>(1) 3/8" Drive Female to 1/4" Drive Male Adapter</p> <p>(1) 1/2" Drive Female to 3/8" Drive Male Adapter</p> <p>(1) 1/4" Drive Pear Head Ratchet</p> <p>(1) 1/4" Drive 6" Extension Bar</p> <p>(1) 3/8" Drive Pear Head Ratchet</p> <p>(1) 3/8" Drive 6" Extension Bar</p> <p>(1) 1/2" Drive Pear Head Ratchet</p> <p>(1) 1/2" Drive 5" Extension Bar</p> <p>(1) 1/4" Drive Multi-Bit Ratcheting Screwdriver</p> <p>(40) 1/4" Drive Specialty Bits</p> <p>(15) 1/4" Drive Nut Bits: 5/32, 3/16, 7/32, 1/4, 9/32, 5/16, 11/32, 3/8, 7/16, 1/2", 4, 5, 6, 7, 8 mm</p> <p>28 Piece Hex Key Set –</p> <p>(12) Short Hey Keys: 3/64, 1/16, 5/64, 3/32, 7/64, 9/64", 1.5, 2, 2.5, 3, 4, 4.5 mm</p> <p>(16) Long Hex Keys: 7/64, 1/8, 9/64, 5/32, 3/16, 7/32, 1/4, 5/16, 1.5, 2, 2.5, 3, 4, 5, 6, 7 mm</p>



STANLEY® FATMAX® 141 PIECE 1/4" & 3/8" DRIVE MATTE BLACK CHROME MECHANIC'S TOOL SET

Product #: FMMT71663

Contents	Description
141	<p>67 Piece Max-Drive™ Socket Set –</p> <p>(18) 1/4" Drive 6 Point Standard: 3/16, 7/32, 1/4, 9/32, 5/16, 11/32, 3/8, 7/16, 1/2", 5, 6, 7, 8, 9, 10, 11, 12, 13 mm</p> <p>(10) 1/4" Drive 6 Point Deep: 5/16, 11/32, 3/8, 7/16, 1/2", 9, 10, 11, 12, 13 mm</p> <p>(20) 3/8" Drive 6 Point Standard: 5/16, 3/8, 7/16, 1/2, 9/16, 5/8, 11/16, 3/4, 13/16, 7/8", 10, 11, 12, 13, 14, 15, 16, 17, 18, 19 mm</p> <p>(10) 3/8" Drive 6 Point Deep: 5/8, 11/16, 3/4, 13/16, 7/8", 15, 16, 17, 18, 19 mm</p> <p>Accessories:</p> <p>(2) 3/8" Drive 6 Point 5/8" & 13/16" Spark Plug Sockets</p> <p>(1) 1/4" Drive Universal Joint</p> <p>(1) 3/8" Drive Universal Joint</p> <p>(1) 3/8" Drive Female to 1/4" Drive Male Adapter</p> <p>(1) 1/4" Drive Pear Head Ratchet</p> <p>(1) 1/4" Drive 6" Extension Bar</p> <p>(1) 3/8" Drive Pear Head Ratchet</p> <p>(1) 3/8" Drive 6" Extension Bar</p> <p>(1) 1/4" Drive Multi-Bit Ratcheting Screwdriver</p> <p>(30) 1/4" Drive Specialty Bits</p> <p>(15) 1/4" Drive Nut Bits: 5/32, 3/16, 7/32, 1/4, 9/32, 5/16, 11/32, 3/8, 7/16, 1/2", 4, 5, 6, 7, 8 mm</p> <p>28 Piece Hex Key Set –</p> <p>(12) Short Hey Keys: 3/64, 1/16, 5/64, 3/32, 7/64, 9/64", 1.5, 2, 2.5, 3, 4, 4.5 mm</p> <p>(16) Long Hex Keys: 7/64, 1/8, 9/64, 5/32, 3/16, 7/32, 1/4, 5/16, 1.5, 2, 2.5, 3, 4, 5, 6, 7 mm</p>



STANLEY® MECHANIC'S TOOL SETS

- STANLEY® drive tools are forged from High quality steel and finished in high-polish nickel chrome or black chrome.
- Selected ratchet handles are ergonomically designed and have an easy-to-use, thumb-operated reverse-switch mechanism.
- Sockets and extension bars remain locked onto the drive until disengaged with an easy-to-reach, low-profile quick-release button.
- Sockets feature our Max-Drive™ design, a unique radius corner design that provides 15% more torque* to tighten fasteners easily and simplify the turning of rounded corners.
- Max-Drive™ helps reduce fastener wear by minimizing contact on the outer 5% of the fastener, helping to increase life expectancy.*
- Max-Drive™ helps reduce slipping on frozen or rusted fasteners.
- All STANLEY® ratchets, sockets and wrenches are manufactured globally to STANLEY specifications, meeting and often exceeding ANSI specifications.

*Than standard sockets

STANLEY® 201 PIECE 1/4", 3/8" & 1/2" DRIVE MECHANIC'S TOOL SET

Product #: STMT71654

Contents	Description
201	(23) 1/4" Drive 6 Point Standard: 5/32, 3/16, 7/32, 1/4, 9/32, 5/16, 11/32, 3/8, 7/16, 1/2", 4, 4.5, 5, 5.5, 6, 7, 8, 9, 10, 11, 12, 13, 14 mm (21) 1/4" Drive 6 Point Deep: 5/32, 3/16, 7/32, 1/4, 9/32, 5/16, 11/32, 3/8, 7/16, 1/2", 4, 5, 6, 7, 8, 9, 10, 11, 12, 13, 14 mm (23) 3/8" Drive 6 Point Standard: 1/4, 5/16, 3/8, 7/16, 1/2, 9/16, 5/8, 11/16, 13/16", 6, 7, 8, 9, 10, 11, 12, 13, 14, 15, 16, 17, 18, 19 mm (8) 3/8" Drive 6 Point Deep: 3/8, 7/16, 1/2, 9/16, 5/8", 10, 12, 14 mm (10) 1/2" Drive 6 Point Standard: 3/8, 7/16, 1/2, 9/16, 5/8", 13, 14, 15, 16, 17 mm (8) Combination Wrenches: 3/8, 7/16, 1/2, 9/16", 8, 9, 10, 12 mm Accessories: (55) Screwdriver Bits (28) Hex Keys (17) Nut Drivers (1) 1/4" Drive 3" Extension Bar (1) 1/4" Drive Pear Head Ratchet (1) 1/4" Drive Spinner Handle (1) 1/4" Drive Bit Holder (1) 3/8" Drive 6 Point 5/8" Spark Plug Socket (1) 3/8" Drive 3" Extension Bar (1) 3/8" Drive Pear Head Ratchet (1) 1/2" Drive Pear Head Ratchet Blow-Molded Case



STANLEY® 170 PIECE 1/4", 3/8" & 1/2" DRIVE MECHANIC'S TOOL SET

Product #: 96-011

Contents	Description
170	(16) 1/4" Drive 6 Point Standard: 5/32, 3/16, 7/32, 1/4, 9/32, 5/16, 11/32, 3/8", 4, 4.5, 5, 5.5, 6, 7, 8, 9 mm (12) 1/4" Drive 6 Point Deep: 3/16, 7/32, 1/4, 9/32, 5/16, 11/32", 4, 5, 6, 7, 8, 9 mm (18) 3/8" Drive 6 Point Standard: 1/4, 5/16, 3/8, 7/16, 1/2, 9/16, 5/8, 11/16, 13/16", 6, 7, 8, 9, 10, 11, 12, 13, 14 mm (6) 3/8" Drive 6 Point Deep: 3/8, 1/2, 5/8", 10, 12, 14 mm (10) 1/2" Drive 6 Point Standard: 7/16, 1/2, 9/16, 5/8, 7/8", 15, 16, 17, 18, 19 mm (8) Combination Wrenches: 3/8, 7/16, 1/2, 9/16", 8, 9, 10, 12 mm Accessories: (55) Specialty Bits (26) Hex Keys (7) 3/16, 7/32, 1/4, 5/16, 11/32, 3/8, 7/16" Nut Drivers (5) 6, 7, 8, 10, 11 mm Nut Drivers, (1) 1/4" Drive Bit Holder (1) 1/4" Drive Pear Head Ratchet (1) 1/4" Drive 3" Extension Bar (1) 3/8" Drive 3" Extension Bar (1) 3/8" Drive 6 Point 5/8" Spark Plug Socket (1) 3/8" Drive Pear Head Ratchet (1) 1/2" Drive Pear Head Ratchet Blow-Molded Case





STANLEY® 150 PIECE 1/4" & 3/8" DRIVE MECHANIC'S TOOL SET

Product #: 97-543

Contents	Description
150	(21) 1/4" Drive 6 Point Standard: 3/16, 7/32, 1/4, 9/32, 5/16, 11/32, 3/8, 7/16, 1/2, 9/16", 4, 5, 6, 7, 8, 9, 10, 11, 12, 13, 14 mm (16) 3/8" Drive 12 Point Standard: 5/16, 3/8, 7/16, 1/2, 9/16, 5/8, 11/16, 3/4", 9, 10, 12, 13, 14, 15, 17, 19 mm (10) 3/8" Drive 6 Point Deep: 7/16, 1/2, 9/16, 11/16, 3/4", 12, 13, 14, 15, 17 mm (14) Combination Wrenches: 1/4, 5/16, 3/8, 7/16, 1/2, 9/16, 5/8", 6, 8, 10, 12, 13, 14, 15 mm Accessories: (55) Specialty Bits (18) Hex Keys (1) 6" Long Nose Pliers (1) 6" Slip-Joint Pliers (1) 6.5 x 100 mm Flat Head Screwdriver (1) 5 x 75 mm Flat Head Screwdriver (1) 3" Phillips Screwdriver #1 (1) 4" Phillips Screwdriver #2 (1) 1/4" Drive Pear Head Ratchet (1) 1/4" Drive 3" Extension Bar (2) 3/8" Drive 3, 6" Extension Bars (1) 3/8" Drive 6 Point 5/8" Spark Plug Socket (1) 3/8" Drive 12 Point 13/16" Spark Plug Socket (1) 3/8" Drive Pear Head Ratchet (1) 3/8" Drive Male to 1/4" Drive Female Adapter Blow-Molded Case



MECHANIC'S TOOLS

STANLEY® 145 PIECE 1/4" & 3/8" DRIVE MECHANIC'S TOOL SET

Product #: STMT71653

Contents	Description
145	(24) 1/4" Drive 6 Point Standard: 5/32, 3/16, 7/32, 1/4, 9/32, 5/16, 11/32, 3/8, 7/16, 1/2, 9/16", 4, 4.5, 5, 5.5, 6, 7, 8, 9, 10, 11, 12, 13, 14 mm (22) 1/4" Drive 6 Point Deep: 5/32, 3/16, 7/32, 1/4, 9/32, 5/16, 11/32, 3/8, 7/16, 1/2, 9/16", 4, 5, 6, 7, 8, 9, 10, 11, 12, 13, 14 mm (20) 3/8" Drive 6 Point Standard: 1/4, 5/16, 3/8, 7/16, 1/2, 9/16, 5/8, 11/16", 6, 7, 8, 9, 10, 11, 12, 13, 14, 15, 16, 17 mm (8) 3/8" Drive 6 Point Deep: 3/8, 7/16, 1/2, 9/16", 10, 12, 13, 14 mm (8) Combination Wrench: 3/8, 1/2, 9/16, 5/8", 10, 11, 12, 13 mm Accessories: (30) Screwdriver Bits (16) Hex Keys (10) Nut Drivers (1) 1/4" Drive 3" Extension Bar (1) 1/4" Drive Pear Head Ratchet (1) 1/4" Drive Spinner Handle (1) 1/4" Drive Bit Holder (1) 3/8" Drive 6 Point 5/8" Spark Plug Socket (1) 3/8" Drive 3" Extension Bar (1) 3/8" Drive Pear Head Ratchet Blow-Molded Case



STANLEY® 123 PIECE 1/4" & 3/8" DRIVE MECHANIC'S TOOL SET

Product #: STMT71652

Contents	Description
123	(24) 1/4" Drive 6 Point Standard: 5/32, 3/16, 7/32, 1/4, 9/32, 5/16, 11/32, 3/8, 7/16, 1/2, 9/16", 4, 4.5, 5, 5.5, 6, 7, 8, 9, 10, 11, 12, 13, 14 mm (20) 1/4" Drive 6 Point Deep: 5/32, 3/16, 7/32, 1/4, 9/32, 5/16, 11/32, 3/8, 7/16, 1/2", 4, 5, 6, 7, 8, 9, 10, 11, 12, 13 mm (25) 3/8" Drive 6 Point Standard: 1/4, 5/16, 3/8, 7/16, 1/2, 9/16, 5/8, 11/16, 3/4, 13/16, 7/8", 6, 7, 8, 9, 10, 11, 12, 13, 14, 15, 16, 17, 18, 19 mm (9) 3/8" Drive 6 Point Deep: 5/16, 3/8, 7/16, 1/2, 9/16", 9, 10, 12, 13 mm Accessories: (22) Screwdriver Bits (16) Hex Keys (1) 1/4" Drive 3" Extension Bar (1) 1/4" Drive Pear Head Ratchet (1) 1/4" Drive Spinner Handle (1) 1/4" Drive Bit Holder (1) 3/8" Drive 6 Point 5/8" Spark Plug Socket (1) 3/8" Drive 3" Extension Bar (1) 3/8" Drive Pear Head Ratchet Blow-Molded Case



STANLEY® 85 PIECE 1/4" & 3/8" DRIVE MECHANIC'S TOOL SET

Product #: STMT71651

Contents	Description
85	(24) 1/4" Drive 6 Point Standard: 5/32, 3/16, 7/32, 1/4, 9/32, 5/16, 11/32, 3/8, 7/16, 1/2, 9/16", 4, 4.5, 5, 5.5, 6, 7, 8, 9, 10, 11, 12, 13, 14 mm (20) 1/4" Drive 6 Point Deep: 5/32, 3/16, 7/32, 1/4, 9/32, 5/16, 11/32, 3/8, 7/16, 1/2", 4, 5, 6, 7, 8, 9, 10, 11, 12, 13 mm (19) 3/8" Drive 6 Point Standard: 1/4, 5/16, 3/8, 7/16, 1/2, 9/16, 5/8, 11/16", 6, 7, 8, 9, 10, 11, 12, 13, 14, 15, 17 mm Accessories: (15) Screwdriver Bits (1) 1/4" Drive 3" Extension Bar (1) 1/4" Drive Pear Head Ratchet (1) 1/4" Drive Spinner Handle (1) 1/4" Drive Bit Holder (1) 3/8" Drive 6 Point 5/8" Spark Plug Socket (1) 3/8" Drive 3" Extension Bar (1) 3/8" Drive Pear Head Ratchet Blow-Molded Case





STANLEY® 75 PIECE 1/4" & 3/8" DRIVE MASTER MECHANIC'S TOOL SET

Product #: 85-595

Contents	Description
75	<p>(22) 1/4" Drive 6 Point Standard: 5/32, 3/16, 7/32, 1/4, 9/32, 5/16, 11/32, 3/8, 7/16, 1/2", 4, 4.5, 5, 5.5, 6, 7, 8, 9, 10, 11, 12, 13 mm</p> <p>(19) 3/8" Drive 12 Point Standard: 3/8, 7/16, 1/2, 9/16, 5/8, 11/16, 3/4, 13/16", 9, 10, 11, 12, 13, 14, 15, 16, 17, 18, 19 mm</p> <p>(10) 3/8" Drive 12 Point Deep: 3/8, 7/16, 1/2, 9/16, 11/16", 10, 12, 13, 14, 15 mm</p> <p>(5) Combination Wrenches: 3/8, 7/16, 1/2, 9/16, 5/8"</p> <p>Accessories: (1) 3/8" Drive 6 Point 5/8" Spark Plug Socket (3) #1, #2, #3 Phillips Specialty Bits (3) 4, 5-1/2, 7" Standard Slotted Specialty Bits (5) T10, T15, T20, T25, T30 Star Specialty Bits (1) 1/4" Drive Spinner Handle (1) 1/4" Drive Bit Holder (1) 1/4" & 3/8" Drive Round Head Ratchets Knurled Handle (1) 1/4" Drive 3" Extension Bar (2) 3/8" Drive 3, 6" Extension Bars Blow-Molded Case</p>



MECHANIC'S TOOLS

STANLEY® 75 PIECE 1/4" & 3/8" DRIVE MECHANIC'S TOOL SET

Product #: 96-010

Contents	Description
75	<p>(20) 1/4" Drive 6 Point Standard: 3/16, 7/32, 1/4, 9/32, 5/16, 11/32, 3/8, 7/16, 1/2", 4, 5, 6, 7, 8, 9, 10, 11, 12, 13, 14 mm</p> <p>(20) 1/4" Drive 6 Point Deep: 5/32, 3/16, 7/32, 1/4, 9/32, 5/16, 11/32, 3/8, 7/16, 1/2", 4, 5, 6, 7, 8, 9, 10, 11, 12, 13 mm</p> <p>(22) 3/8" Drive 6 Point Standard: 1/4, 5/16, 3/8, 7/16, 1/2, 9/16, 5/8, 11/16, 13/16", 6, 7, 8, 9, 10, 11, 12, 13, 14, 15, 16, 17, 19 mm</p> <p>(7) 3/8" Drive 6 Point Deep: 3/8, 7/16, 1/2, 9/16", 10, 12, 13 mm</p> <p>Accessories: (1) 1/4" Drive Pear Head Ratchet (2) 1/4" Drive 3, 6" Extension Bars (1) 3/8" Drive 6 Point 5/8" Spark Plug Socket (1) 3/8" Drive Pear Head Ratchet (1) 3/8" Drive 3" Extension Bar Blow-Molded Case</p>



STANLEY® 60 PIECE 1/4" & 3/8" DRIVE MECHANIC'S TOOL SET

Product #: STMT71650

Contents	Description
60	(24) 1/4" Drive 6 Point Standard: 5/32, 3/16, 7/32, 1/4, 9/32, 5/16, 11/32, 3/8, 13/32, 7/16, 1/2, 9/16", 4, 4.5, 5, 5.5, 6, 7, 8, 9, 10, 11, 12, 13 mm (19) 3/8" Drive 6 Point Standard: 1/4, 5/16, 3/8, 7/16, 1/2, 9/16, 5/8, 11/16, 3/4, 13/16", 8, 9, 10, 11, 12, 13, 14, 15, 17 mm Accessories: (10) Screwdriver Bits (1) 1/4" Drive 2" Extension Bar (1) 1/4" Drive Spinner Handle (1) 1/4" Drive Bit Holder (1) 3/8" Drive 6 Point 5/8" Spark Plug Socket (1) 3/8" Drive 3" Extension Bar (1) 3/8" Drive Female to 1/4" Drive Male Adapter (1) 3/8" Drive Pear Head Ratchet Blow-Molded Case



STANLEY® 40 PIECE 1/4" & 3/8" DRIVE MECHANIC'S TOOL SET

Product #: STMT71648

Contents	Description
40	(19) 1/4" Drive 6 Point Standard: 5/32, 3/16, 7/32, 1/4, 9/32, 5/16, 11/32, 3/8, 7/16, 1/2", 4, 5, 6, 7, 8, 9, 10, 11, 12 mm (10) 3/8" Drive 6 Point Standard: 7/16, 1/2, 9/16, 5/8, 11/16", 13, 14, 15, 16, 17 mm Accessories: (6) Specialty Bits (1) 1/4" Drive Spinner Handle (1) 1/4" Drive Bit Holder (1) 3/8" Drive Pear Head Ratchet (1) 3/8" Drive 3" Extension Bar (1) 3/8" Drive Female to 1/4" Drive Male Adapter Blow-Molded Case



STANLEY® 44 PIECE MIXED TOOL SET

Product #: 94-690

Contents	Description
44	(20) 1/4 Drive 25 mm (16) Hex Keys: 1/16, 5/64, 3/32, 1/8, 5/32, 3/16, 7/32, 1/4", 1.5, 2, 2.5, 3, 4, 5, 5.5, 6 mm (1) 16 oz Fiberglass Handle Hammer (1) Torpedo Level (1) 16 ft Tape Rule (1) 6" Sliding Joint Pliers (1) 6" Long Nose Pliers (1) Self Locking Snap-off Cartridge Knife (1) 1/4 Drive Spinner Handle (1) 1/4 Drive Bit Holder Blow-Molded Case

■ Metric and fractional hex key sets come in separate, durable caddies to keep them organized.





STANLEY® 30 PIECE 1/4" DRIVE FRACTIONAL & METRIC SOCKET SET – 6 & 12 POINT

Product #: 92-804

Contents	Description
30	(17) 1/4" Drive 6 Point Standard: 3/16, 7/32, 1/4, 9/32, 5/16, 11/32, 3/8, 7/16, 1/2, 9/16" , 6, 7, 8, 9, 10, 11, 12 mm (10) 1/4" Drive 12 Point Standard: 3/8, 7/16, 1/2", 6, 7, 8, 9, 10, 11, 12 mm Accessories: (1) 1/4" Drive 3" Extension Bar (1) 1/4" Drive Pear Head Ratchet (1) 1/4" Drive Universal Joint Blow-Molded Case



MECHANICS TOOLS

STANLEY® 21 PIECE 1/4" DRIVE FRACTIONAL SOCKET SET – 6 POINT

Product #: 85-388

Contents	Description
21	(9) 6 Point Standard: 3/16, 7/32, 1/4, 9/32, 5/16, 11/32, 3/8, 7/16, 1/2" (7) 6 Point Deep: 1/4, 9/32, 5/16, 11/32, 3/8, 7/16, 1/2" Accessories: (2) 3, 6" Drive Extension Bars (1) Pear Head Ratchet (1) Spinner Handle (1) Universal Joint Blow-Molded Case



STANLEY® 20 PIECE 1/4" DRIVE MECHANIC'S TOOL SET

Product #: 92-802

Contents	Description
20	(18) 1/4" Drive 6 Point Standard: 5/32, 3/16, 7/32, 1/4, 9/32, 5/16, 11/32, 3/8, 7/16, 1/2", 6, 7, 8, 9, 10, 11, 12, 13 mm Accessories: (1) 1/4" Drive Pear Head Ratchet - Quick Release (1) 1/4" Drive 3" Extension Bar Blow-Molded Case



STANLEY® 34 PIECE 3/8" DR. SOCKET SET FRACTIONAL & METRIC – 12 POINT**Product #: 85-405**

Contents	Description
34	(21) 12 Point Standard: 5/16, 3/8, 7/16, 1/2, 9/16, 5/8, 11/16, 3/4, 13/16, 7/8", 8, 9, 10, 11, 12, 13, 14, 15, 17, 18, 19 mm (9) 12 Point Deep: 3/8, 7/16, 1/2, 9/16, 5/8, 11/16, 3/4, 13/16, 7/8" Accessories: (2) 3, 6" Extension Bars (1) Pear Head Ratchet (1) Universal Joint Blow-Molded Case

**STANLEY® 20 PIECE 3/8" DRIVE FRACTIONAL SOCKET SET – 12 POINT****Product #: 85-404**

Contents	Description
20	(9) 12 Point Standard: 3/8, 7/16, 1/2, 9/16, 5/8, 11/16, 3/4, 13/16, 7/8" (8) 12 Point Deep: 3/8, 7/16, 1/2, 9/16, 5/8, 11/16, 3/4, 13/16" Accessories: (2) 3, 6" Extension Bars (1) Pear Head Ratchet Blow-Molded Case





STANLEY® 17 PIECE 1/2" DRIVE FRACTIONAL SOCKET SET – 12 POINT

Product #: 85-425

Contents	Description
17	(14) 1/2" Drive 12 Point Standard: 3/8, 7/16, 1/2, 9/16, 5/8, 11/16, 3/4, 13/16, 7/8, 15/16, 1, 1-1/16, 1-1/8, 1-1/4" Accessories: (1) 1/2" Drive 5" Extension Bar (1) 1/2" Drive Pear Head Ratchet (1) 1/2" Drive 17" Flex Handle Blow-Molded Case



MECHANICS TOOLS

STANLEY® 26 PIECE 1/2" DRIVE FRACTIONAL SOCKET SET – 6 & 12 POINT

Product #: 85-434

Contents	Description
26	(6) 6 Point Standard: 7/16, 1/2, 9/16, 5/8, 11/16, 3/4" (7) 12 Point Standard: 13/16, 7/8, 15/16, 1, 1-1/16, 1-1/8, 1-1/4" (9) 12 Point Deep: 1/2, 9/16, 5/8, 11/16, 3/4, 13/16, 7/8, 15/16, 1" Accessories: (1) Pear Head Ratchet (1) Universal Joint (1) 17" Flex Handle Blow-Molded Case



STANLEY® BLACK CHROME LASER-ETCHED SOCKET SETS

- Black chrome finish for anti-corrosion protection and attractive appearance.
- Laser-etched markings for size visibility.
- Chrome-vanadium forged body for torque, strength and durability.
- Quick release switch and reversible mechanism for easy operation.
- Knurled handle finish for slip resistance.
- Meets or exceeds ANSI specifications.

STANLEY® 99 PIECE 1/4" & 3/8" DRIVE FRACTIONAL & METRIC BLACK CHROME SOCKET SET

Product #: 92-839

Contents	Description
99	6 Point Standard: (19) 1/4" Drive Sockets (19) 3/8" Drive Sockets 6 Point Deep: (14) 1/4" Drive 6 Point Deep Sockets (17) 3/8" Drive 6 Point Deep Sockets 8 Point Deep: (3) 3/8" Drive Deep Sockets (1) 6 Point 3/8" Drive 5/8" Spark Plug Socket (1) 1/4" Drive Pear Head Ratchet (1) 3/8" Drive Pear Head Ratchet (1) 1/4" Drive 3" Extension Bar (1) 3/8" Drive 6" Extension Bar (1) 1/4" Drive Spinner Handle (10) Combination Wrenches – SAE & metric (10) Specialty Bits (1) Bit Adapter Blow-Molded Case



STANLEY® 69 PIECE 1/4" & 3/8" DRIVE FRACTIONAL & METRIC BLACK CHROME SOCKET SET

Product #: 92-824

Contents	Description
69	(33) 3/8" Drive Sockets (30) 1/4" Drive Sockets Accessories: (1) 1/4" Drive Pear Head Ratchet (1) 3/8" Drive Pear Head Ratchet (1) 3/8" Drive 5/8" Spark Plug Socket (1) 3/8" Drive 13/16" Spark Plug Socket (1) 1/4" Drive 3" Extension Bar (1) 3/8" Drive 6" Extension Bar Blow-Molded Case





STANLEY® SOCKET SETS

- STANLEY® sockets feature the Max-Drive™ design, a unique radius corner design that provides 15% more torque,* making it easy to tighten fasteners and simplifying the turning of rounded corners.
- Max-Drive™ helps reduce fastener wear by minimizing contact on the outer 5% of the fastener, helping to increase life expectancy.*
- Max-Drive™ helps reduce slipping on frozen or rusted fasteners.
- All STANLEY® ratchets, sockets and wrenches are manufactured globally to STANLEY specifications, meeting and often exceeding ANSI specifications.

*Than standard sockets

STANLEY® 10 PIECE 1/2" DRIVE METRIC SOCKET SET – 6 POINT

Product #: 95-443

Contents	Description
10	6 Point Standard: 9, 10, 11, 12, 13, 14, 15, 17, 18, 19 mm



STANLEY® 6 PIECE 1/2" DRIVE FRACTIONAL DEEP SOCKET SET – 6 POINT

Product #: 89-618W

Contents	Description
6	6 Point Deep: 9/16, 5/8, 11/16, 3/4, 7/8, 15/16"



STANLEY® 6 PIECE 1/2" DRIVE METRIC DEEP SOCKET SET – 6 POINT

Product #: 94-966

Contents	Description
6	6 Point Deep: 12, 13, 14, 15, 17, 19 mm



STANLEY® FATMAX® OPEN MOUTH TOOL BAG

- Ideal for carrying hand tools and other medium to small size items.
- Made of durable 600 x 600 denier polyester fabric.
- Rigid, waterproof plastic bottom keeps tools dry and protected from wet surfaces.
- Reinforced handle area enables durability even with extra heavy loads.
- Central zipper allows for quick access and visibility to contents when opened.
- Multiple external pockets for organization.



Product #	# of Pockets	Height (in)	Width (in)	Overall Length (in)	Weight (lbs)
518150M	16	9-7/8	10-3/8	19-1/4	3.19

*Tools and accessories not included

STANLEY® FATMAX® TOOL VEST

- Tool compartments for easy carriage and convenient access to frequently used tools.
- Personal storage compartments for personal belongings like mobile phone, iPod, etc.
- Air mesh material enables vest to "breathe", allows air movement so draws perspiration away for comfort throughout the day.
- Multiple use compartments for all storage needs.
- Adjustable shoulder straps for maximum comfort and secure fitting.
- Light reflective strip for better visibility.



Product #	Length (in)	Height (in)	Width (in)	Weight (lbs)
FMST530201	17	3-1/2	12	2.10

STANLEY® TECHNICIAN TOOL BAG

- Made of durable 600 x 600 denier polyester fabric that is hardwearing, strong and durable.
- Multiple internal and external pockets for organization.
- Covered front pocket for secure storage of small parts.



Product #	Height (in)	Width (in)	Overall Length (in)
STST70574	9-7/8	5-1/8	11-7/8



STANLEY® FATMAX® STRUCTURAL FOAM TOOL BOXES

- Extra heavy-duty, professional tool box.
- IP53 water/dust resistance.
- Ideal for carrying power tools and hand tools.
- Ergonomic hand lifting recesses incorporated in the body for carrying heavy loads.
- Integrated V-grooves with ruler on top of lid holds materials such as lumber and pipes in place for cutting.
- Cantilever organization, Heavy-duty plastic slides with ball bearing effect (100% extension).
- Large metal rust proof latches with padlock eye.



TOOL STORAGE

Product #	Capacity (gal)	Height (in)	Width (in)	Overall Length (in)	Weight (lbs)
023001W	6	10-1/2	11-3/4	22-3/4	7.00
028001L	9	11-1/2	12-1/4	28	10.00

STANLEY® FATMAX® METAL & PLASTIC TOOL BOX

- Tough material combination and embossed logo branding - tough resin combined with metal and long-lasting branding.
- Tall tool box with a vertical storage unit for organization and easy access.
- Long metal hinge to carry the heavy loads.
- Large metal latches – heavy-duty, strong, rustproof.
- Portable tray for hand tools and small parts.
- Holes ready for inserting a lock for security of your tools.
- Integrated V-grooves on top lid for any onsite sawing and adjusting needs.
- Portable tote tray – 3/4 length design to allow storage of large tools.



Product #	# of Compartments	Capacity (gal)	Height (in)	Width (in)	Overall Length (in)	Weight (lbs)
026180R	2	10.3	11-7/16	11-1/2	26	8.80

STANLEY® SERIES 2000 TOOL BOX WITH PLASTIC LATCH

- Two lid organizers for small parts storage – accessible without opening the tool box.
- Built-in pad lock eye for small locks helps keep contents secure.
- Tote tray.
- Tools and accessories not included.



Product #	# of Compartments	Capacity (gal)	Height (in)	Width (in)	Overall Length (in)	Weight (lbs)
016011R	4	2.1	7-1/8	7-1/2	15-3/4	2.50

STANLEY® BASIC TOOL BOXES

- Polypropylene resin tool box.
- Single center latch allows for one-handed open and close.
- Small parts storage compartments on lid.



Product #	# of Compartments	Height (in)	Width (in)	Overall Length (in)	Weight (lbs)
STST16410	3	6-5/16	9-5/8	15-13/32	2.79
STST19410	3	9	10-1/4	18-7/8	5.10
STST24410	3	10-5/32	11	23-5/16	6.05

STANLEY® SERIES 2000 TOOL BOXES

- Two lid organizers for small parts storage – accessible without opening the tool box.
- Built-in pad lock eye for small locks helps keep contents secure.
- Soft, wide rubber-coated handle allows for easy and comfortable grip.
- Nickel-plated metal latches.
- Full-length tote tray.



Product #	Capacity (gal)	Height (in)	Width (in)	Overall Length (in)	Weight (lbs)
016013R	2.1	7-3/16	8-3/16	16	2.40
019151M	4.7	9-3/4	9-3/4	19	3.97
024013S	8.2	10-7/8	11-3/8	23-1/2	5.90

STANLEY® ESSENTIAL™ ROLLING WORKSHOP

- 3-in-1 - Bottom Bin, Middle Tote tray, Top Tool Box.
- 7 in. coated wheel for optimal manoeuvrability.
- Top organizers enables small parts organization.
- Geometric latch with geometric lock for added security.
- Elegant design with sturdy robust appeal.



Product #	Height (in)	Width (in)	Overall Length (in)	Weight (lbs)
STST18631	24-9/16	11-1/32	18-19/32	9.42



STANLEY® FATMAX® 4-IN-1 MOBILE WORKSTATION

- 4 storage solutions in 1; includes tool box, part bins, portable tray and oversized lower bin for larger items.
- Tiered cantilever multi-level rolling system allows easy access to all 4 storage areas at the same time.
- Durable structural foam construction.
- The unit opens up easily using a single pull-up latch.
- Telescopic handle for ergonomic hold and easy maneuvering; can be lowered for storage.
- Four side handles allow to conveniently lift up above step on onto vehicle.
- Integrated V-groove on top tool box lid.
- Tool box latches are durable, metal latches.
- Heavy-duty wheels.
- Ball bearing slides for smooth opening even with heavy loads.
- Top part has a portable tray inside for hand tools.
- Middle part for small parts has removable dividers that allow to plan interior space according to your needs.
- Bottom bin is spacious for power tools.



Product #	Capacity (gal)	Height (in)	Width (in)	Overall Length (in)	Weight (lbs)
020800R	21.6	28-7/8	13-3/4	21-5/8	23.20

STANLEY® 3-IN-1 MOBILE WORK CENTER

- 3-in-1 – Bottom bin, middle organizer, top tool box.
- Each unit functions as stand alone.
- Removable tray allows enough space for larger tools to be stored underneath.
- Removable organizer for small parts organization; Unit can be used with and without it.
- Large bottom bin for larger hand tools and power tools.
- Metal front and side latches for Heavy-duty usage - side latches can be clicked shut with or without organizer.
- Large 7" wheels for on site use.



Product #	Height (in)	Width (in)	Overall Length (in)	Weight (lbs)
STST18613	24-5/16	11-5/8	18-1/2	10.71

STANLEY® ESSENTIAL™ MOBILE CHEST

- Large capacity storage - 13 gal.
- 7 in. coated wheel and metal handle for convenient maneuverability.
- Top organizers enable small parts organization.
- Geometric latch with geometric lock for added security.
- Tool tray with handle and enabled side access for flexible storage solutions.
- New elegant design with sturdy robust appeal.



Product #	Height (in)	Width (in)	Overall Length (in)	Weight (lbs)
STST33031	13-1/2	15-7/8	26-1/8	9.76

STANLEY® 50 GALLON MOBILE TOOL CHEST

- Wide work surface on lid that includes two 2" x 4" saw grooves.
- Pull-out steel handle with soft grip for easy maneuverability.
- Large, nickel-plated metal latches.
- Lock and keys included.
- Wide, heavy-duty rubber-coated wheels.



Product #	Capacity (gal)	Height (in)	Width (in)	Overall Length (in)	Weight (lbs)
037025H	50	23-1/4	22-3/16	37-1/2	31.75

STANLEY® 24 GALLON MOBILE TOOL CHEST

- Suitable for large power tools and accessories.
- Large, heavy-duty metal latches with pad lock eyes.
- Unique tote tray sits conveniently on the pull-out steel handle, increasing the available work space.
- Tote tray includes two deep compartments with covers for smaller tools and accessories.



Product #	Capacity (gal)	Height (in)	Width (in)	Overall Length (in)	Weight (lbs)
029025R	24	19	18-1/2	30	20.25

STANLEY® PRO MOBILE TOOL CHEST WITH REMOVABLE ORGANIZER

- Removable organizer - just remove and all small parts are organized and accessible.
- One half size tray, for easy accessibility to both portable tray and bottom bin.
- V-groove on top lid for onsite sawing needs.
- Wide telescopic steel handle with rubber grip.
- Wide heavy-duty nickel-plated metal latches with padlock eye for locking.
- 7" wheel diameter.



Product #	Capacity (gal)	Height (in)	Width (in)	Overall Length (in)	Weight (lbs)
033026R	12	16-3/4	14-1/8	24	20.68

STANLEY® ESSENTIAL™ TOOLBOXES

- Top organizers enable small parts organization.
- Latch with geometric lock for smooth and easy use.
- New elegant design with sturdy robust appeal.
- Pad eye lock, enables to lock the toolbox.
- Top recesses for screws and washers.
- Tool tray with handle and enabled side access for flexible storage solutions.



Product #	Capacity (gal)	Height (in)	Width (in)	Overall Length (in)	Weight (lbs)
STST13331	0.90	5-1/8	7-3/8	12-1/2	1.30
STST16331	2.11	15-3/4	16-1/4	22-5/8	1.80
STST19331	4.25	9-3/4	9-7/8	18-7/8	2.90



STANLEY® FATMAX® PROFESSIONAL ORGANIZERS

- High-impact, break-resistant crystal-clear lid.
- Unique lid design keeps storage cups locked in place.
- Removable cups for small parts and accessories.
- Built-in wide handle for easy and stable portability.
- Wide side latches for secure stacking - up to 3 together.
- Front anti-rust metal latches.
- Metal hinges.
- All round water seal for ultimate protection.



Product #	# of Compartments	Capacity (gal)	Height (in)	Width (in)	Overall Length (in)	Weight (lbs)
FMST14820	10	17.60	14	4-1/2	17-1/2	4.85
FMST14920	10	12.11	14	2-7/8	17-1/2	3.89
014461M	14	8.19	4-21/64	16-31/32	19-3/8	5.80

STANLEY® DEEP PROFESSIONAL ORGANIZER - 10 COMPARTMENT

- High-impact, break-resistant, crystal-clear lid.
- Unique lid design keeps storage cups locked in place.
- Removable cup compartments in different sizes.
- Large, deep cups for easy access to small items.
- Extra-wide handle designed for gloved hands.



Product #	# of Compartments	Height (in)	Width (in)	Overall Length (in)	Weight (lbs)
014710R	10	13-1/8	4-1/16	16-5/8	3.68

STANLEY® PROFESSIONAL ORGANIZER - 25 COMPARTMENT

- High-impact, break-resistant crystal-clear lid.
- Unique lid design keeps storage cups locked in place.
- Removable cup compartments in 3 different sizes.
- Extra-wide handle designed for gloved hands.



Product #	# of Compartments	Height (in)	Width (in)	Overall Length (in)	Weight (lbs)
014725R	25	2-1/8	13-1/8	16-9/16	2.96

STANLEY® SORTMASTER™ ORGANIZER

- Side latches lock single organizer and allows secured stacking of multiple organizers and allows transport of 2 units at once.
- Removable dividers provide high customization for small parts and larger hand tools.
- Unique 90 degree angle design allows storage of hammers and angled tools.
- Special lid structure –lid interlocking with dividers to prevents movement of small parts from one compartment to another.



Product #	# of Compartments	Height (in)	Width (in)	Overall Length (in)	Weight (lbs)
STST14027	17	3-7/16	12-63/64	16-15/16	2.57

STANLEY® SORTMASTER™ JUNIOR

- Innovative benefits such as locking latches allow secured stacking and transport of up to 3 at once.
- Movable dividers provide high customization for small parts and larger hand tools; 512 configurations possible.
- Unique 90° angle in the main compartment design allows storage of hammers and angled tools or measuring tapes comfortably with the small parts in the other nearby compartments.
- Special lid structure – upper lid interlocks with dividers to prevent movement of small parts from one compartment to another.



Product #	# of Compartments	Height (in)	Width (in)	Overall Length (in)	Weight (lbs)
STST14022	14	2-5/8	11-3/8	14-5/8	1.82

STANLEY® SORTMASTER™ LIGHT

- Innovation in a basic organizer locking latches and carriage of up to 3 at once.
- Added value of 3 in 1. Single organizer allows secured stacking and transport of up to 3 at once.
- Removable dividers provide high customization for small parts and larger hand tools.
- Special lid structure prevents movement of small parts from one compartment to another.
- Convenient ergonomic carriage of tools with additional latch enables back-to-back stacking.



Product #	# of Compartments	Height (in)	Width (in)	Overall Length (in)	Weight (lbs)
STST14021	10	2-13/16	8-5/8	11-5/8	0.83

STANLEY® 3-IN-1 TOOL ORGANIZER

- Organize hand tools, power tools and accessories.
- Innovative design allows simultaneous access to all 3 storage bins.
- Ability to be used as work station.
- Built-in carrying handle.



Product #	Height (in)	Width (in)	Overall Length (in)	Weight (lbs)
STST17700	12	9	16	5.89



STANLEY® ESSENTIAL™ METAL SAWHORSE

- The upper metal bar enables various clamping applications.
- Anti-slip rubber pads create friction on the surface while cutting.
- Folding legs enable quick setup and breakdown.
- Side latches hold two single units together for easy carrying and compact storage.



Product #	Weight Capacity	Height (in)	Width (in)	Overall Length (in)	Weight (lbs)
STST11154	750 lbs per pair	29	3-5/16	31-7/8	5.78

STANLEY® FATMAX® ADJUSTABLE LEG SAWHORSE (SINGLE)

- Each leg adjusts separately, allowing the sawhorse to stand on uneven surfaces.
- Rubber inserts for stability.
- High quality, sturdy polypropylene and aluminum legs.
- Unique slide mechanism, providing for easy, smooth adjustment.



Product #	Weight Capacity	Height (in)	Width (in)	Overall Length (in)	Weight (lbs)
0110315	2500 lbs per pair	32 - 39	2-1/8	27-3/16	10.99

STANLEY® ADJUSTABLE SAWHORSE TWIN PACK

- Sawhorse width and height are adjustable for flexibility.
- Rubber feet and top tray for slip resistance.



Product #	Weight Capacity	Height (in)	Width (in)	Overall Length (in)
STST60626	1000 lbs per pair (800 lbs when width is extended)	31-1/8	2-7/8	28-1/8

STANLEY® FOLD-UP SAWHORSE (SINGLE)

- Galvanized metal and polypropylene construction for lightweight durability.
- Integrated handle or shoulder strap for easy transport – side latches hold two single units together for storage/portability.
- Folding metal legs with locking mechanism for easy setup and safe transportation.
- Rubber leg tips to help prevent movement.
- Designed with working height in mind for comfort.



Product #	Weight Capacity	Height (in)	Width (in)	Overall Length (in)	Weight (lbs)
STST11151	800 lbs per pair	5	4	40	9.34

STANLEY® FOLDING SAWHORSE TWIN PACK

- Comfortable work height.
- Multipurpose side hangers for storage of accessories.
- Strong tray connection helps keep sawhorse from collapsing unexpectedly under heavy load.
- Two built-in V-grooves hold materials such as lumber and pipes in place for cutting.
- Rubber points line top of ruler for load stability.



Product #	Weight Capacity	Height (in)	Width (in)	Overall Length (in)	Weight (lbs)
060864R	1000 lbs per pair	31	2-1/8	26-7/8	12.78

STANLEY® JUNIOR FOLDING SAWHORSE TWIN PACK

- Light weight and easy to transport.
- Integrated V-groove hold materials in place while cutting.
- Bottom tray for storage while in use.



Product #	Weight Capacity	Height (in)	Width (in)	Overall Length (in)	Weight (lbs)
STST60952	800 lbs per pair	32	5	22-1/2	11.02